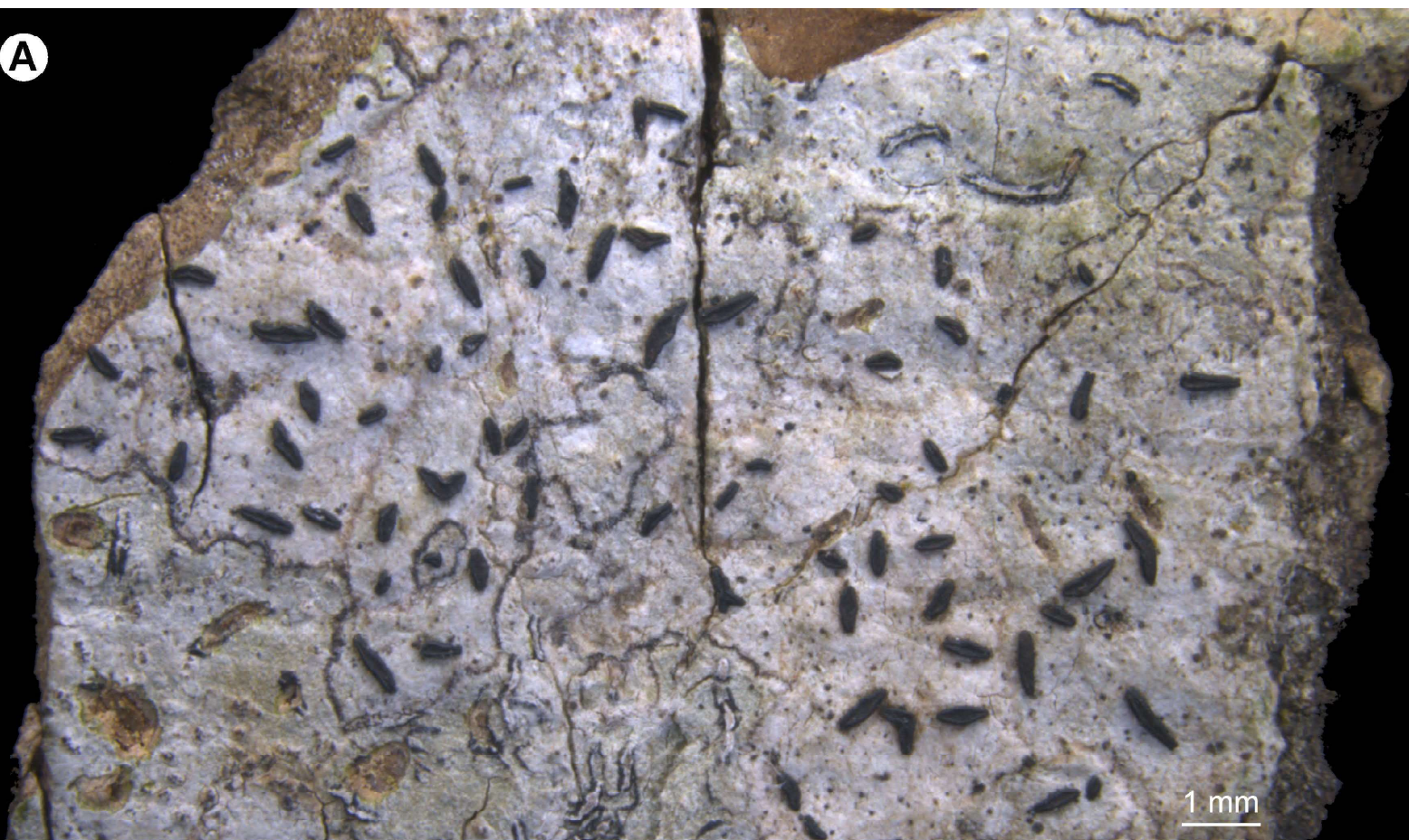


A

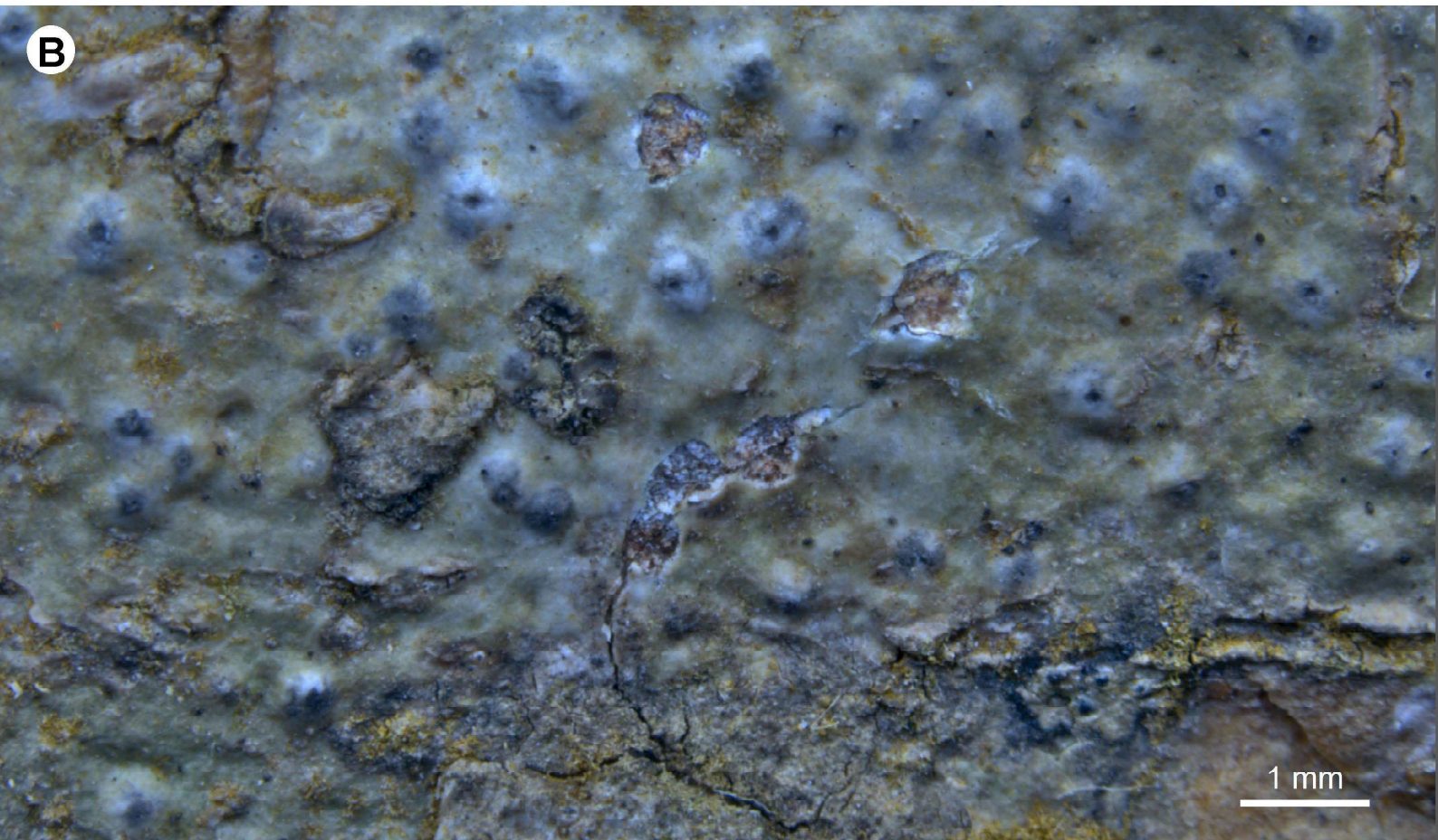


1 mm

***Alyxoria varia* (Pers.) Ertz & Tehler 2011**

Lirelas com lábios abertos e discos expostos. @Aido

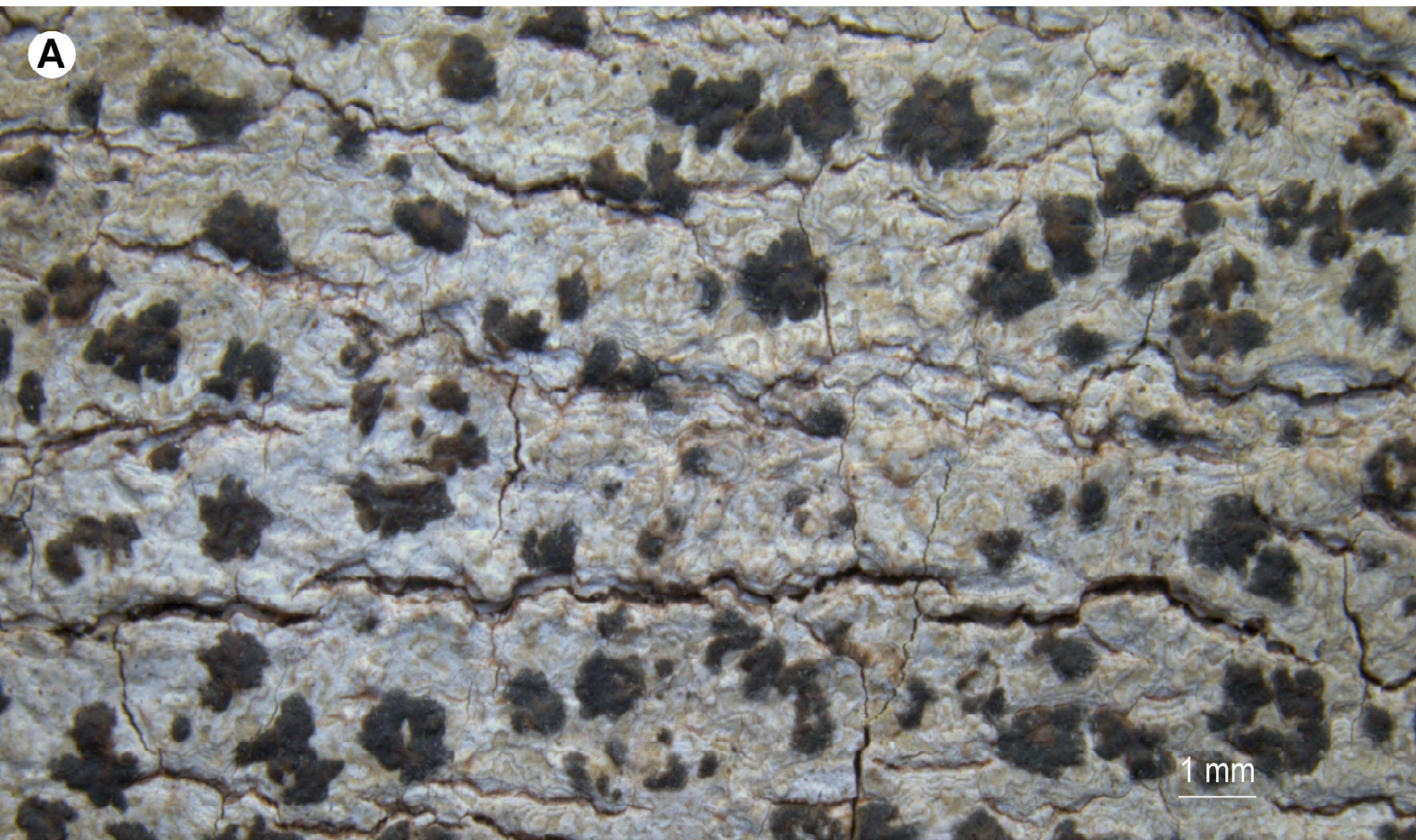
B



1 mm

***Anisomeridium bifforme* (Schaer.) R.C. Harris 1978**

Talo corticado e peritécios com ostíolo apical. @Aido

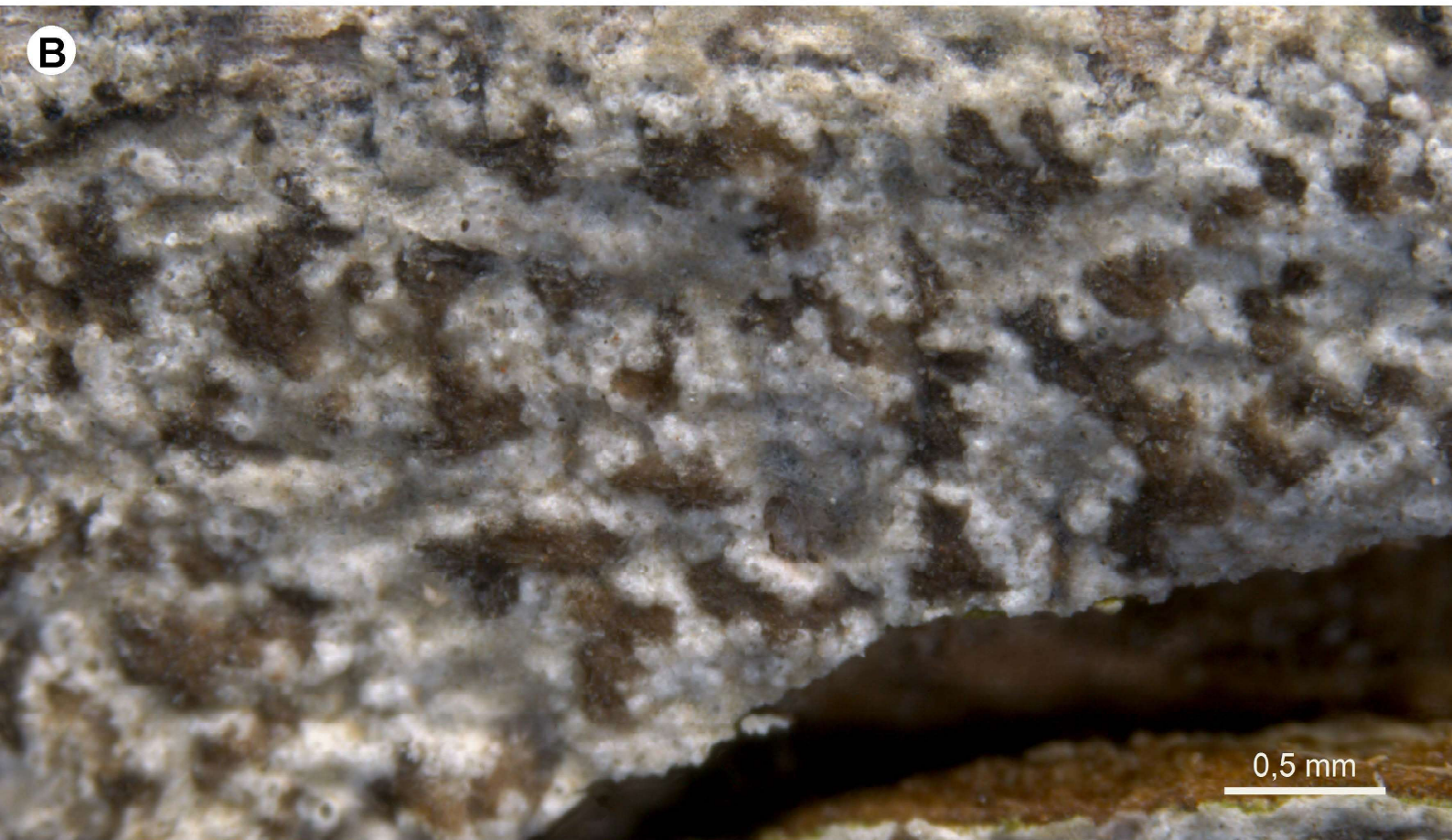


A

1 mm

***Arthonia complanata* Fée 1825**

Ascoma como pontos negros e irregulares. @Aido



B

0,5 mm

***Arthonia parantillarum* Aptroot 2003**

Ascomas como pontos marrons, planos e rentes ao talo @Aido



Astrothelium stromatofluorescens Aptroot & M. Cáceres 2016

Peritécios em pseudo-estromas. @Aido



Athallia holocarpa (Hoffm.) Arup, Frödén & Söchting 2013

Apotécios alaranjados com discos mais escuros que as margens @Aido

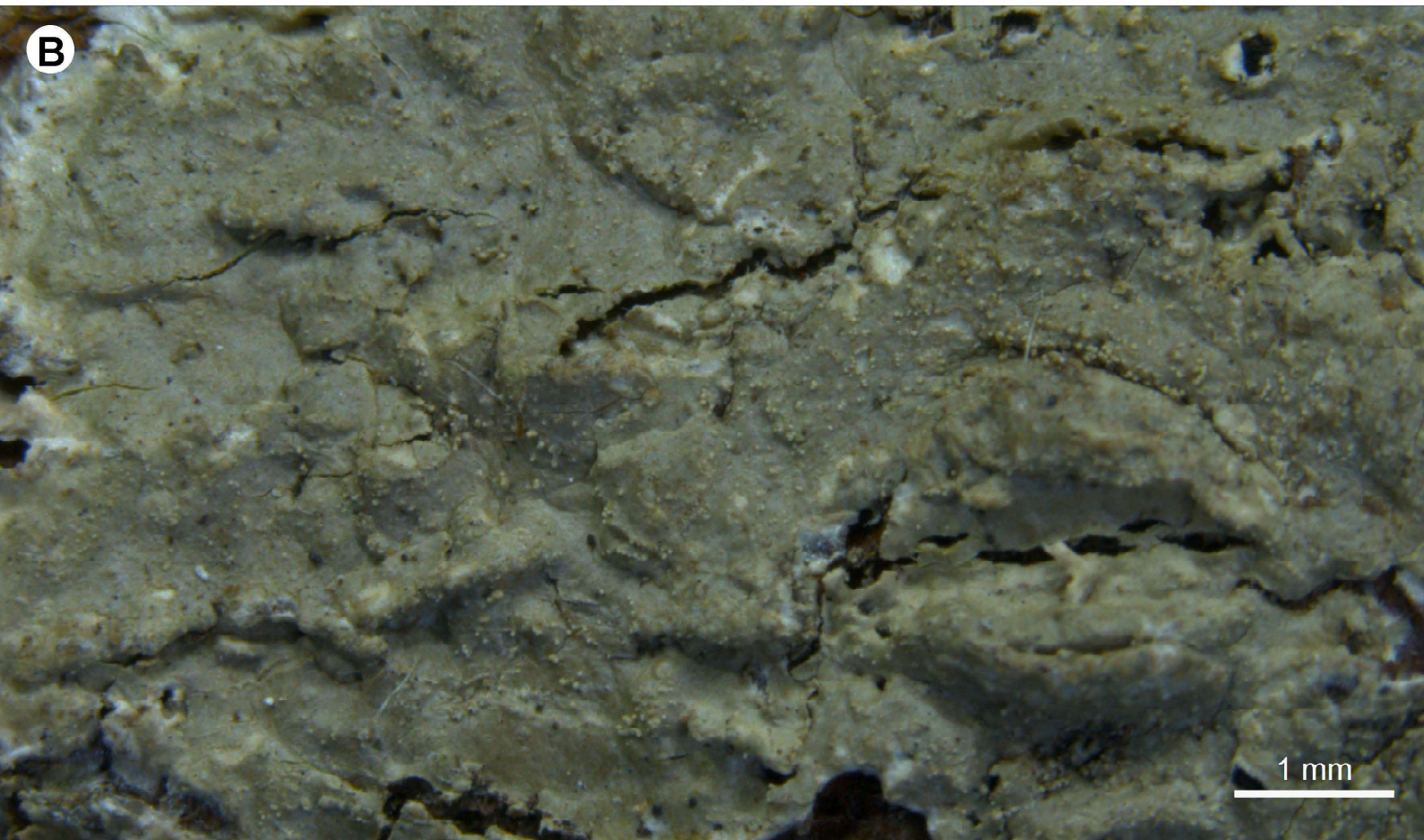


A

1 mm

Bacidina medialis (Tuck ex Nyl.) Kistenich, Timdal, Bendiksby & S. Ekman 2018

Apotécio marrom-pálido com margem indistinta. @Aido

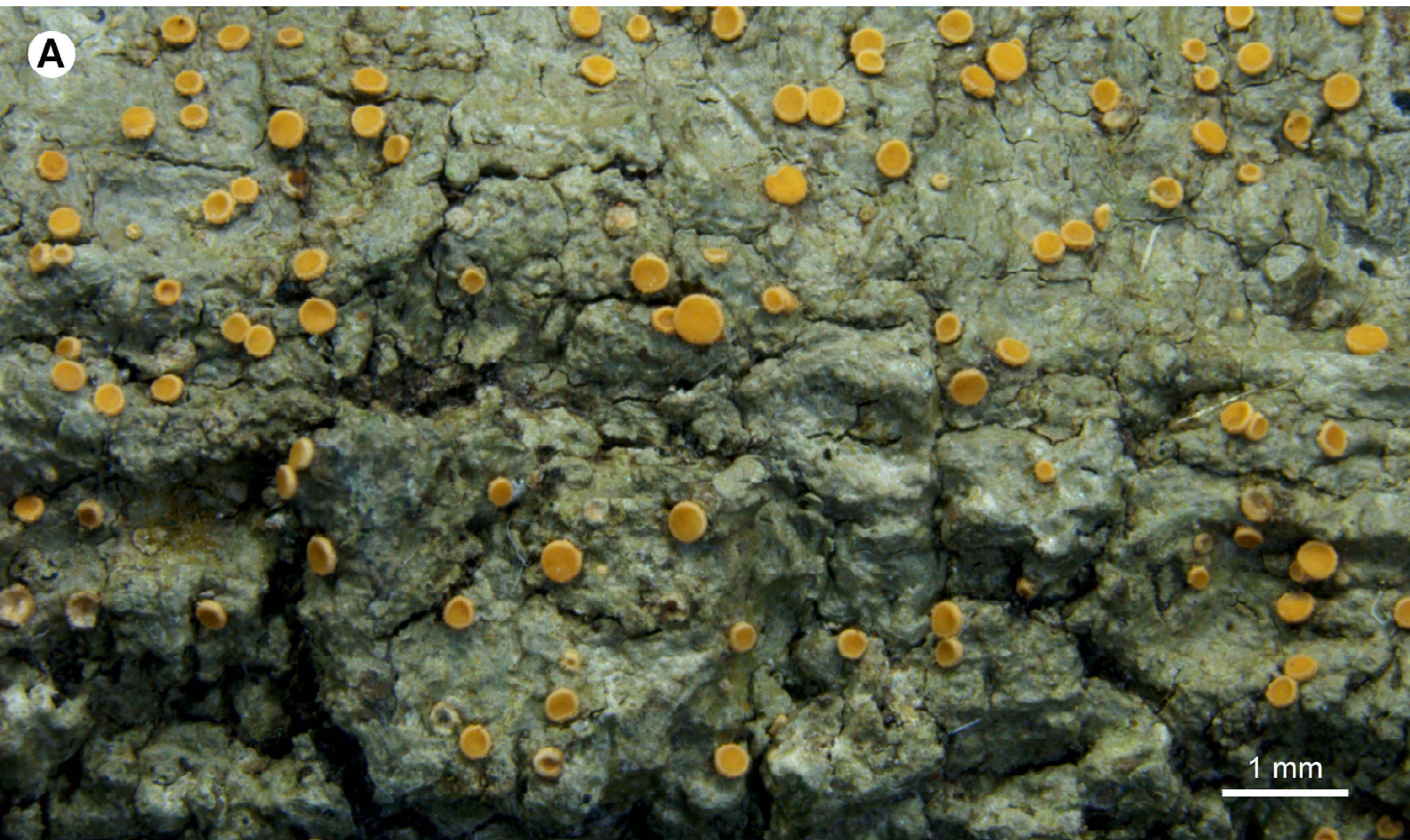


B

1 mm

Coenogonium cf. *isidiosum* (Breuss) Rivas Plata, Lücking, L. Umaña & Chaves 2006

Talo corticado, verde-oliva e com apenas isídios presentes. @Aido



***Coenogonium pyrophthalmum* (Mont.) Lücking, Aptroot & Sipman 2006**

Talo verde-oliva e com discos alaranjados. @Aido



***Coenogonium upretianum* M. Cáceres & Aptroot 2018**

Apotécio alaranjado (talo danificado). @Aido



1 mm

***Coniocarpon cinnabarinum* DC. 1805**
Ascoma irregular e coberto por pruínas brancas e vermelhas. @Aido



1 mm

***Cryphonia submuriformis* M. Cáceres & Aptroot 2013**
Ascoma branco, irregular plano e rente ao talo. @Aido



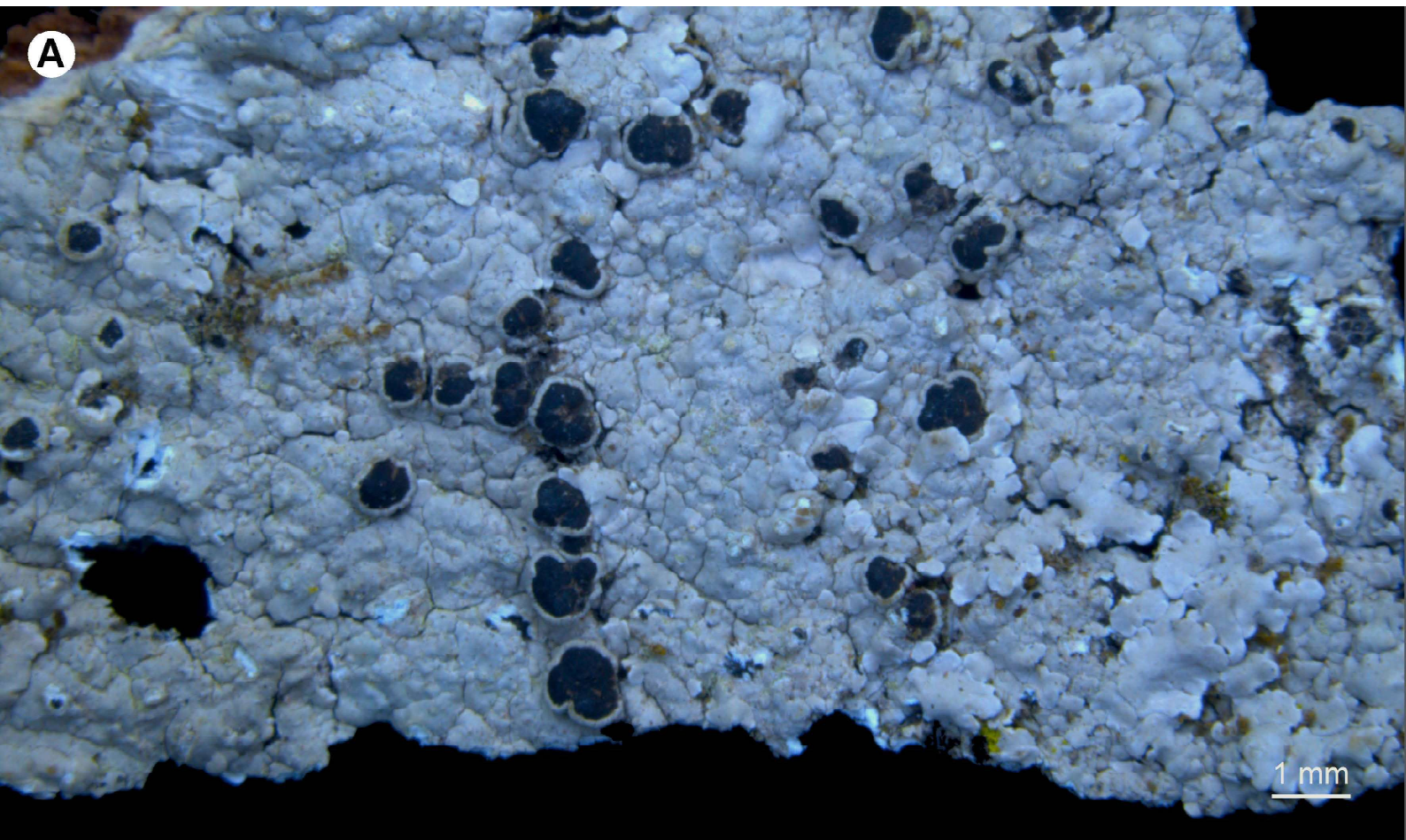
***Diorygma circumfusum* (Stirt.) Kalb, Staiger & Elix 2004**

Talo esbranquiçado e inconspícuo. @Aido



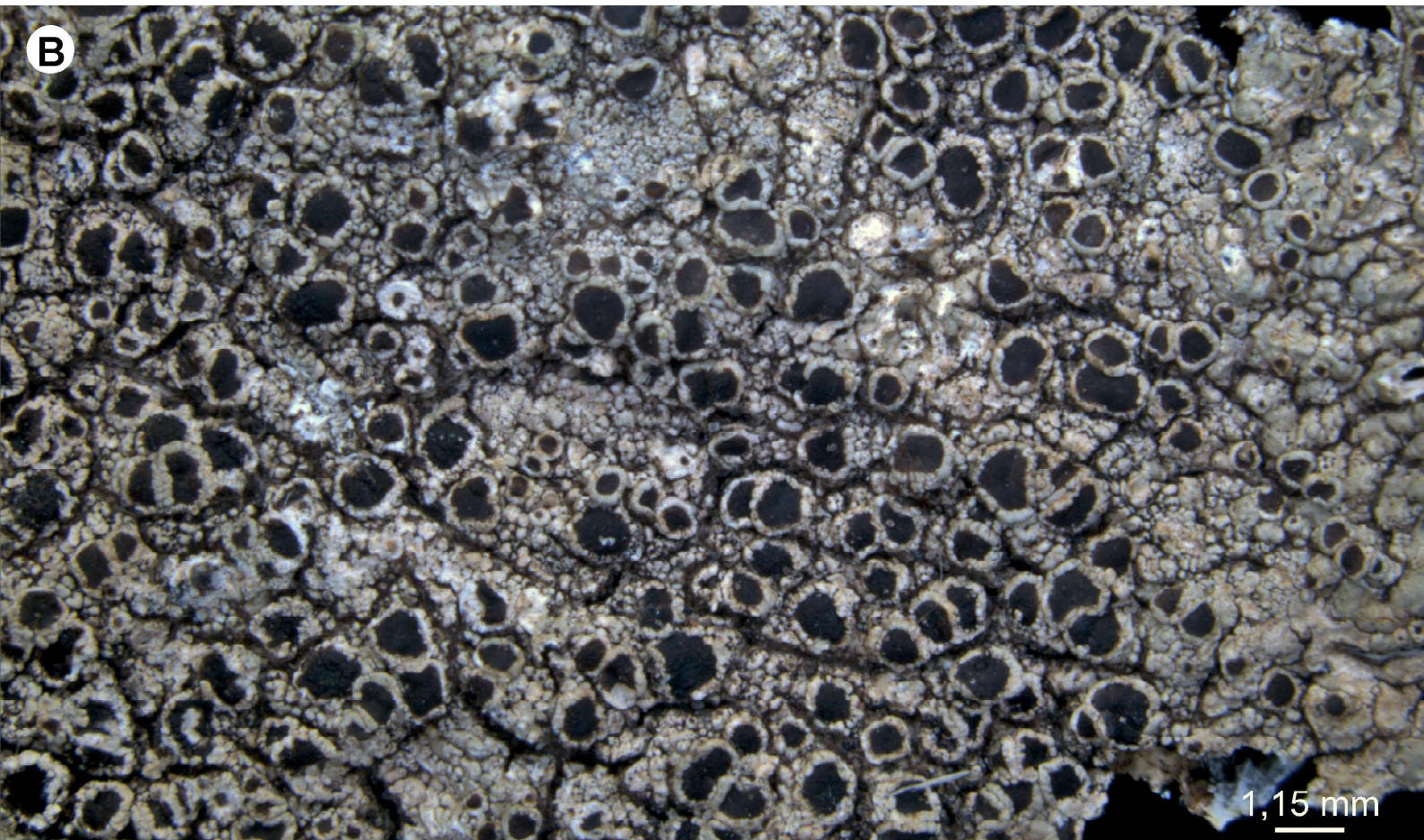
***Diorygma hieroglyphicum* (Pers.) Staiger & Kalb 2004**

Lirelas com disco exposto e fendas que interrompem o talo no entorno das lirelas. @Aido



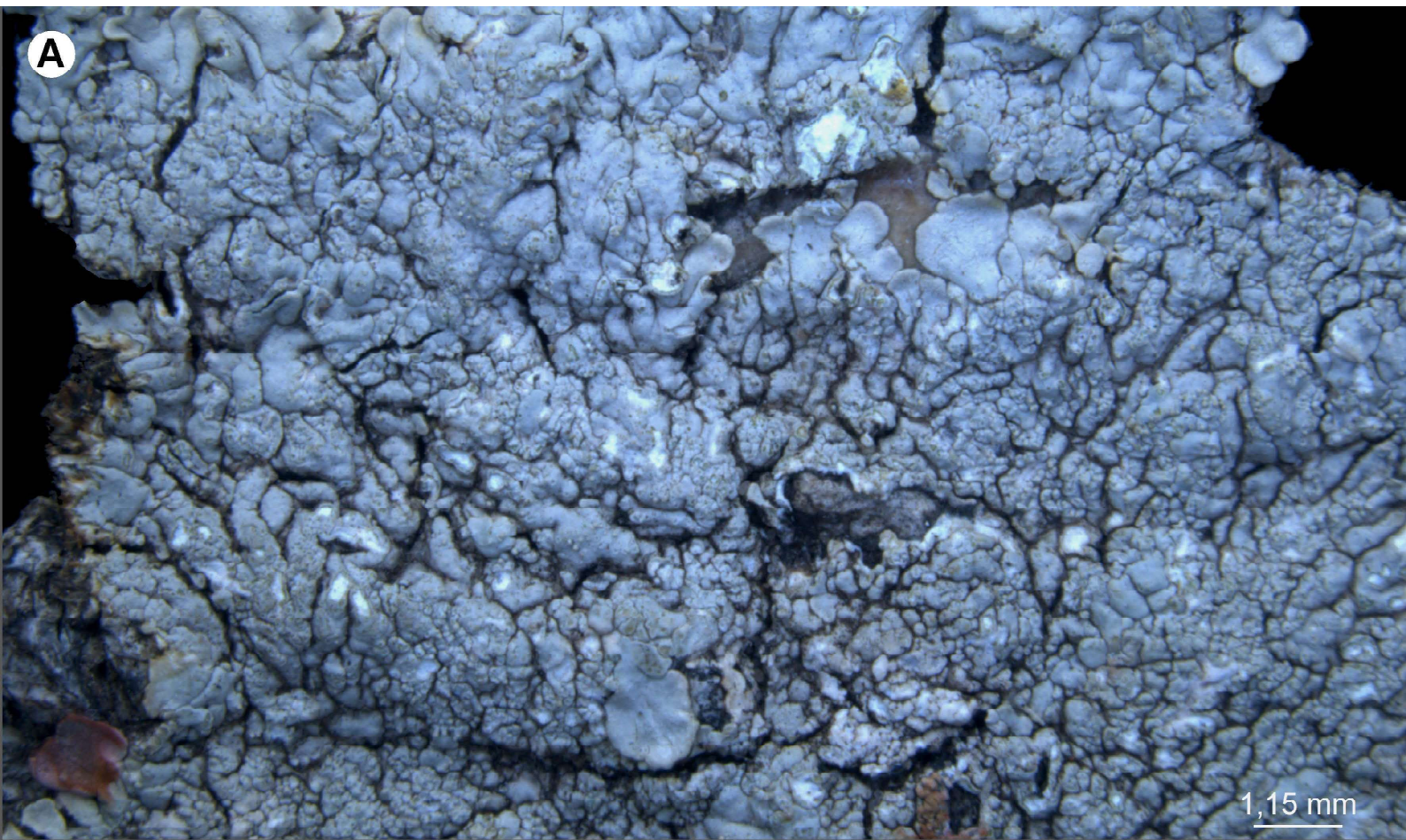
***Dirinaria applanata* (Fée) D.D. Awasthi 1970**

Apotécios com disco negro e margem da mesma cor do talo; Sorédios em pústulas. @Aido



***Dirinaria confluens* (Fr.) D.D. Awasthi 1975**

Apotécios com disco negro e marfim da mesma cor do talo. @Aido



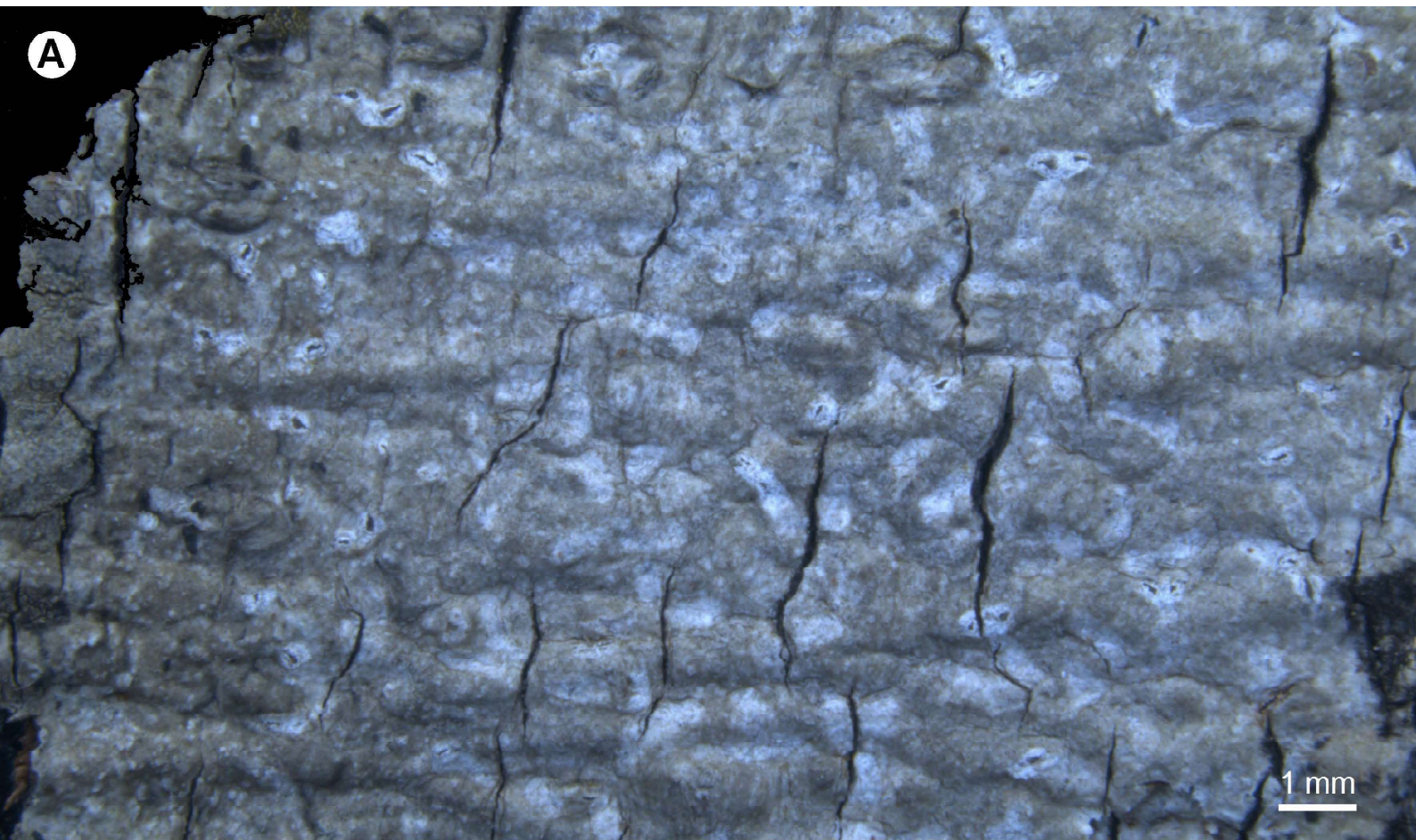
***Dirinaria papillulifera* (Nyl.) D.D. Awasthi 1964**

Talo com isídios bacilares e apotécio nao visto. @Aido



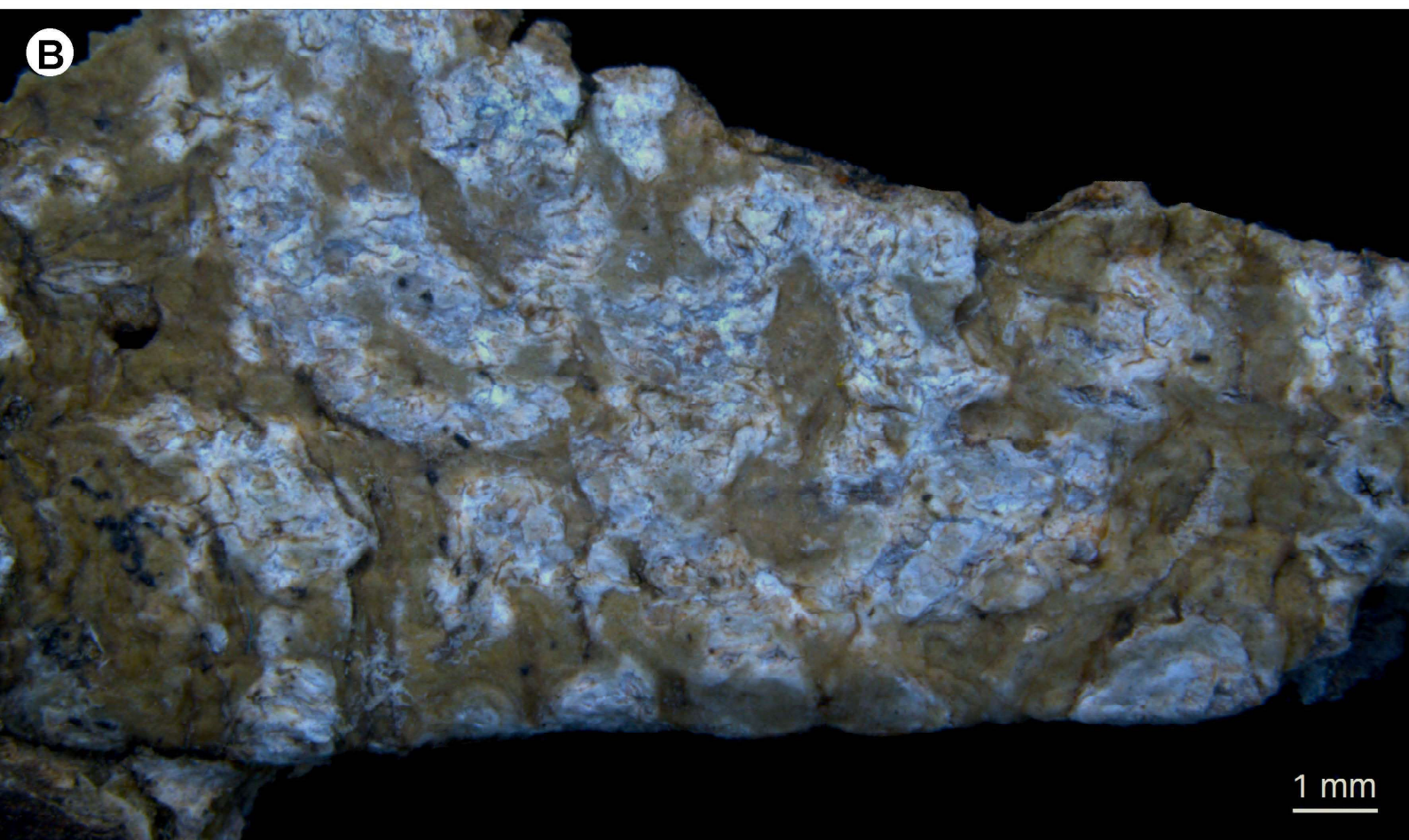
***Fissurina amyloidea* M. Cáceres, Aptroot & Lücking 2014**

Lirelas com disco exposto, lábios esbranquiçados e com uma fina camada do talo. @Aido



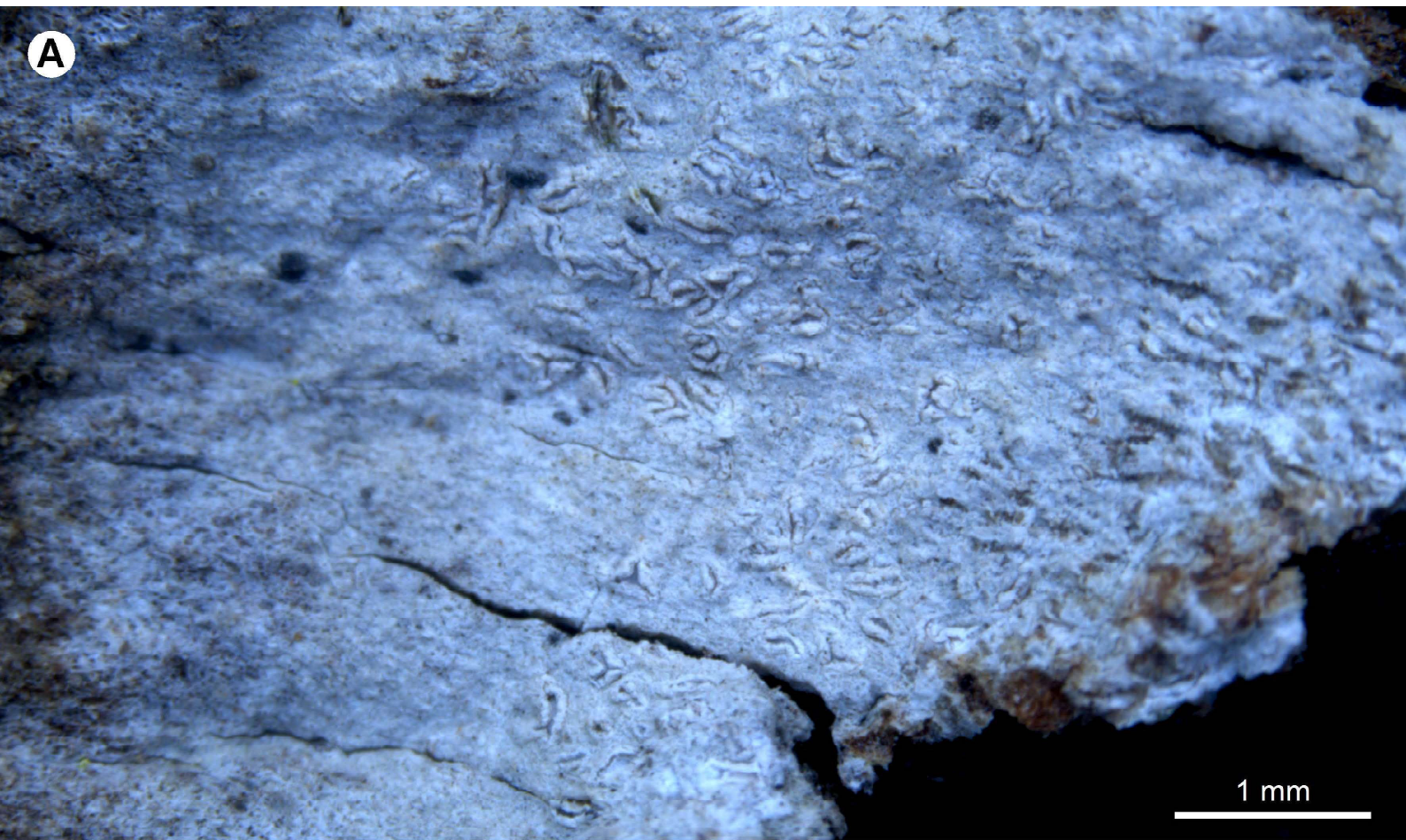
***Fissurina crystallifera* Merc.-Díaz, Lücking & Parnmen 2014**

Lirelas com disco majoritariamente fechado. @Aido



***Fissurina mexicana* Lücking & Rivas Plata 2011**

Talo verde-oliva e lirelas imersas em pseudo-estromas. @Aido



A

1 mm

***Fissurina varieseptata* Common & Lücking 2011**

Lirelas ramificadas, disco exposto e com margem talina. @Aido

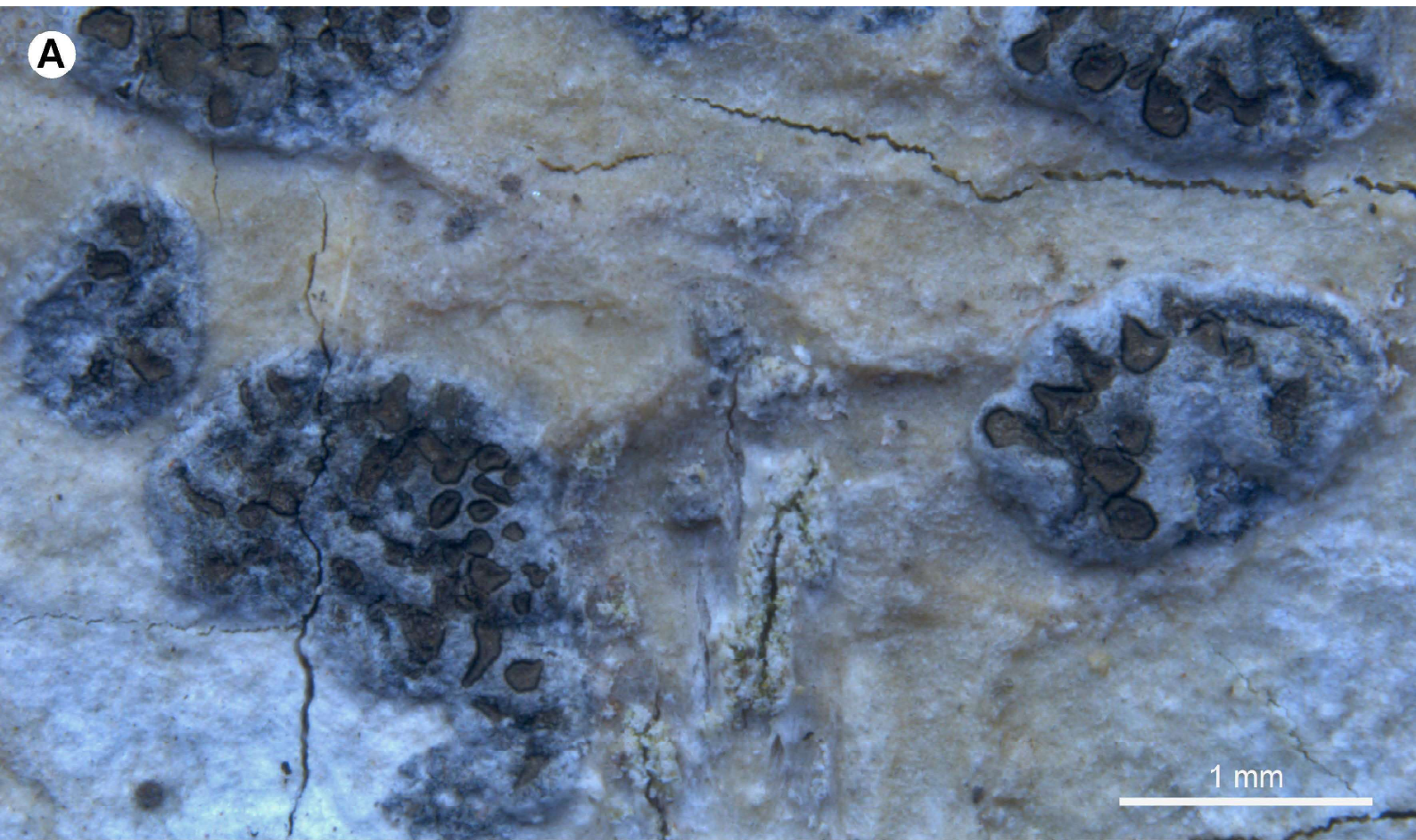


B

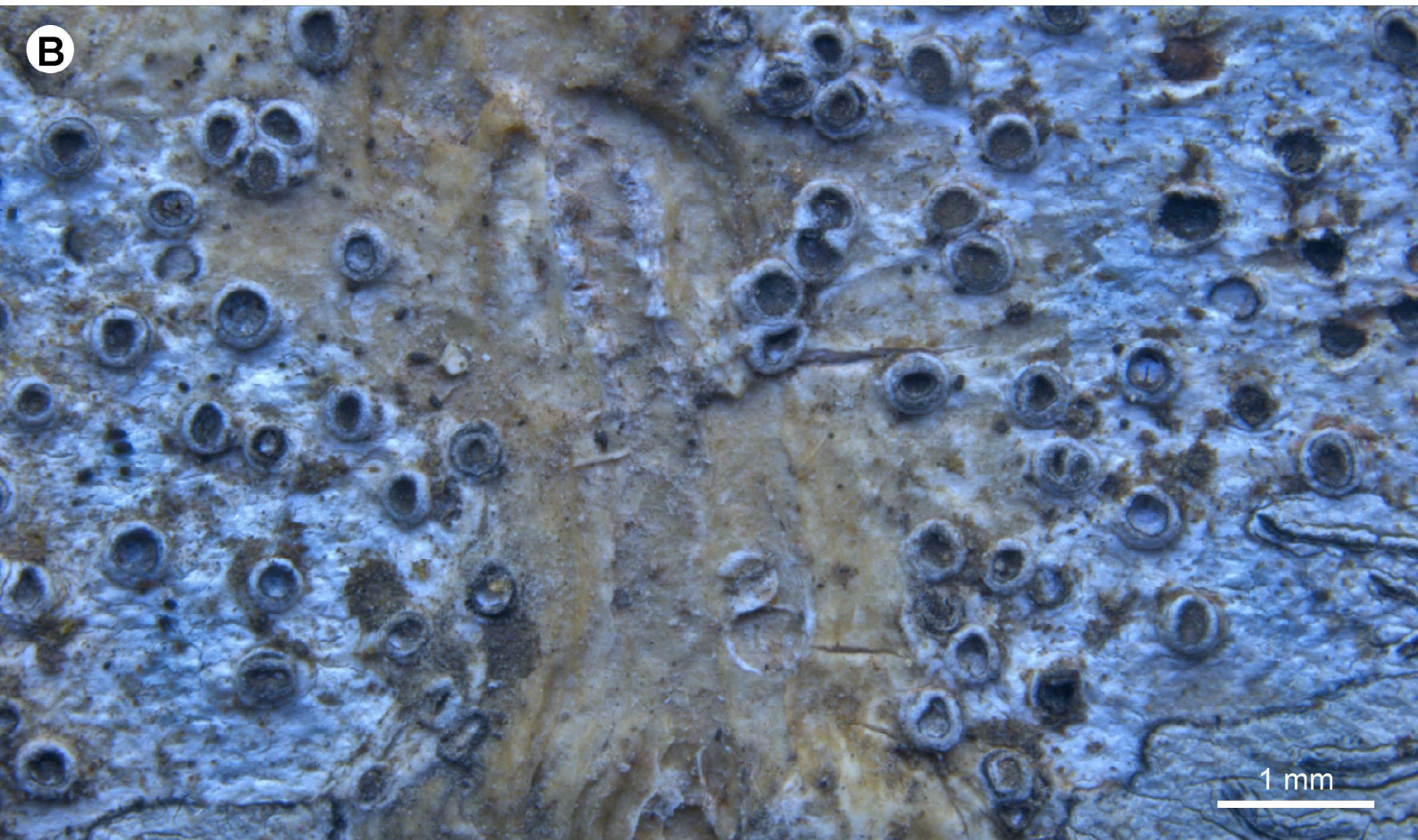
0,5 mm

***Flakea papillata* O.E. Erikss. 1992**

Talo esquamuloso, verde e com papilas na superfície superior. @Aido



***Glyphis cicatricosa* Ach. 1814**
Lirelas com discos marrons e em pseudo-estromas. @Aido



***Glyphis scyphulifera* (Ach.) Staiger 2002**
Lirelas circulares e com discos marrons. @Aido



A

1 mm

***Graphis caesiella* Vain. 1890**
Lirelas ramificadas, discos fechados e com pruina branca presente. @Aido



B

1 mm

***Graphis cincta* (Pers.) Aptroot 2009**
Lirelas erumpentes, com margem talina, disco fechado e sem pruina. @Aido



***Graphis crebra* Vain. 1899**

Lirelas erumpentes, com margem talina e disco exposto. @Aido



***Graphis furcata* Fée 1825**

Lirelas erumpentes e discos fechados. @Aido



A

1 mm

***Graphis handelii* Zahlbr. 1930**
Lirelas erumpentes, om margem talina, disco exposto e não pruinoso. @Aido



B

1 mm

***Graphis librata* C. Knight 1884**
Lirelas curtas e ramificadas, com margem talina e discos fechados. @Aido



***Graphis lineola* Ach. 1810**

Lirelas eumyces, sem pruina e discos fechados. @Aido



***Graphis pinicola* Zahlbr. 1930**

Lirelas erumpentes, com margem talina e discos fechados. @Aido



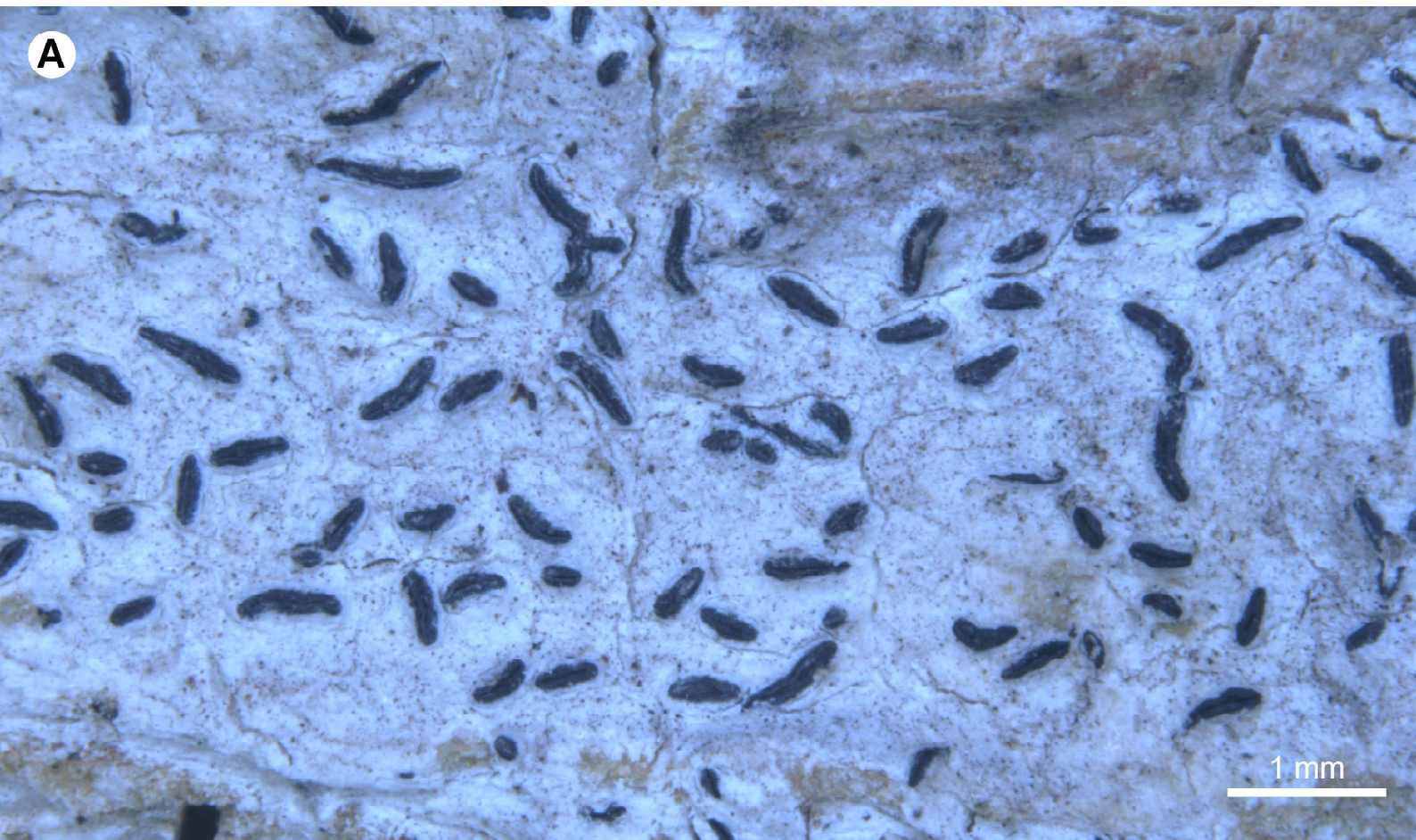
***Graphis plumierae* Vain. 1915**

Lirelas imersas, com margem talina, disco fechado e lábios com pruína branca. @Aido

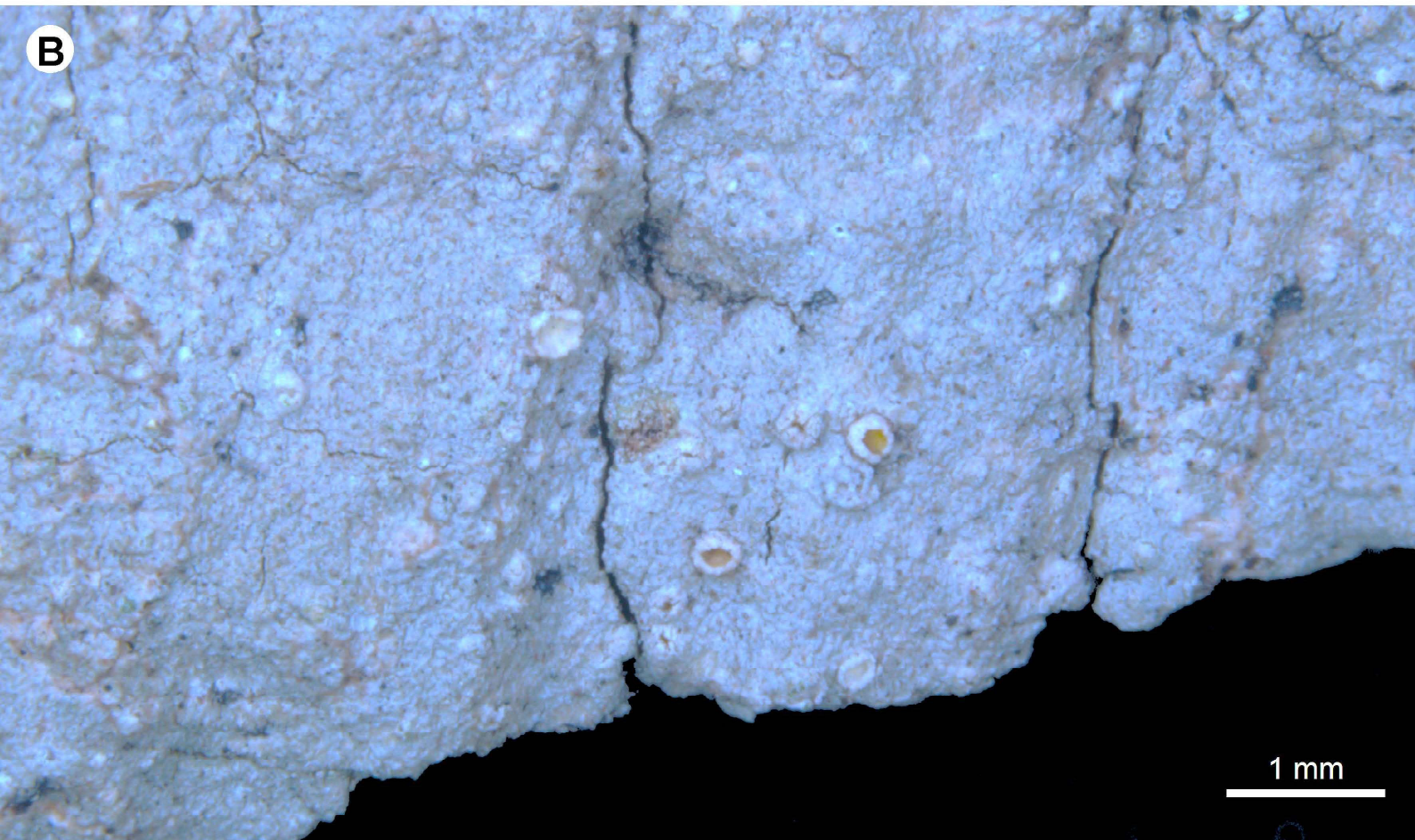


***Graphis pyrrocheiloides* Zahlbr. 1923**

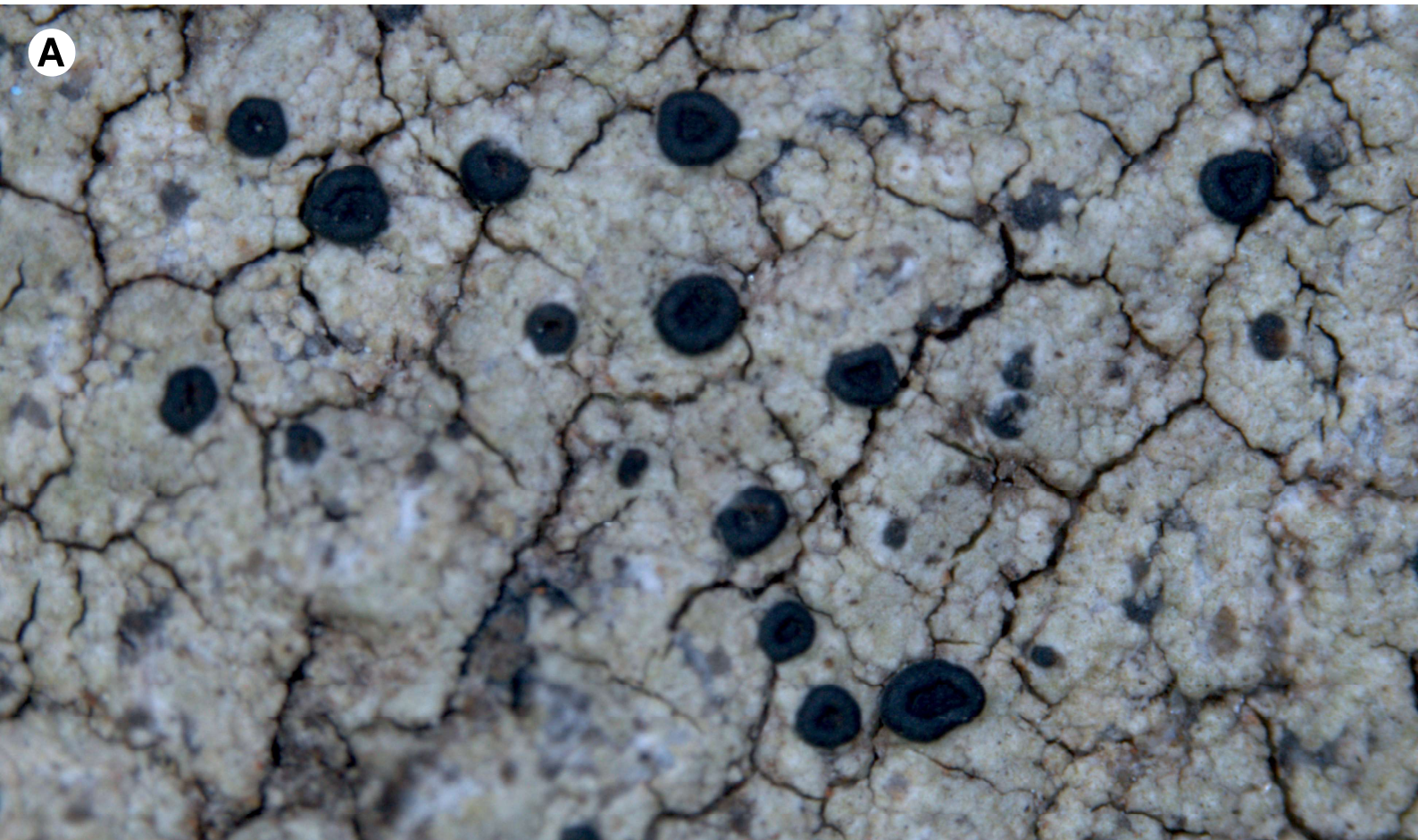
Lirelas com discos expostos e pruinosos. @Aido



***Graphis submarginata* Lücking 2008**
Lirelas erumpentes, com margem talina e discos expostos. @Aido

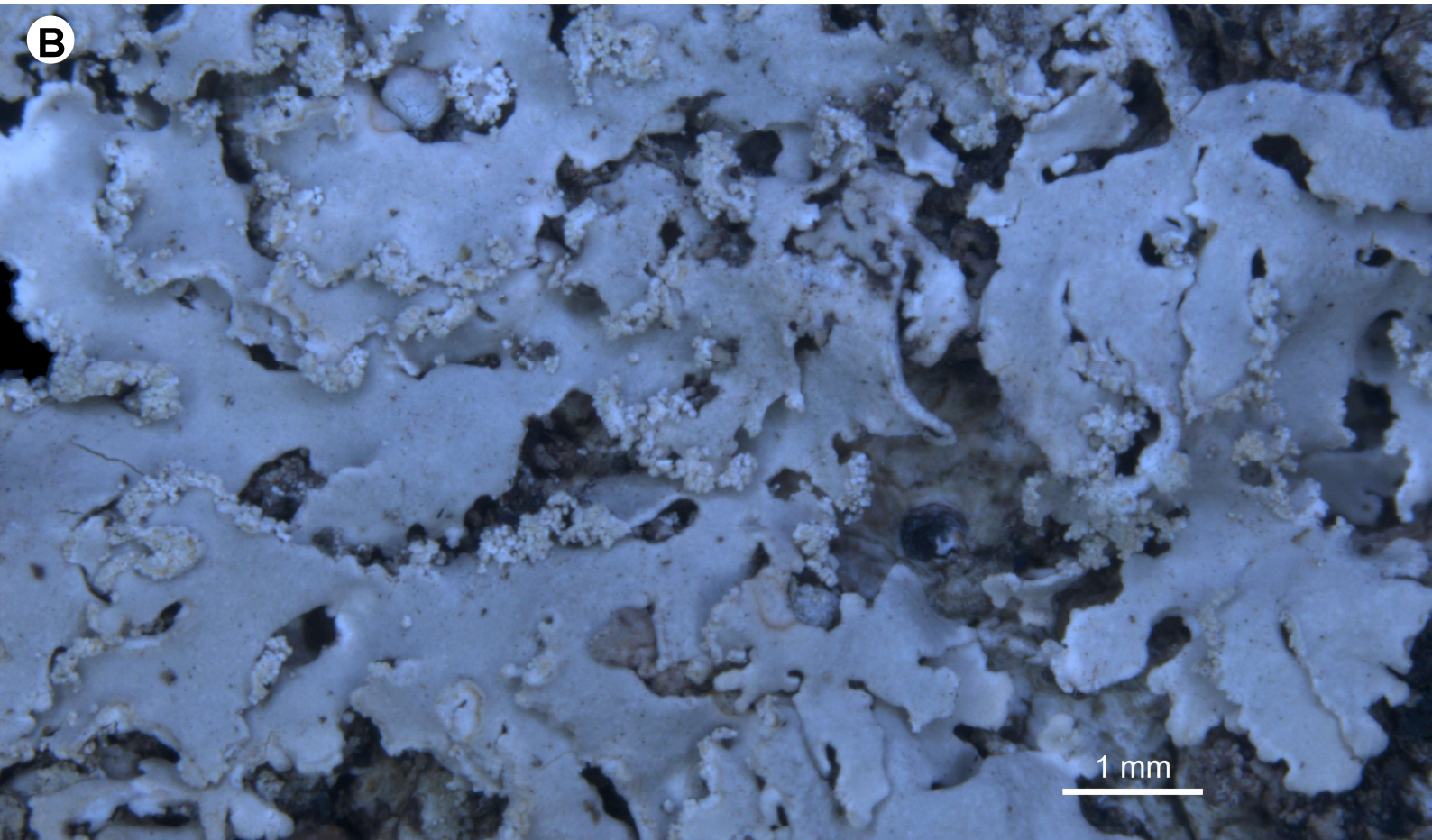


***Gyalecta nana* Tuck. 1862**
Apotécios sésseis, margem da mesma cor do talo e disco alaranjado. @Aido



A

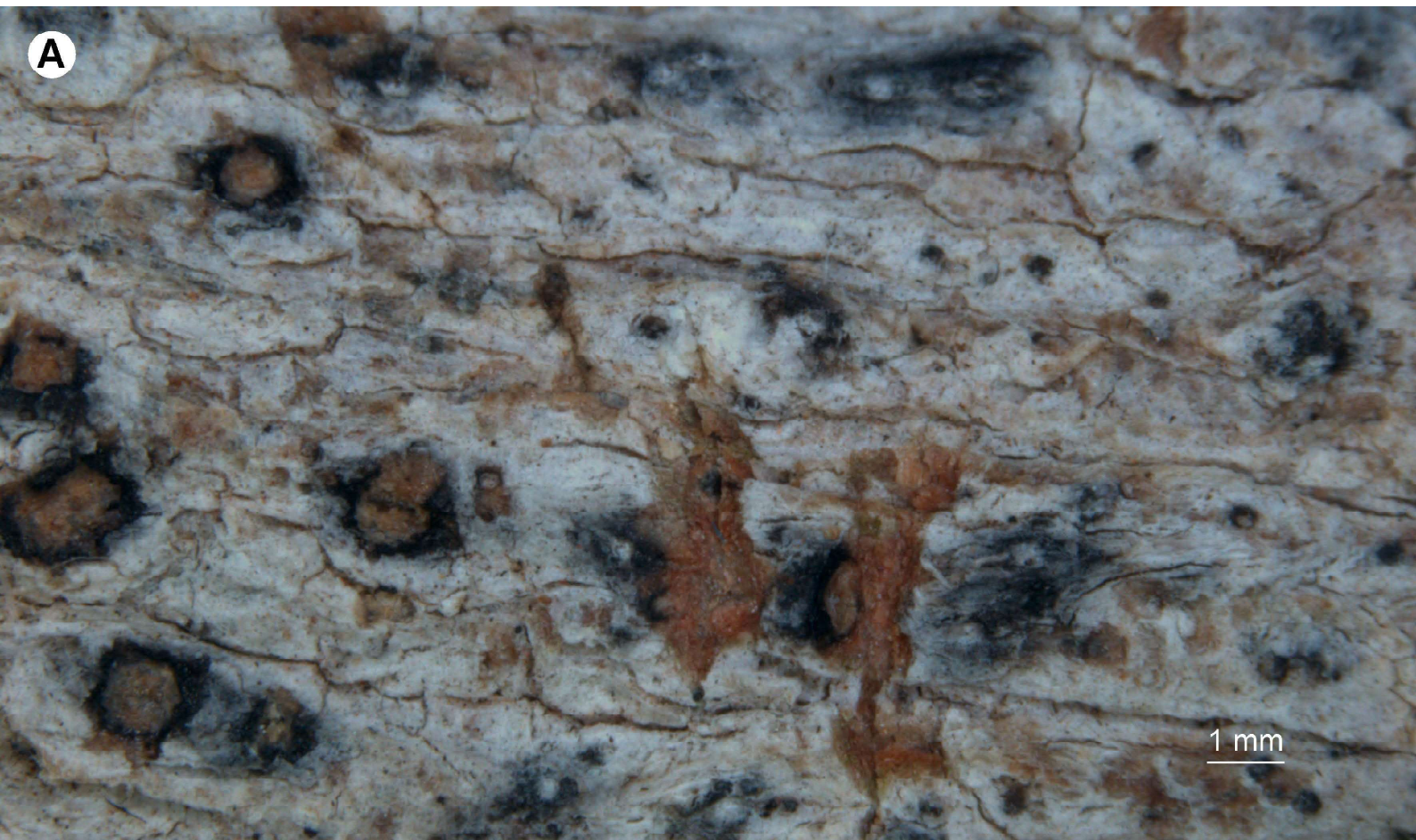
***Buellia curatellae* (Malme) Malme 1927**
Apotéio presente, sésseis disco e margem negros. @Aido



B

1 mm

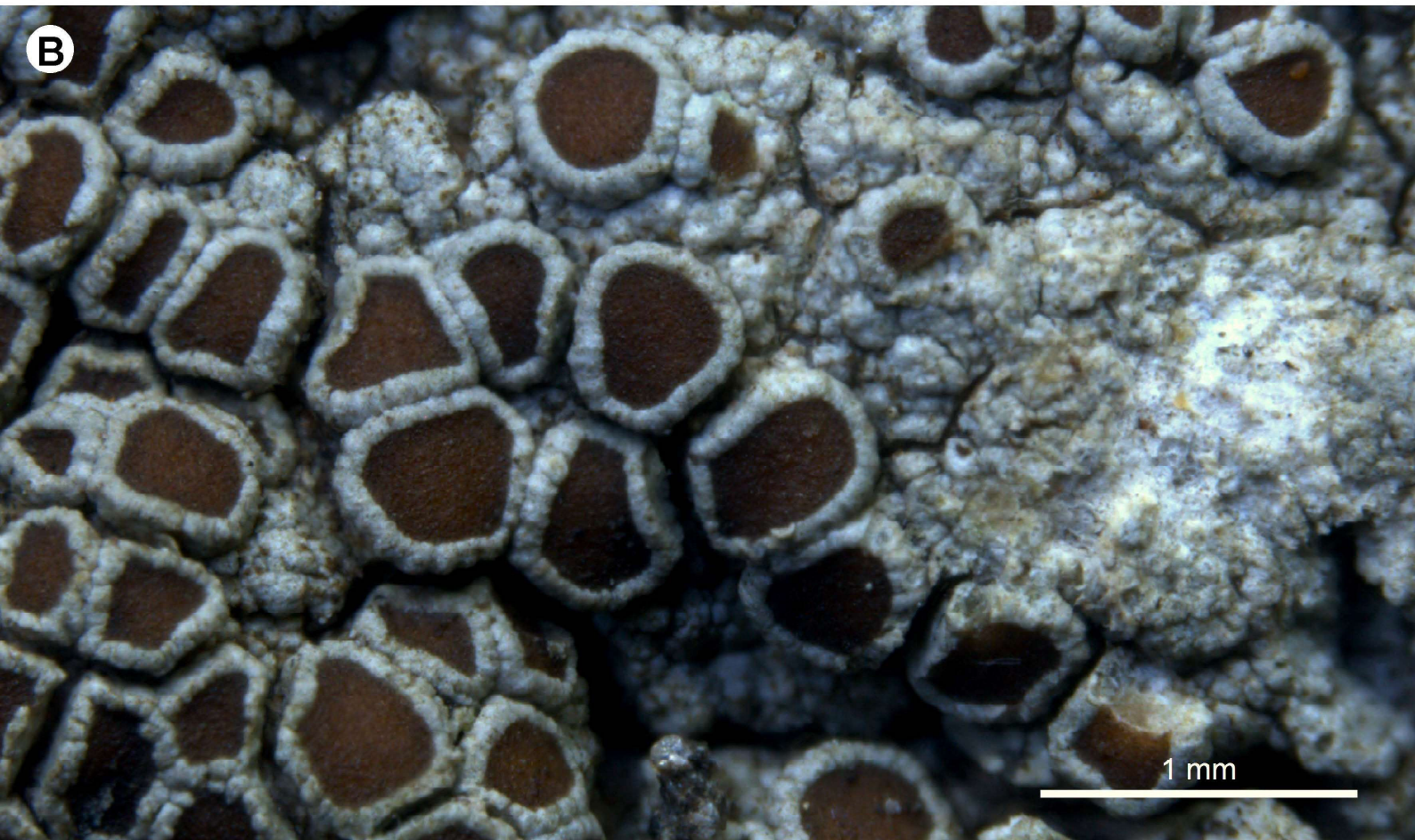
***Heterodermia albicans* (Pers.) Swinscow & Krog 1976**
Talo folioso e com sorédiso laminais. @Aido



A

1 mm

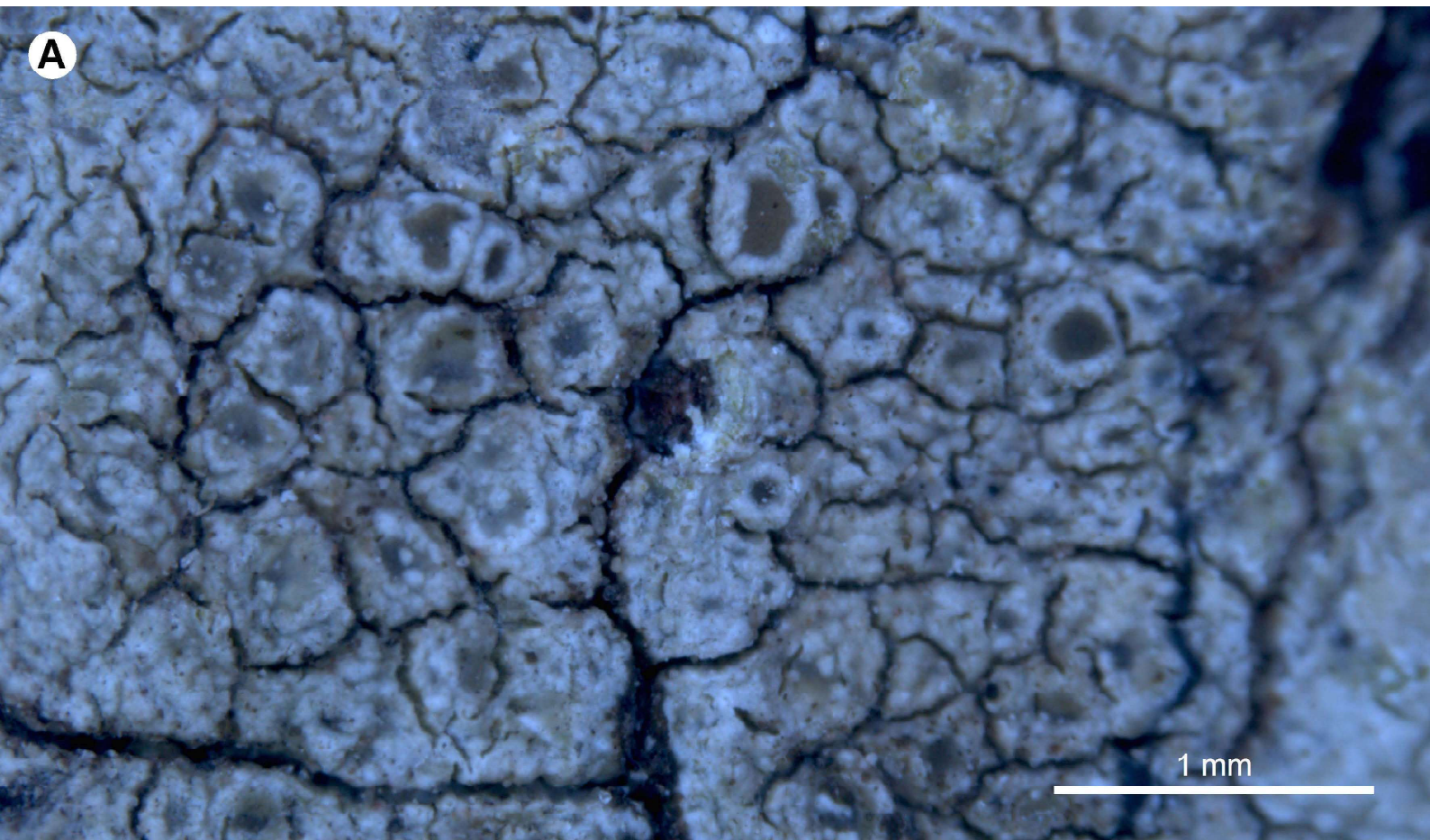
Julella vitrispora (Cooke & Harkn.) M.E. Barr 1986
Peritécios imersos, ostíolos apicais e brancos. @Aido



B

1 mm

Lecanora argentata (Ach.) Röhl. 1813
Apotécios sésseis, discos marrons e margens da mesma cor do talo. @Aido

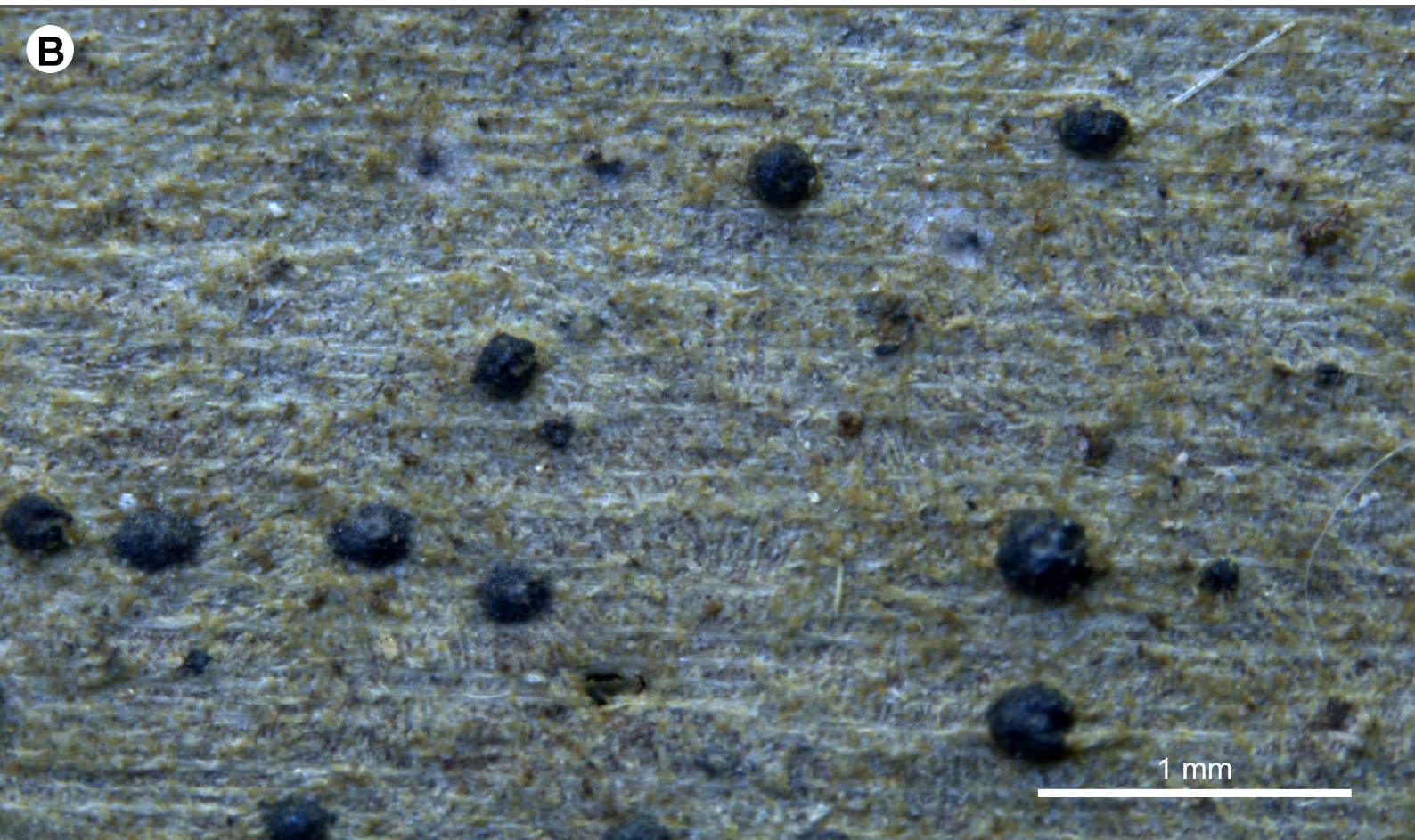


A

1 mm

Lecanora leprosa Fée 1825

Apotécios sésseis, margens da mesma cor do talo e discos beges. @Aido

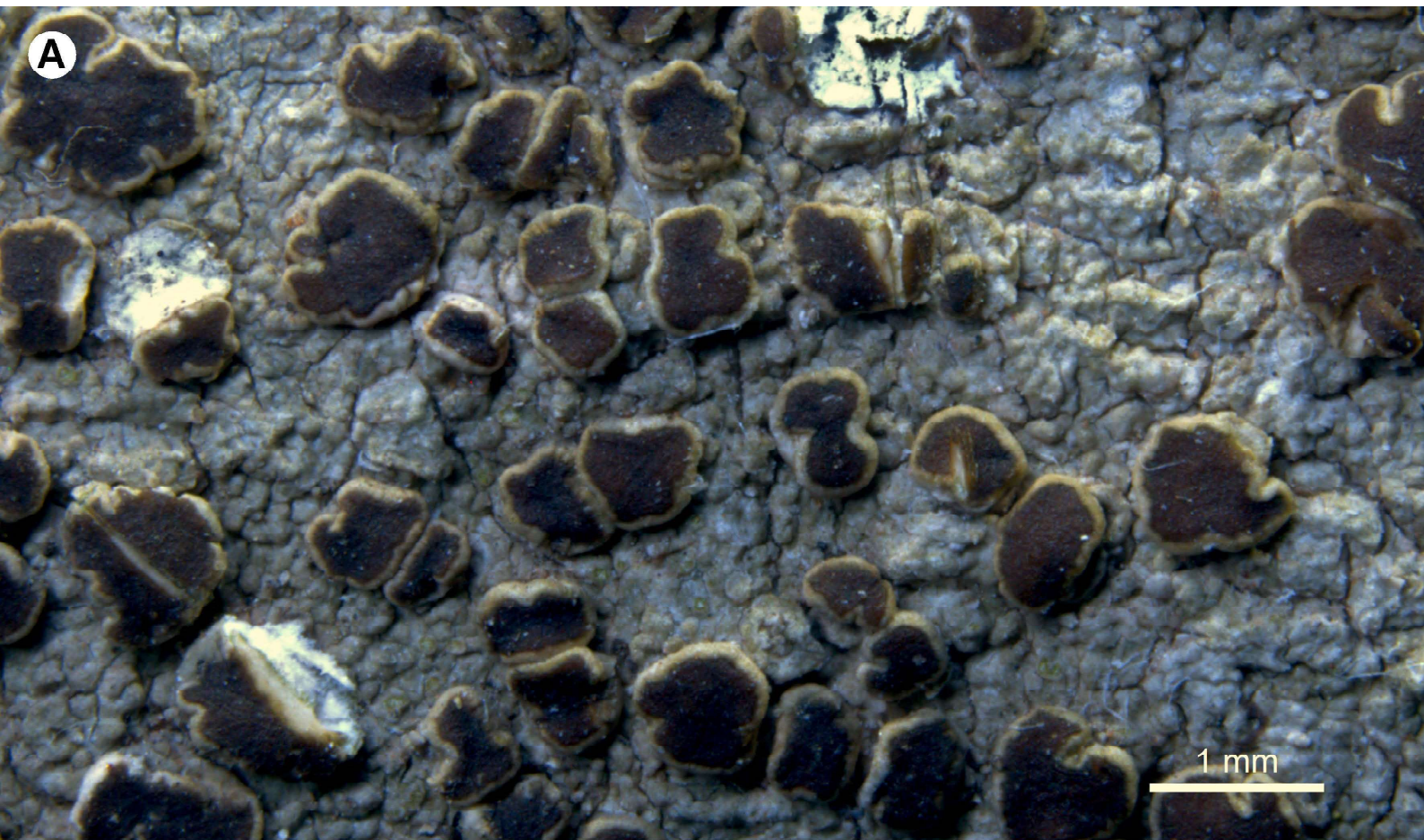


B

1 mm

Mycoporum lacteum (Ach.) R.C. Harris 1995

Talo ecorticado e peritécios negros. @Aido



***Neoprotoparmelia sexdecimspora* L.A. Santos, M. Cáceres & Aptroot 2019**
Apotécios sésseis, discos marrons e margens da mesma cor do talo. @Aido



***Opegrapha astraea* Tuck. 1866**
Lirelas com pruína branca. @Aido



A

1 mm

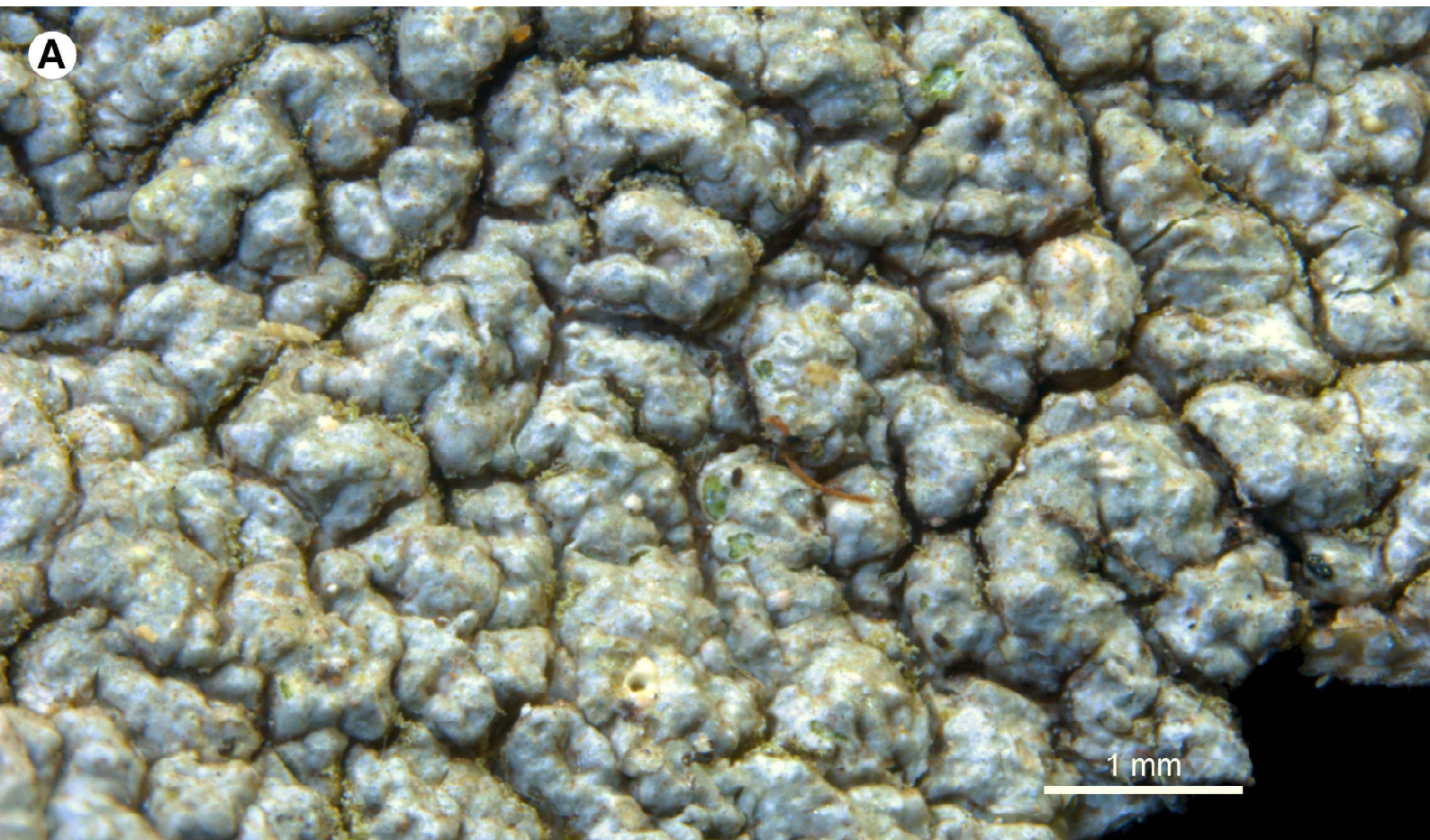
Opegrapha cylindrica Raddi 1820
Lirelas sésseis, negras e disco fechado. @Aido



B

1 mm

Parmotrema mesotropum (Müll. Arg.) Hale 1974
Talo folioso e superfície superior mais ao centro ondualda. @Aido



***Pertusarai flavens* Nyl. 1869**

Peritécio imerso no talo e ostíolo apical e amarelo. @Aido

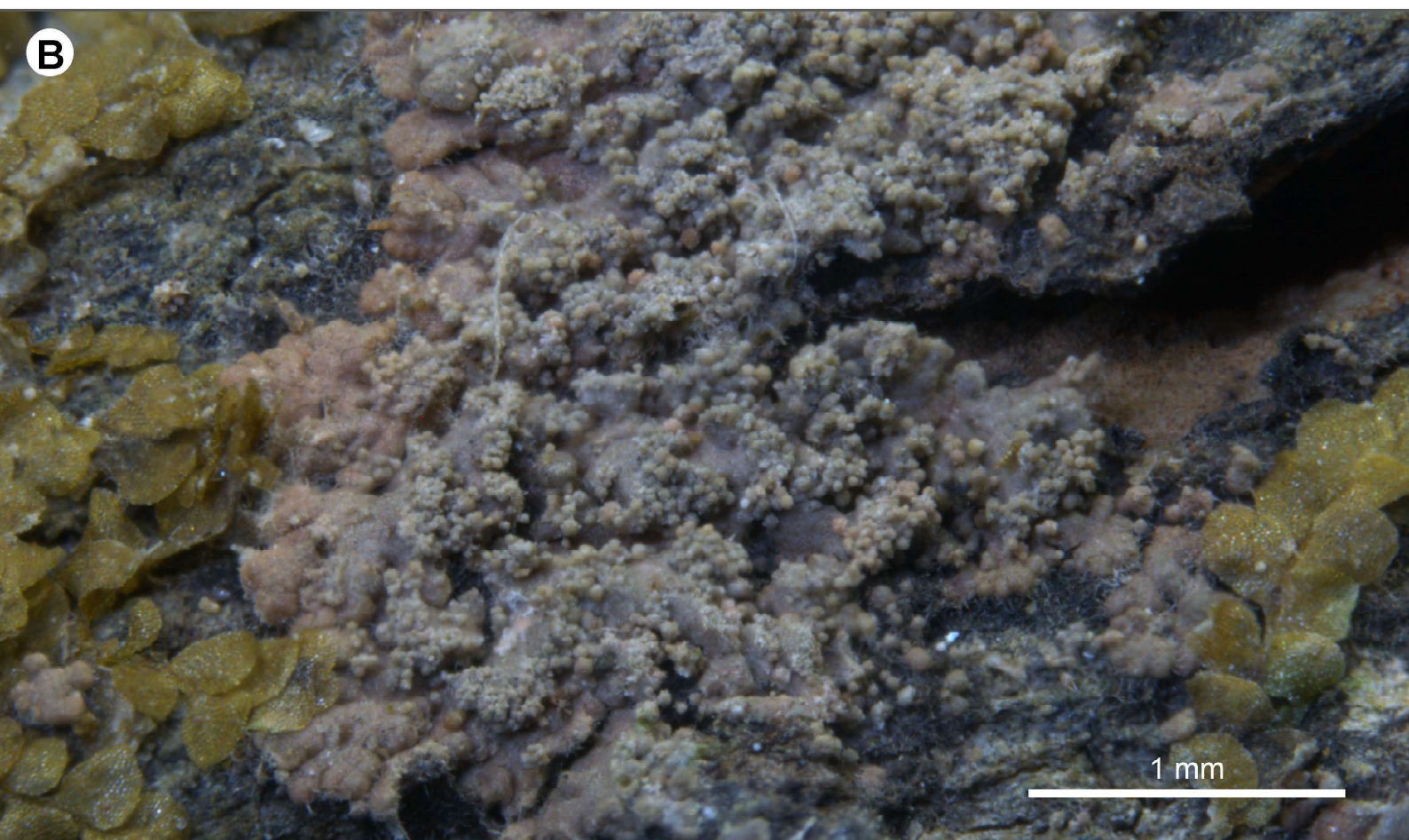


***Phaeographis neutricosa* Redinger 1935**

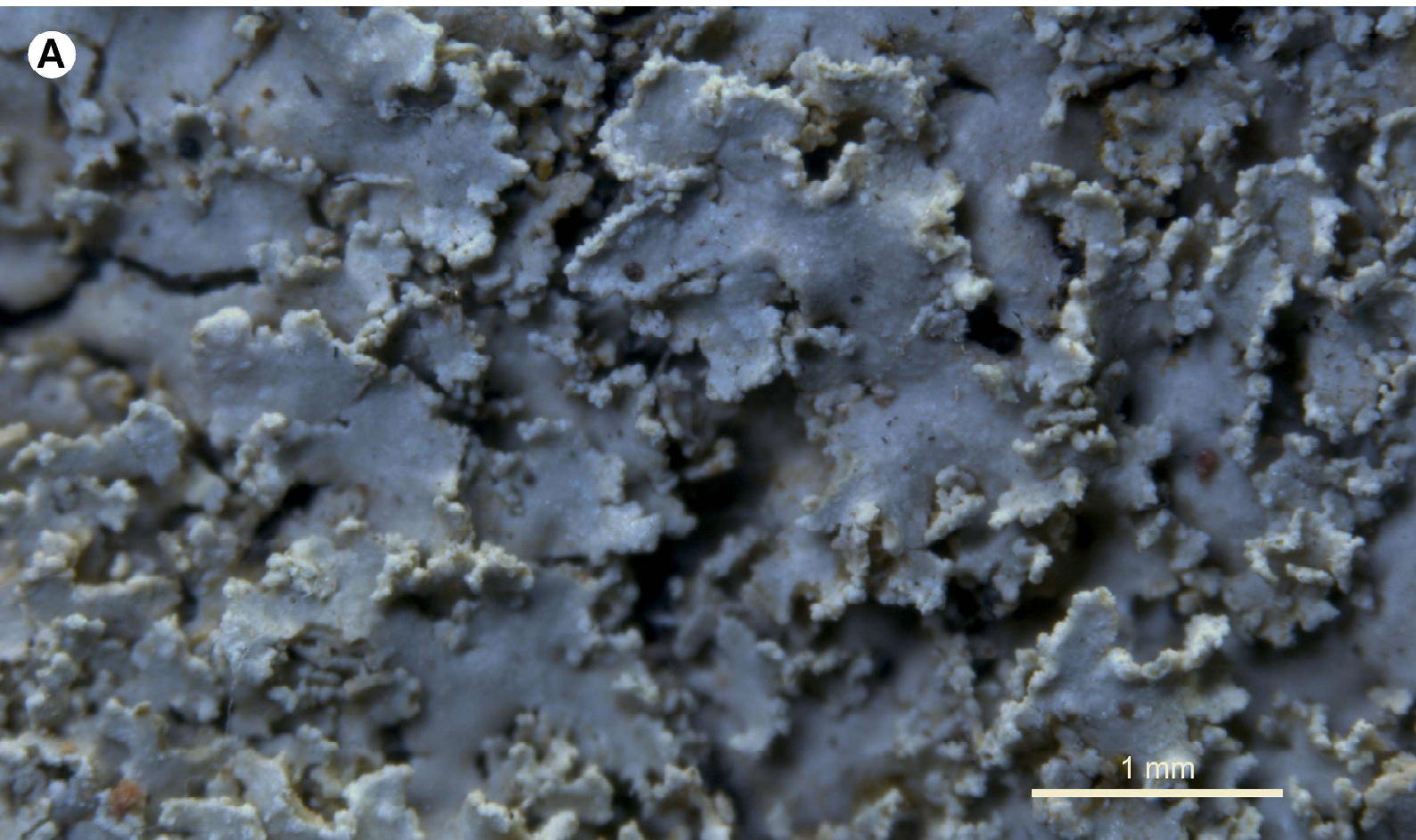
Lirelas côncavas, disco marrom-pálido e margem esbranquiçada a inconspícua. @Aido



***Phaeographis punctiformis* (Eschw.) Müll. Arg. 1882**
Ascoma negro, plano e rente ao talo. @Aido



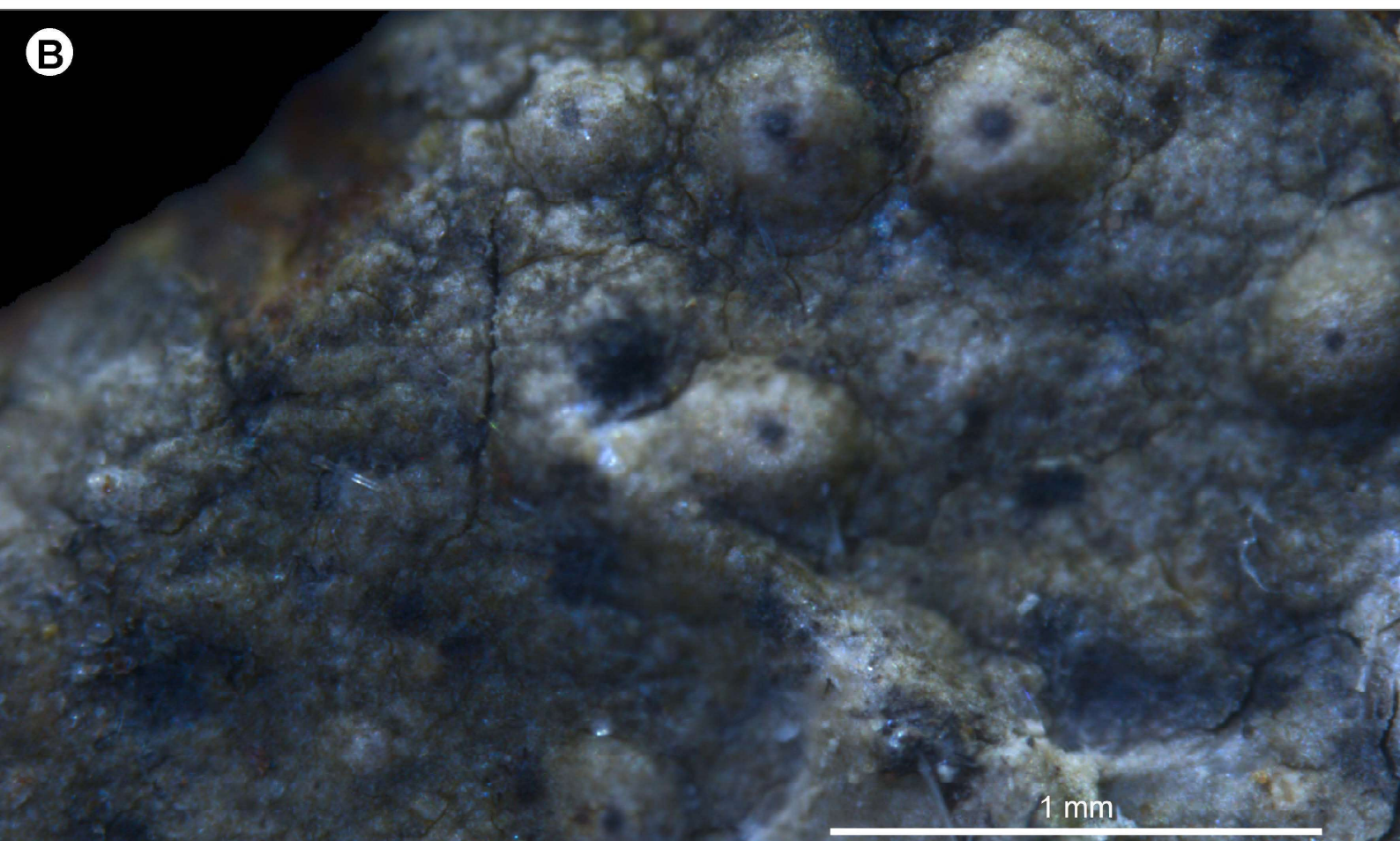
***Phyllopsora soralifera* Timdal 2008**
Talo esquamuloso e sorédios laminais e captados. @Aido



A

1 mm

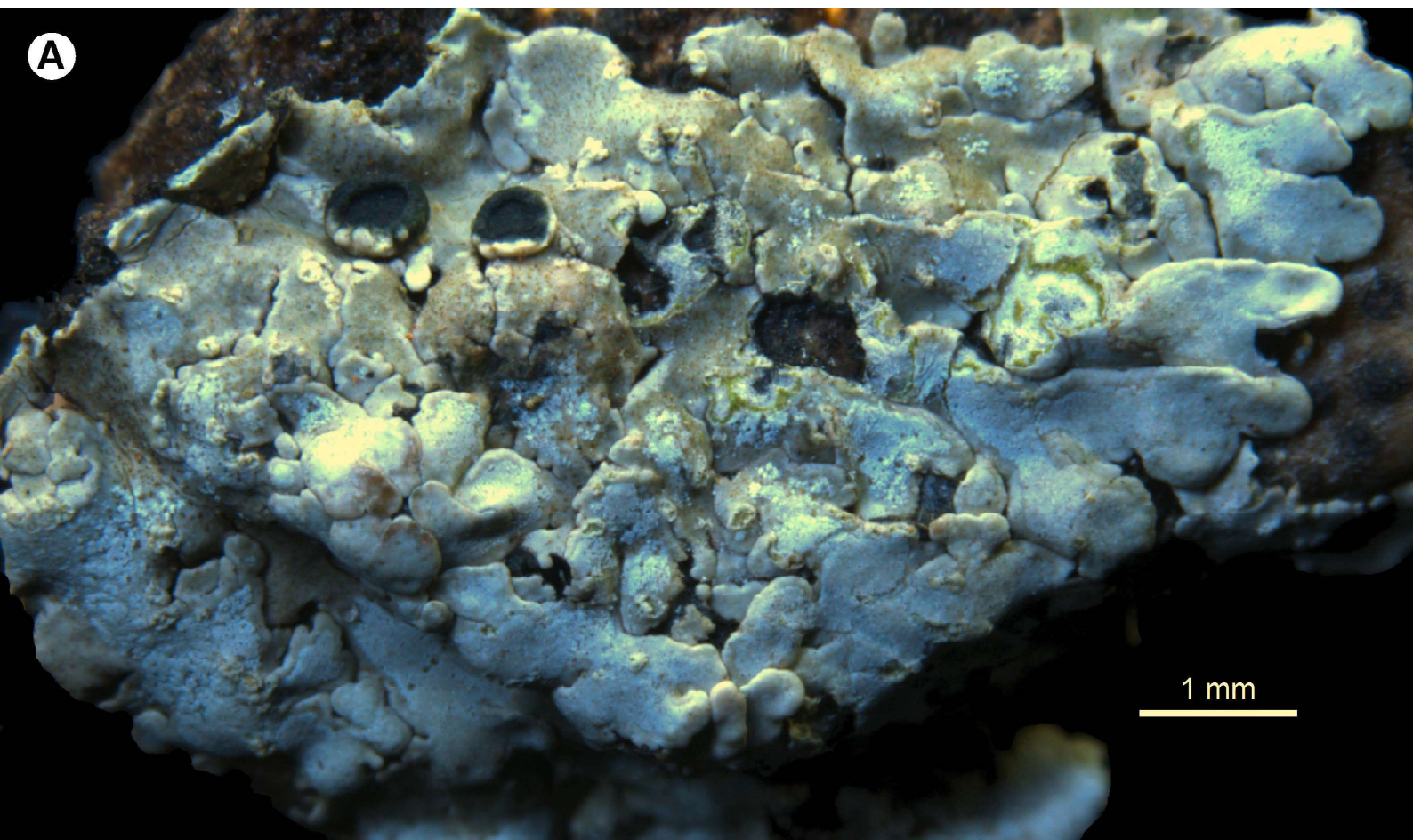
Physcia microphylla Aptroot & M.F. Souza 2020
Talo folioso e com filídios não ramificados. @Aido



B

1 mm

Porina isidioambigua M. Cáceres, M.W.O. Santos & Aptroot 2013
Peritécio imerso e com ostíolo apical e negro. @Aido

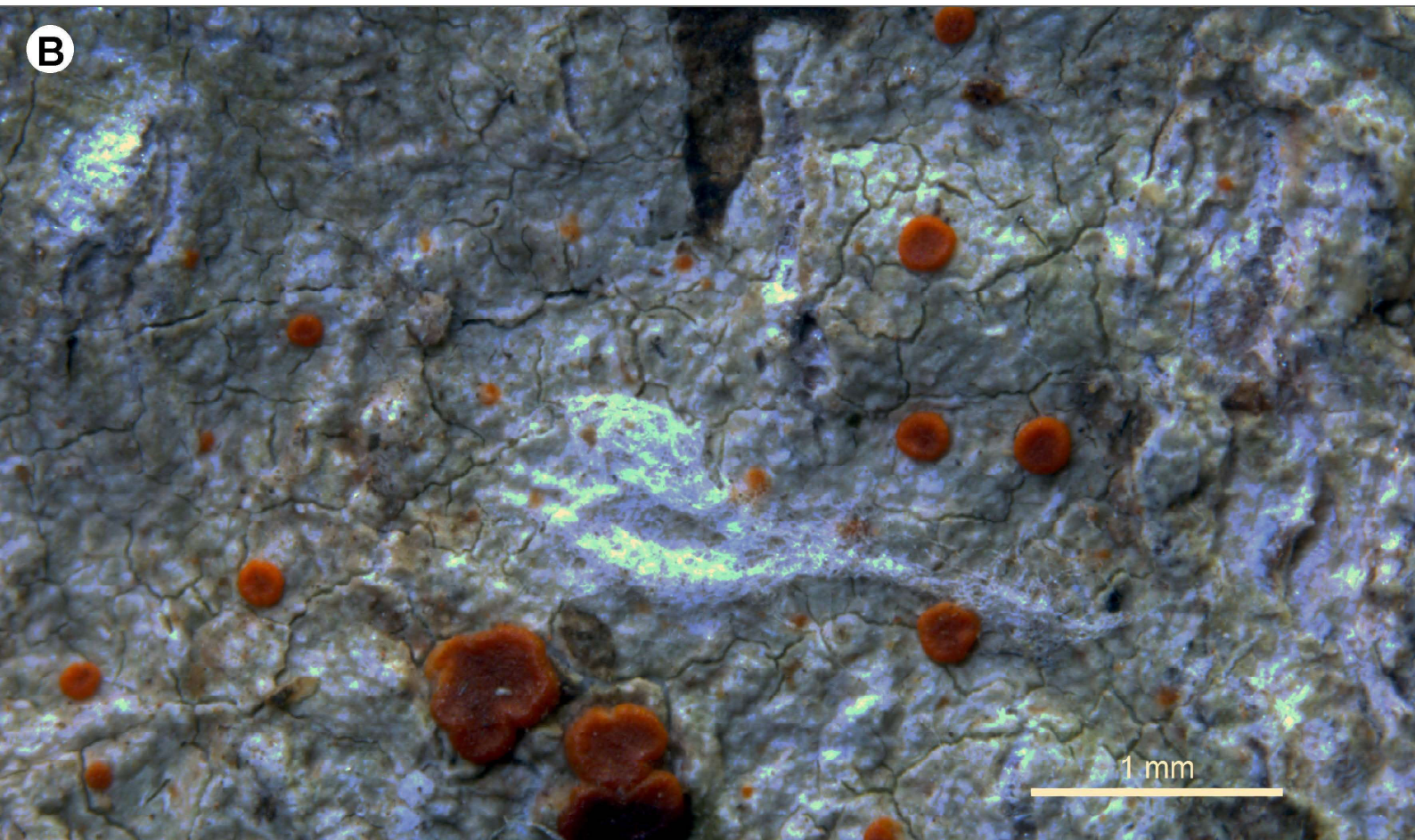


A

1 mm

Pyxine cocoes var. *pallida* (Sw.) Nyl. 1857

Talo com sorédios; Apotécios sésseis, disco negro e margem da mesma cor do talo tornando-se negras quando maduros. @Aido

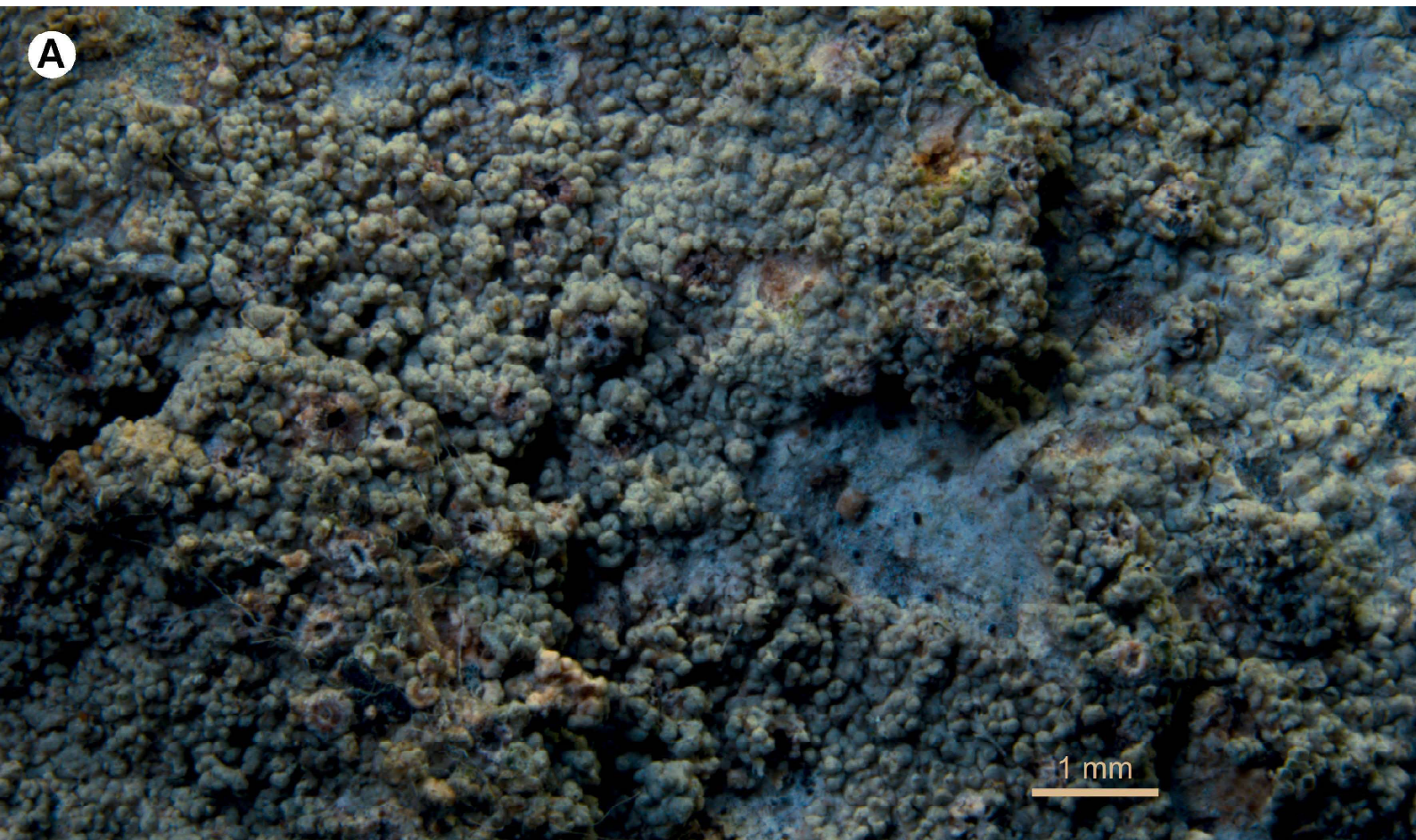


B

1 mm

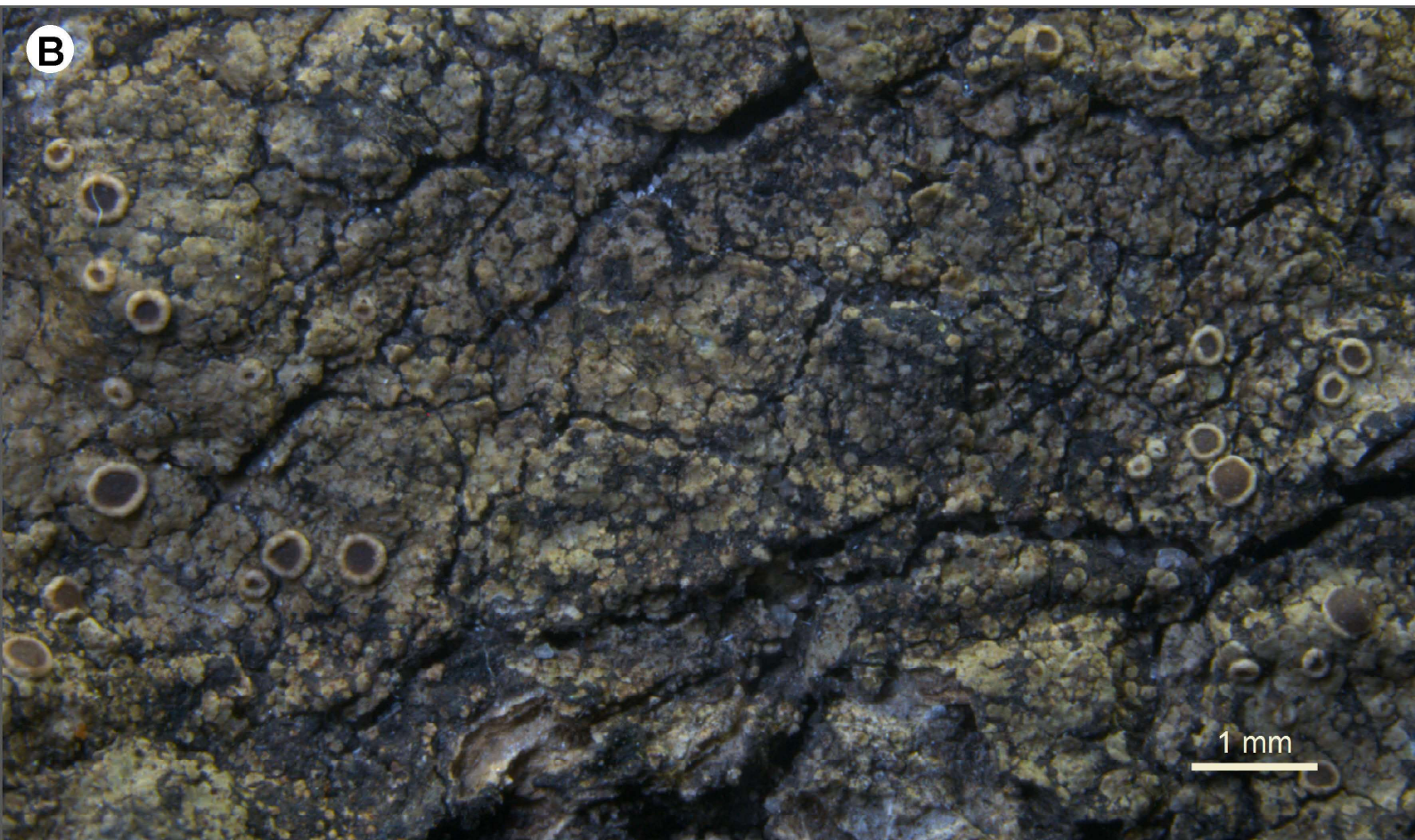
Ramboldia russula (Ach.) Kalb, Lumbsch & Elix 2008

Apotécios sésseis e alaranjados. @Aido



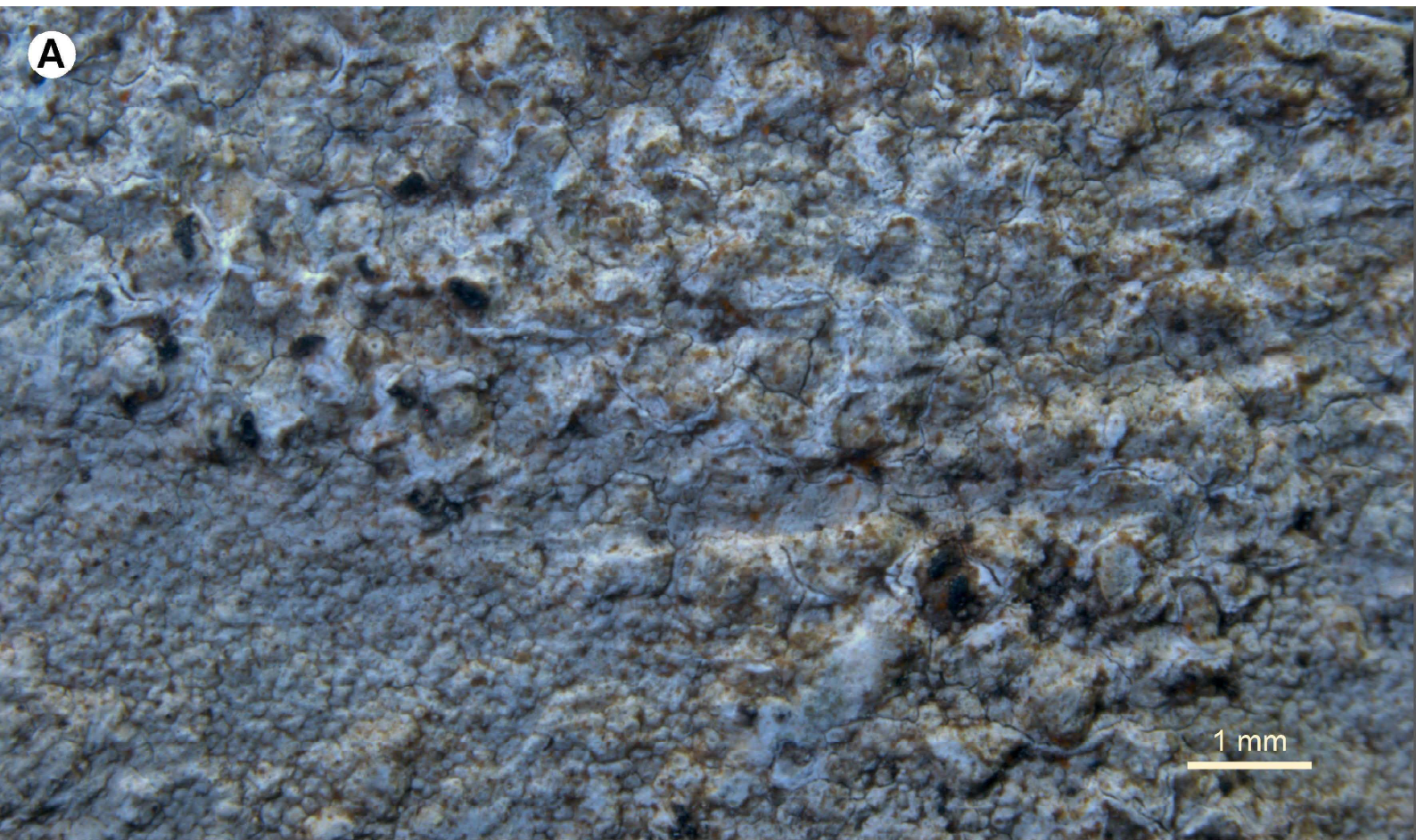
A

***Ramonia valenzueliana* (Mont.) Stizenb. 1862**
Apotécio sésil, côncavo, margem crenada e disco amarelado. @Aido



B

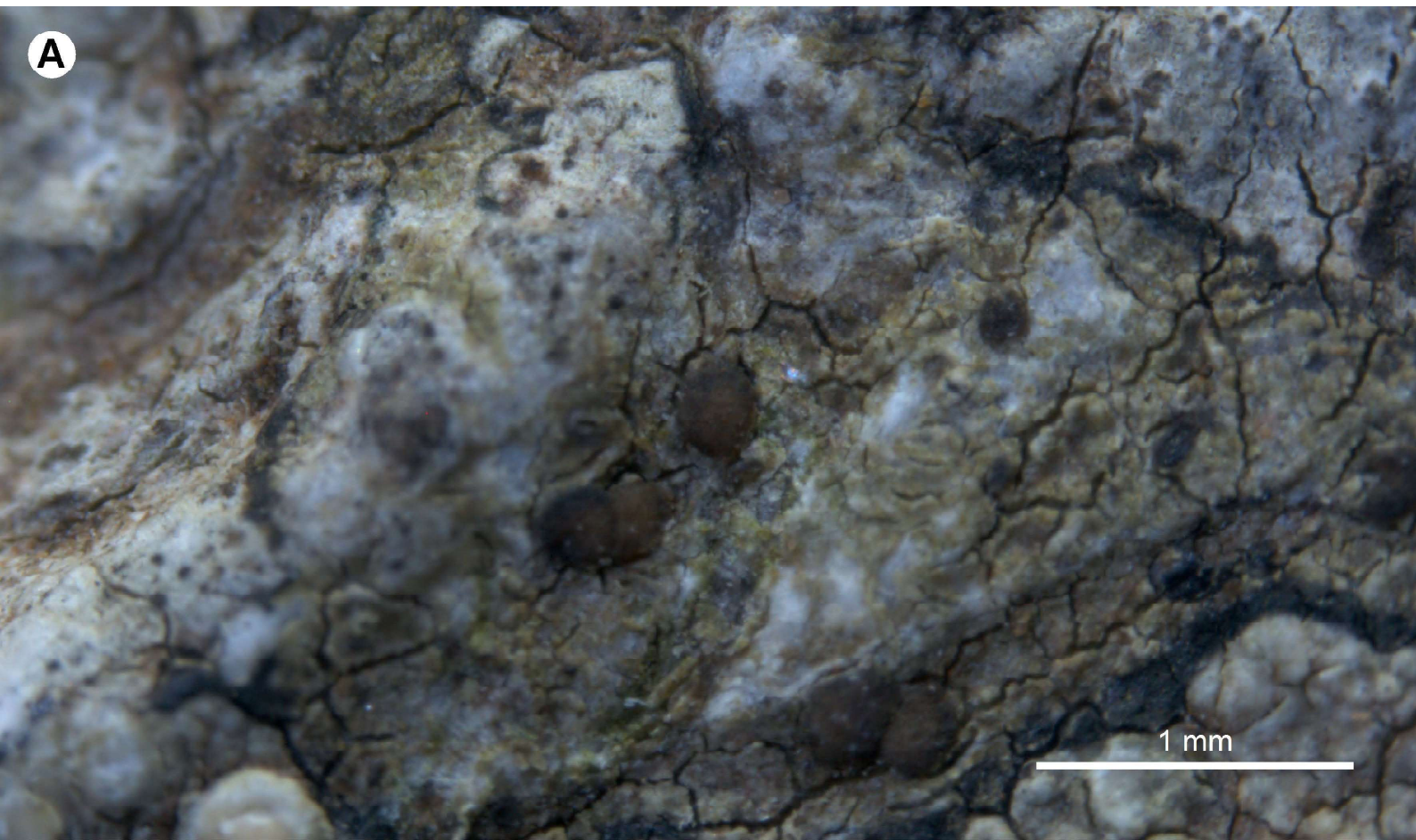
***Rinodina maculans* (Kremp.) Müll. Arg. 1889**
Apotécios sésseis, disco marrom e margem da mesma cor do talo. @Aido



***Stirtonia nivea* Xavier-Leite, M. Cáceres & Aptroot 2014**
Ascoma esbranquiçado, inconspicuo e organizados em linhas. @Aido



***Synarthothelium cerebriforme* Sparrius 2009**
Lirelas marrons imersas em pseudo-estromas. @Aido



***Traponora globosa* Aptroot 2010**
Apotécio séssil, marrom e com margem inconspícua. @Aido



***Trypethelium eluteriae* Spreng. 1804**
Peritécio imerso em pseudo-estromas com pigmento amarelado e ostíolos apicais. @Aido