



Teleostei fishes of the North Coast of Brazil

ALEXANDRE PIRES MARCENIUK^{1,2}, RODRIGO ANTUNES CAIRES³, ALFREDO CARVALHO-FILHO⁴, ALEX GARCIA CAVALLEIRO DE MACEDO KLAUTAU², WAGNER C. ROSA SANTOS^{1,2}, WOLMAR BENJAMIN WOSIACKI¹, LUCIANO MONTAG⁵ & MATHEUS MARCOS ROTUNDO⁶

¹ Museu Paraense Emílio Goeldi, Avenida Governador Magalhães Barata, 376, CEP - 66040-170, São Brás, Belém, PA, Brasil, a_marceniuk@hotmail.com, wagpesca@yahoo.com.br, wolmar@museu-goeldi.br;

² Centro Nacional de Pesquisa e Conservação da Biodiversidade Marinha do Norte - ICMBio/CEPNOR, Rua Tancredo Neves, 2501, CEP - 66635-110, Mangueirão, Belém, PA, Brasil, alex.klautau@icmbio.gov.br;

³ Universidade de São Paulo, São Paulo, Brasil, rodricares@yahoo.com.br;

⁴ Fish Bizz Ltd., São Paulo, Brasil, alfie@telnet.com.br;

⁵ Laboratório de Ecologia e Conservação, Instituto de Ciências Biológicas, Universidade Federal do Pará, Belém, Brasil, lfamontag@gmail.com;

⁶ Acervo Zoológico da Universidade Santa Cecília, Santos, Brasil. UNISANTA, mmrotundo@unisanta.br.

Submetido em: 23/04/2021; Aceito em: 15/07/2021; Publicado em: 17/08/2021

DOI 10.37002/revistacepsul.vol10.1969e2021006

Abstract. The North Coast of Brazil is a biogeographical area of the Exclusive Economic Zone of Brazil that share environmental features with region under influence of the Plume of the rio Amazon and Orinoco. Despite the relevance of the region's fish fauna, in biogeographic, ecologic, and commercial terms, this area is poorly known. This study presents the most complete and updated list of the bony fish fauna from the North Coast of Brazil, aiming to minimize our knowledge gap on such region's biodiversity. The main sources of information were records from zoological collections, inventories obtained during the surveys of the Research and Conservation National Center of Northern Marine Biodiversity and collections from the authors. A total of 787 species of the Teleostei were recorded off the North Coast of Brazil and adjacent waters, representing 156 families and 45 orders. Most (531) of these species are coastal, 256 inhabit deeper water, and 31 pelagic (oceanic) species are common to both the internal and external continental shelf, of which 54 represent new records. Given the progressive intensification of fisheries and increasing incentives for the exploitation of the local gas and oil reserves, a more adequate inventory of the marine fish fauna of the North Coast of Brazil is fundamentally important for the management of the region's aquatic biodiversity.

Keywords: Marine biodiversity, Amazon-Orinoco Plume, knowledge gaps, zoological collections.

Resumo. Peixes teleósteos da costa Norte do Brasil. A costa Norte do Brasil é uma área biogeográfica da Zona Econômica Exclusiva brasileira que compartilha características ambientais com a região sob influência da Pluma dos rios Amazonas e Orinoco. Apesar da relevância em termos biogeográficos, ecológicos e comerciais, a ictiofauna da região é muito pouco conhecida. Este estudo apresenta a lista mais completa e atualizada da fauna de peixes ósseos da costa Norte do Brasil, procurando minimizar a lacuna no conhecimento da biodiversidade da região. As principais fontes de informação foram registros de coleções zoológicas, inventários de fauna realizados pelo Centro Nacional de Pesquisa e Conservação da Biodiversidade Marinha do Norte (ICMBio/CEPNOR) e coletas dos autores. Um total de 787 espécies de Teleostei foram registradas para a costa Norte do Brasil e águas adjacentes, com 156 famílias e 45 ordens. A maioria (531) dessas espécies apresenta hábitos costeiros, 256 espécies habitam águas profundas e 31 espécies pelágicas (oceânicas) são comuns à plataforma continental interna e externa, com pelo menos 54 novos registros para região. Dada a intensificação da pesca e o aumento dos incentivos à exploração das reservas de gás e petróleo, o inventário adequado da ictiofauna marinha do Litoral Norte do Brasil é fundamental para o manejo da biodiversidade aquática da região.

Palavras-chave: biodiversidade marinha, pluma dos rios Amazonas-Orinoco, lacuna no conhecimento, coleções zoológicas.

Introduction

The Brazilian coast stretches about 8,500 km in eastern South America and is characterized by a great variety of environments associated with an ample variation of geologic, geographic, climatic, hydrographic, and sedimentological features, including estuaries, lagoons, sandy beaches, phanerogam and rhodolite beds, rocky cliffs, and coral reefs (MMA, 2002, 2006 e 2007). Climatological and oceanographic phenomena, combined with historical factors, determine the variation in the diversity of marine fish found off the different areas of the Brazilian coast (Couto *et al.*, 2003, Amaral & Jablonski, 2005).

The North Coast of Brazil encompasses the region between the mouth of the Oiapoque River, which forms the border between Brazil and French Guiana, and the Parnaíba delta, at the border between Maranhão and Piauí states (Ekau & Knoppers, 1999). This region is one of the most productive portions of the Brazilian coast (MMA, 2006) and supports one of the world's most important fisheries (Correa & Martinelli, 2009). Despite the relevance of the region's fish fauna, in biogeographic, ecologic, and commercial terms, this sector of the Exclusive Economic Zone (EEZ) of the Brazilian

coast has been poorly surveyed (Couto *et al.*, 2003). The lack of inventories of the region's marine fish fauna is clear from the paucity of records in zoological collections, which reflects the limited history of research by taxonomists focusing on the marine organisms of northern Brazil (Marceniuk *et al.*, 2013). As a result, the majority of the records attributed to this region are derived from inferences based on the occurrence of species off the Surinam and Guianas or the northeastern Coast of Brazil (e.g., Menezes *et al.*, 2003).

The most comprehensive inventory of marine fishes available for the North Coast of Brazil was undertaken by the North American National Marine Fisheries Service vessel Oregon between 1957 and 1969, which revealed the presence of a fish fauna highly similar to that found off the Guianas (Collette & Rutzler, 1977). The surveys conducted by the Oregon also provided the first evidence of the existence of a reef system off the Amazon coast and produced a large number of specimens that were deposited in zoological collections in the US, providing the type material for the description of a number of species endemic to the "Amazon-Orinoco Plume" (Briggs & Berry 1959, Woods, 1961, Eschmeyer, 1965, Dawson, 1982, Iwamo-

to & Arai 1987, Nielsen, 1999).

The subsequent surveys of the Pesquisador IV research vessel, between 1973 and 1974, focused on commercially important fish species, which were collected using longlines, traps, and trawls over the continental shelf of the state of Maranhão, in the eastern boundary of the Brazilian North Coast (Sudene, 1976). Between 1977 and 1982, a program of fisheries research and development (PDP) from the Brazilian Fisheries Development Superintendence (SUDEPE) surveyed the demersal resources of the continental shelf off the states of Pará and Amapá, at depths between 10–90 m (Ueno *et al.*, 1978). In 1996 and 1997, an agreement established between the Brazilian and the Japanese governments supported new surveys of the of the estuarine complex of the Amazon and Tocantins rivers, with specimens being deposited in the zoological collection of the Museu Paraense Emílio Goeldi, Belém, Pará (Sanyo Techno Marine, 1998).

The Brazilian National Program for the Assessment of the Sustainable Potential of Natural Resources in the Exclusive Economic Zone (REVIZEE Score-Norte) began in 1996 and again focused on the natural resources exploited by commercial fisheries, in addition to the stocks of potential target species on the continental shelf and slope of the North Coast of Brazil (Lucena & Asano-Filho 2006). This program produced very little information on the region's biota, and specimens collected during those campaigns were not deposited in zoological collections (Marceniuk *et al.*, 2019). Two other projects were developed within the scope of the REVIZEE Score-Norte Program. One was the PROTUNA (Technological Development for the Exploitation of Large Pelagic Oceanic Fish off the North Coast of Brazil) conducted between 2000 and 2002 (Asano-Filho, 2004), and the other was the PRODEMERSAL (Technological Development for the Exploitation of Demersal Resources using Trawls off the North Coast of Brazil), between 2002 and 2004 (Asano-Filho, 2005). The main focus of these projects was the inventory of the stocks of potential target species of pelagic and demersal fishes. As a result, lists of the species captured

were published (Asano-Filho, 2004 and 2005). However, as in the case of the REVIZEE Score-Norte Program, overall, these projects did not provide specimens to scientific collections (Klautau *et al.*, 2020).

The fauna of the coastal and reef environments of the region is also poorly documented (Eskinazi & Lima, 1968, Collette & Rutzler 1977, Rocha & Rosa, 2001, Espírito-Santo & Isaac 2005, Moura *et al.*, 2016, Marceniuk *et al.*, 2017). However, several advances have been achieved in recent years, mainly through inventories conducted by the Research and Conservation National Center of Northern Marine Biodiversity, ICMBio/CEPNOR (Marceniuk *et al.*, 2019), with important advances being made in the accumulation of specimens that confirm the presence of endemic species in the region (Caires *et al.*, 2019), as well as records (Rotundo *et al.*, 2019).

This study is the result of the authors' collections and compilation of the available data on the marine bony fish fauna of the North Coast of Brazil, aiming to reduce the knowledge gap on the marine biodiversity of the region. Based on the results, we provide insights into the origin, evolution, and diversification of the region's marine fish fauna.

Materials and methods

Study area

The North Coast of Brazil (Figure 1) is a biogeographical area of the Exclusive Economic Zone of Brazil (Ekau & Knoppers, 1999), between the mouth of the Oiapoque River and the Parnaíba delta, that share environmental features observed along region under influence of Amazon and Orinoco Plume. This area encompasses the sedimentary basins of the Amazon River and the states of Piauí and Maranhão, which were formed during the Paleozoic and was reactivated between the late Jurassic and early Cretaceous (Martins *et al.*, 1979). This area encompasses the sedimentary basins of the Amazon River and Piauí/Maranhão, which formed during the Paleozoic and was reactivated between the late Jurassic and early Creta-

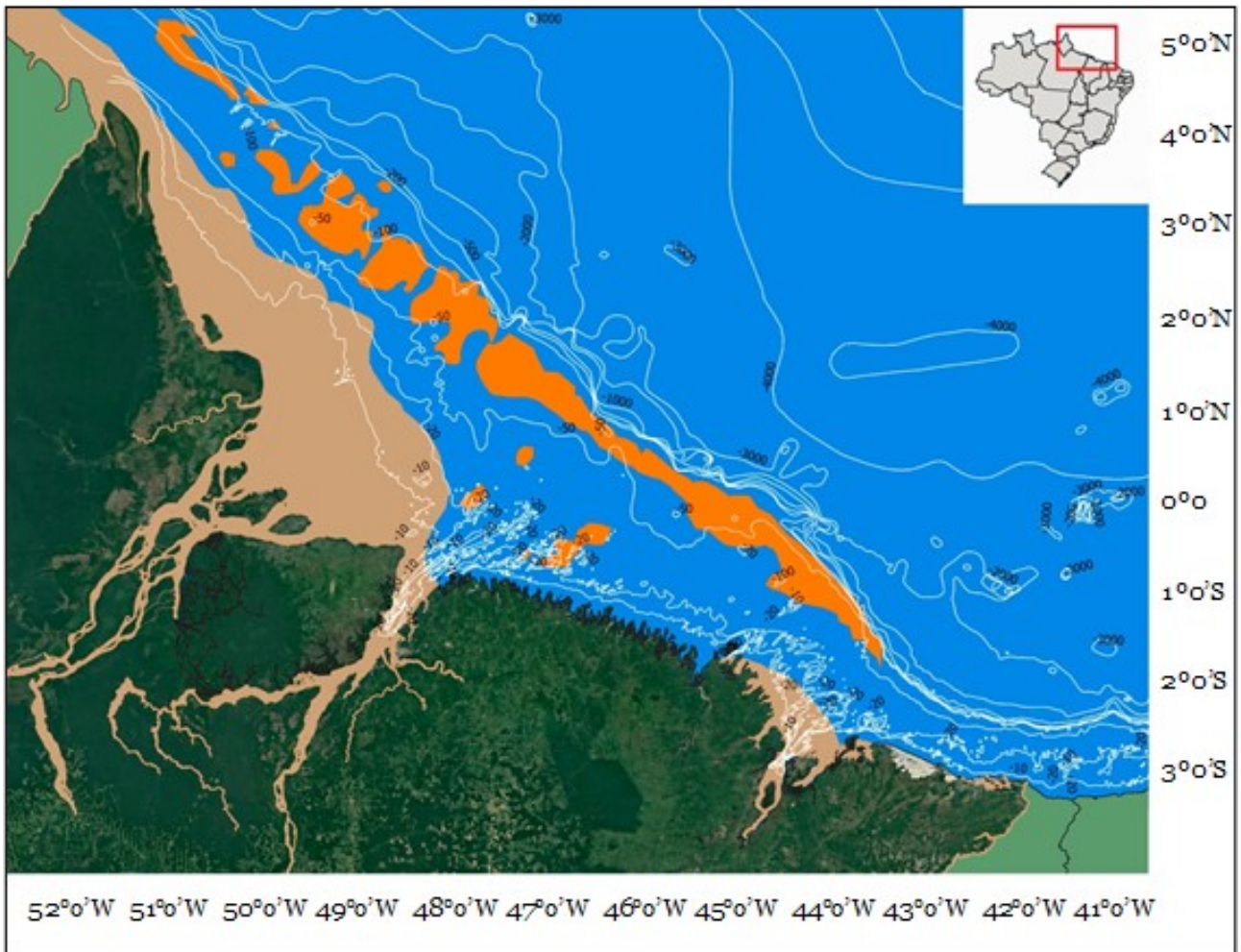


Figure 1. North Coast of Brazil, with the plumes (shaded brown) of the Amazon, Pará, Mearim, and Parnaíba rivers (from north to south) and the Great Amazon Reef System (shaded orange) indicated (Moura *et al.*, 2016, Francini-Filho *et al.*, 2018).

ceous (Martins *et al.*, 1979). This coast stretches more than 2,500 km, and includes a highly heterogeneous coastline that can be divided into three sectors: (i) the Amapá state coast, with a relatively straight coastline and continental shelf dominated by hard and rocky substrates; (ii) the Pará state coast, with an indented coastline and continental shelf dominated primarily by muddy substrates, and (iii) the Maranhão state coast, also with an indented coastline west of Tubarão Bay, which then becomes more straight between the Cape of Gurupi and the rio Parnaíba mouth, with a continental shelf formed by a mixture of muddy and sandy substrates.

The geomorphology of the whole region is highly unstable due to the processes of erosion and the high levels of sediment deposition, which contribute to the formation of flood

plains and innumerable islands (Floriani *et al.*, 2004). The jagged, indented coastline favors the formation of estuarine ecosystems, which are dominated by mangrove forest, with the states of Amapá, Pará, and Maranhão together encompassing the world's largest continuous tract of mangrove, with an area of some 8,900km², responsible for an enormous input of nutrients into the adjacent marine waters (Paiva, 1981, Dittmar, 1999). The Amazon River alone discharges between 80,000 and 250,000 m³ of freshwater per second (Curtrin, 1986), carrying annually up to 1.4 million tons of sediment into the ocean (Milliman & Meade, 1983, Degens *et al.*, 1991). This enormous input of freshwater and sediment into the marine environment results in a highly energetic and dynamic system that influences a series of oceanographic processes and determines the

composition and distribution of natural resources in the region (Nittrouer & Demaster, 1986, Costa & Figueiredo, 1998).

The region's high biological productivity supports a complex food web in the coastal environments and a considerable biomass, which is exploited intensively by local fisheries (Isaac & Barthem 1995, Sanyo Techno Marine, 1998, Isaac-Nahum, 2006). The hydrological dynamics of the northern coast, in particularly off the mouth of the Amazon River, are also subjected to considerable seasonal variation, which is influenced by fluctuations in the discharge of the Amazon River, the North Brazil Current and the trade winds (Shimabukuro *et al.*, 2005). The North Brazil, or Guianas Current transports water from the external shelf and slope to the northwest, while the tidal cycle and rainfall patterns provide the nutrients that support the demersal coastal fauna (Richardson *et al.*, 1994, Oliveira *et al.*, 2004, Oliveira *et al.*, 2007). The pelagic environment of the continental shelf is considered as oligotrophic, with a relatively shallow eutrophic zone, which is maintained by nutrients derived from the transportation of benthic organic material into shallow coastal sectors, and through the discharge of rivers and estuaries, which enrich the local waters (Teixeira & Gaeta, 1991). This region is also influenced by the basin of the Orinoco River, with the combined discharge of the Amazon and Orinoco rivers forming unique oceanographic conditions in the "Amazon-Orinoco Plume", which creates unique oceanographic conditions (Hu *et al.*, 2004, Grodsky *et al.*, 2014).

The North Coast of Brazil is also influenced by the waves formed by the trade winds, which regularly reach a height of 1.5 m on the open sea, although they may increase to an amplitude of 3 m and speeds of approximately 30 cm/s during the Amazonian winter, and during extra-tropical cyclones in the northern hemisphere (Cachione *et al.*, 1995). The surface temperature of the water may reach 31°C close to the coast and 27°C on the continental shelf. In the adjacent oceanic waters, the thermocline is located at a depth of approximately 120 m, with temperatures of 17°C at depths of up to 200 m.

The salinity of the estuarine and coastal waters is reduced by the discharge of the rivers, increasing towards the open sea, reaching 36.9‰ in the oceanic waters (Oliveira *et al.*, 2004, Oliveira *et al.*, 2007, Grodsky *et al.*, 2014).

The continental shelf of the North Coast of Brazil is also extensive and mostly flat. However, the internal portion of the continental shelf, between the Pará and Parnaíba rivers is undulating, with ridges of coarse and quartz sand that may reach heights of 10 m. Off Amapá, the internal continental shelf is covered with deposits of fluvial mud, which shift progressively to quartz sands in Pará and Maranhão, formed by the remnants of deposits laid down when sea levels were lower than those of the present day (Kowsmann & Costa, 1979). The internal shelf presents isolated deposits of fluvial sand in areas off the mouths of the Amazon and Pará rivers. The highly turbid sediment discharge of the Amazon River may extend around 500 km to the northwestern more than 200 km off the mouth of the river (Curtrin, 1986). The muddy bottom adjacent to the mouth of the Amazon River is composed principally of fine sand (silt), while the northwestern shelf is rich in clay, a condition that is probably determined by the local tidal currents (Kowsmann & Costa, 1979, Coutinho, 1996).

The Amazon Cone, adjacent to the mouth of the Amazon River, is formed by the accumulation of sediments from the Amazon River and extends beyond the limits of the Exclusive Economic Zone. The Amazon Cone does not form a typical continental shelf with well-defined depth gradients, for instance, but is continuous to and extends as far as the abyssal plain, being interrupted only by paleo channels and other non-tectonic geological features resulting from depositional or erosional processes (Coutinho 1996, Oliveira *et al.*, 2015). The external portion of the Amazon continental shelf is quite irregular, with numerous gullies and canyons, and an abrupt shift in slope at a depth of 80 m. At depths between 60 and 120 meters, three carbonate facies can be found, formed by molluscs, benthic foraminifers and Holocene algae typical of shallow coastal zones, in addition to bioturbated sands

(Kowsmann & Costa, 1979, Lana *et al.*, 1996, Oliveira *et al.*, 2004, Oliveira *et al.*, 2007, Oliveira *et al.*, 2015). The slope of the shelf tends to decrease where it widens, while it narrows towards the outer extremities of the Amazon Gulf, following the increase in the coastal relief.

The Great Amazon Reef System (GARS) is a complex environment with a consolidated bottom formed by living organisms, first recognized by Collette & Rutzler (1977). The recognition of the GARS was later reinforced by dredge probes and underwater photography obtained by the Deep Worker submarine at depths of between 70 m and 250 m (Cordeiro *et al.*, 2015, Moura *et al.*, 2016, Francini-Filho *et al.*, 2018). The available evidence indicates that the GARS covers a total area of 9,500 km² (Moura *et al.*, 2016), and is made up of typical mesophotic coral reefs at depths of between 70 m and 220 m, constructed primarily of calcareous algae, sponges, and scleractinian corals, which may potentially cover a total area of approximately 56,000 km² (Francini-Filho *et al.*, 2018). The enormous diversity of habitats, including algae, rhodolites, sponges, soft coral, and black coral (Cordeiro *et al.*, 2015) is delimited by the discharge of sediments and suspended material from the Amazon River, as well as the strong local marine currents. On the middle continental shelf, the penetration of sun light is modulated by an interplay between the Amazon River plume and by the more transparent waters of the North Brazil Current (Francini-Filho *et al.*, 2018).

Data base

The list of species of the Teleostei that occur on the North Coast of Brazil is the result of the inventory of the Research and Conservation National Center of Northern Marine Biodiversity (CEPNOR) conducted between 2016 and 2020, with the material collected being deposited in Brazilian zoological collections. All the species cited are therefore represented by voucher specimens in zoological collections (Table 1), photographic records of the CEPNOR or REVIZEE database (Figures 2 and 3) and

collections of the authors themselves or fellow researchers (see Acknowledgments). Records from French Guiana and Suriname, that share the same geological history and environmental conditions, without physical or oceanographic barriers, were based on the published records of specimens in zoological collections (Uyeno *et al.*, 1983). Additionally, records were checked in three databases: SpeciesLink (<http://www.splink.org.br/>), FishNet2 (<http://www.fishnet2.net>), and the Global Biodiversity Information Facility (<https://www.gbif.org>). The inventory presented here does not include species of groups found primarily in freshwater environments, i.e., Siluriformes, except for the Ariidae, and species of primarily marine groups that are restricted to freshwater habitats (e.g., *Plagioscion* Gill, 1861).

Records of the species from other biogeographic areas in the western Atlantic also were also checked in data bases listed above (Table 1 column K-L), including the East Coast of the United States, the Gulf of Mexico, Caribbean, and the northeastern, eastern, southeastern and southern coasts of Brazil (Ekau & Knoppers, 1999). The conservation status of each species at the national (Brazil) and global level were obtained from the Red Book of the Brazilian Fauna Threatened with Extinction (ICMBio, 2018) and the IUCN Red List of Threatened Species (<http://www.iucnredlist.org>).

Taxonomic procedures and assessment of life traits

The species nomenclature follows Eschmeyer's Catalog of Fishes (Fricke *et al.*, 2019), with classification above genus following Nelson (2006), with the genera and species, within each family, being presented in alphabetic order in Table 1. The species were divided into coastal, that is, fishes that are more common at depths up to 100 m, and deep water species, which are more common at depths below 100 m. Pelagic species living in both coastal and deeper regions are recognized as oceanic. Species recorded off French Guiana and Suriname but not in Brazil were recognized as rec-

Table 1. The marine Teleostei fishes from North Coast of Brazil (asterisks represent new records). A - Vouchers. B - Habitat: coastal (C), waters depth (DW), oceanic (O). Asterisk corresponds to registration only for French Guinea and Suriname. C - Estuarine. D - Soft bottom. E - Reef. F - Water column. G - Pelagic. H - Demersal. I - Benthic. J - Distribution. K - USA East coast. L - Gulf of Mexico. M - Caribbean. N - Brazilian North coast, plus Pluma do Amazonas Orinoco. O - Brazilian Northeast coast. P - Brazilian East coast. Q - Brazilian Southeast coast. R - Brazilian South coast. S - Conservation status in Red Book of the Brazilian Fauna Threatened with Extinction (ICMBio, 2018). T - Conservation status in IUCN Red List of Threatened Species (<https://www.iucnredlist.org>).

Táxon	A	B	C	D	E	F	G	H	I	J	K	L	M	N	O	P	Q	R	S	T
ELOPIFORMES																				
ELOPIDAE																				
<i>Elops smithi</i> McBride, Rocha <i>et al.</i> , 2010	MPEG 32873	C	X	X	X	X	X	X	X	Western Atlantic	0	1	1	1	1	1	1	1	1	LC DD
MEGALOPIDAE																				
<i>Megalops atlanticus</i> Valenciennes, 1847	MPEG 33669	C	X	X	X	X	X	X	Atlantic	1	1	1	1	1	1	1	1	0	0	VU VU
ALBULIFORMES																				
ALBULIDAE																				
<i>Albula gorensis</i> Valenciennes, 1847 *	Fig. 2A	C	X	X	X	X	X	X	Atlantic	1	0	1	1	1	1	0	0	0	0	N N
<i>Albula nemoptera</i> (Fowler, 1911) *	NSMT-P-40058	C	X	X	X	X	X	X	Western Atlantic	0	0	1	1	1	1	1	0	0	0	LC DD
<i>Albula vulpes</i> (Linnaeus, 1758)	MPEG 35113	C	X	X	X	X	X	X	Circumglobal	1	1	1	1	1	1	1	1	1	1	DD NT
NOTACANTHIFORMES																				
HALOSAUROIDAE																				
<i>Aldrovandia oleosa</i> Sulak, 1977	FLMNH 231478	DW*	X	X	X	X	X	X	Circumglobal	1	0	1	1	1	1	1	0	0	0	LC LC
<i>Halosaurus guentheri</i> Goode & Bean, 1896	NSMT-P-40084	DW*	X	X	X	X	X	X	Atlantic	1	1	1	1	1	1	0	0	0	0	LC LC
ANGUILLIFORMES																				
CHLOPSIDAE																				
<i>Robinsia catherinae</i> Bohlke & Smith, 1967	MCZ 99337	DW	X	X	X	X	X	X	Circumglobal	1	0	1	1	1	0	0	0	0	0	N LC
SYNAPHOBANCHIDAE																				
<i>Dysommia rugosa</i> Ginsburg, 1951	NSMT-P-40066	DW*	X	X	X	X	X	X	Circumglobal	1	1	1	1	1	1	1	1	1	1	LC N
<i>Synphobranchus brevidorsalis</i> Günther, 1887	NSMT-P-40065	DW*	X	X	X	X	X	X	Circumglobal	1	1	1	1	1	1	1	1	1	1	LC NA
<i>Synphobranchus oregoni</i> Castle, 1960	FLMNH 228255	DW*	X	X	X	X	X	X	Circumglobal	0	1	1	1	1	1	1	1	1	1	LC LC
HETERENCHELYIDAE																				
<i>Pythontichthys sanguineus</i> Poey, 1868	MPEG 35269	C	X	X	X	X	X	X	Western Atlantic	0	1	1	1	0	0	0	0	0	0	N LC
MURAENIDAE																				
<i>Channomuraena vittata</i> (Richardson, 1845) *	MPEG uncataloged	C	X*	X*	X*	X*	X*	X*	Circumglobal	1	1	1	1	1	1	0	0	0	0	LC LC
<i>Enchelycore nigricans</i> (Bonnaterre, 1788) *	AZUSC 5432	C	X*	X*	X*	X*	X*	X*	Atlantic	1	1	1	1	1	1	1	0	0	0	LC LC

Table 1. Continuation.

Táxon	A	B	C	D	E	F	G	H	I	J	K	L	M	N	O	P	Q	R	S	T
MURAENIDAE																				
<i>Gymnothorax conspersus</i> Poey, 1867	AZUSC 5059	DW	X	X	X	X	X	X	X	Western Atlantic	1	1	1	1	1	1	1	1	DD	LC
<i>Gymnothorax funebris</i> Ranzani, 1839	CIUFES 2636	C	X	X	X	X	X	X	X	Atlantic	1	1	1	1	1	1	1	0	DD	LC
<i>Gymnothorax moringa</i> (Cuvier, 1829)	GEA 39	C		X*	X*	X*	X*	X*	X*	Atlantic	1	1	1	1	1	1	1	0	DD	LC
<i>Gymnothorax nigromarginatus</i> (Girard, 1858) *	MPEG uncataloged	C	X	X	X	X	X	X	X	Western Atlantic	1	1	1	0	0	0	0	0	N	LC
<i>Gymnothorax ocellatus</i> Agassiz, 1831	MPEG 35107	C	X	X	X	X	X	X	X	Western Atlantic	1	1	1	1	1	1	1	1	DD	LC
<i>Gymnothorax polygonius</i> Poey, 1875	Klautau et al. 2020	DW		X*	X*	X*	X*	X*	X*	Atlantic	1	1	1	1	1	1	1	0	DD	LC
<i>Gymnothorax vicinus</i> (Castelnau, 1855)	GEA 14	C		X*	X*	X*	X*	X*	X*	Atlantic	1	1	1	1	1	1	1	0	DD	LC
<i>Uropterygius macularius</i> (Lesueur, 1825)	FLMNH 212317	C		X*	X*	X*	X*	X*	X*	Western Atlantic	1	1	1	1	1	1	1	0	LC	LC
DERYCHTHYIDAE																				
<i>Coloconger meadi</i> Kanazawa, 1957	Klautau et al. 2020	DW	X	X	X	X	X	X	X	Western Atlantic	0	1	1	1	1	1	1	0	LC	N
<i>Nessorhamphus ingolfianus</i> (Schmidt, 1912)	NSMT-P-40082	DW*		X	X	X	X	X	X	Circumglobal	1	1	1	1	1	0	0	0	N	LC
OPHICHTHIDAE																				
<i>Aplatophis chautiodus</i> Böhlke, 1956 *	AZUSC 5456	C	X	X	X	X	X	X	X	Western Atlantic	0	1	1	1	1	0	0	0	N	LC
<i>Asarenchelys longimanus</i> McCosker, 1985	MNHN B-2994	C	X	X	X	X	X	X	X	Western Atlantic	0	0	0	1	1	0	0	0	DD	LC
<i>Echiopis interinctus</i> (Richardson, 1848) *	MPEG 35510	C	X	X	X	X	X	X	X	Western Atlantic	1	1	0	1	0	1	0	0		
<i>Echiopis punctifer</i> (Kaup, 1859) *	AZUSC 5409	C	X	X	X	X	X	X	X	Atlantic	1	1	1	1	1	1	1	1	N	LC
<i>Ichthyapus ophioneus</i> (Evermann & Marsh, 1900)	FSBC 16923	C	X*	X*	X*	X*	X*	X*	X*	Atlantic	1	1	1	1	1	1	1	0	LC	LC
<i>Kertomichthys blastorhinos</i> (Kanazawa, 1963)	USNM 158960	DW*		X	X	X	X	X	X	Western Atlantic	0	1	0	1	0	0	0	0	N	N
<i>Myrophis plumbeus</i> (Cope, 1871)	USNM 214067	C	X*	X*	X*	X*	X*	X*	X*	Atlantic	0	1	1	1	1	0	0	0	LC	LC
<i>Ophichthus cylindroideus</i> (Ranzani, 1839)	MPEG 35643	C	X	X	X	X	X	X	X	Western Atlantic	1	0	1	1	1	1	1	1	LC	LC
<i>Ophichthus gomesii</i> (Castelnau, 1855)	AZUSC 5635	C	X	X	X	X	X	X	X	Western Atlantic	1	1	1	1	1	1	1	1	LC	LC
<i>Ophichthus ophis</i> (Linnaeus, 1758) *	AZUSC 5179	C	X	X	X	X	X	X	X	Atlantic	1	1	1	1	1	1	1	0	LC	LC
<i>Stictorhinus potamius</i> Böhlke & McCosker, 1975	ANSP 128521	C	X*	X*	X*	X*	X*	X*	X*	Western Atlantic	1	0	1	1	1	1	0	0	LC	LC
MURAENESOCIDAE																				
<i>Gynoponticus savanna</i> (Bancroft, 1831)	MPEG 35223	C	X	X	X	X	X	X	X	Western Atlantic	1	1	1	1	1	1	1	0	LC	LC
NETTASTOMATIDAE																				
<i>Hoplunnis diomediana</i> Goode & Bean, 1896	NSMT-P-40077	DW*	X	X	X	X	X	X	X	Western Atlantic	1	1	1	1	0	0	0	0	N	LC
<i>Hoplunnis macrura</i> Ginsburg, 1951 *	AZUSC 5670	DW	X	X	X	X	X	X	X	Western Atlantic	1	1	1	1	1	0	0	0	NA	LC

Table 1. Continuation.

Táxon	A	B	C	D	E	F	G	H	I	J	K	L	M	N	O	P	Q	R	S	T
NETTASTOMATIDAE																				
<i>Hoplunnis tenuis</i> Ginsburg, 1951	USNM 444956	DW*	X			X		X		Atlantic	1	1	1	1	1	1	1	1	1	LC
<i>Nettastoma melanura</i> Rafinesque, 1810	NSMT 42438	DW*				X	X			Atlantic	1	1	1	1	1	1	1	1	1	LC
CONGRIDAE																				
<i>Ariosoma anale</i> (Poey, 1860)	NSMT-P-40068	DW*	X					X		Atlantic	1	1	1	1	0	0	0	0	0	NA
<i>Ariosoma balearicum</i> (Delaroche, 1809)	USNM 218913	C	X	X				X		Atlantic	1	1	1	1	1	1	1	1	1	LC
<i>Ariosoma coquettei</i> Smith & Kanazawa, 1977	NSMT-P-40069	C*	X					X		Endemic AOP	0	0	0	1	0	0	0	0	0	N
<i>Ariosoma selenops</i> Reid, 1934	Klautau <i>et al.</i> 2020	DW	X					X		Western Atlantic	1	1	1	1	1	0	0	0	0	LC
<i>Bathycongrus bullisi</i> (Smith & Kanazawa, 1977)	Klautau <i>et al.</i> 2020	DW	X					X		Western Atlantic	0	1	1	0	0	0	0	0	0	NA
<i>Bathycroconger vicinus</i> (Vaillant, 1888)	Klautau <i>et al.</i> 2020	DW*	X					X		Circumglobal	1	1	1	1	1	0	0	0	0	LC
<i>Conger esculentus</i> Poey, 1861	Cervigón <i>et al.</i> 1992	C*	X	X				X		Western Atlantic	1	0	1	1	1	1	1	1	1	LC
<i>Parabathymyrus oregoni</i> Smith & Kanazawa, 1977	USNM 158900	DW*	X					X		Western Atlantic	0	1	1	1	1	0	0	0	0	NA
<i>Paraconger caudilimbatus</i> (Poey, 1867)	Klautau <i>et al.</i> 2020	DW	X						X	Atlantic	1	1	1	0	0	0	0	0	0	N
<i>Paraconger guianensis</i> Kanazawa, 1961	MPEG 35216	C	X	X				X		Western Atlantic	0	0	0	1	1	0	0	0	0	LC
<i>Pseudoplichthys splendens</i> (Lea, 1913)	NSMT-P-40070	DW*	X					X		Atlantic	1	1	1	1	1	0	0	0	0	LC
<i>Rhynchoconger flavus</i> (Goode & Bean, 1896)	MPEG 35737	C	X					X		Western Atlantic	1	1	1	0	0	0	0	0	0	LC
<i>Xenomystax congroides</i> Smith & Kanazawa, 1989	Klautau <i>et al.</i> 2020	DW*				X	X			Atlantic	1	1	1	1	1	0	0	0	0	LC
NEMICHTHYIDAE																				
<i>Avocettina infans</i> (Günther, 1878)	NSTM 40450	DW*				X	X			Circumglobal	1	1	1	1	1	0	0	0	0	LC
<i>Nemichthys scolopaceus</i> Richardson, 1848	NSTM 40061	DW*				X	X			Circumglobal	1	1	1	1	1	1	1	1	1	LC
MORINGUIDAE																				
<i>Neoconger</i> sp. *	Marceniuk <i>et al.</i> , 2019	C	X					X		Endemic AOP	0	0	0	1	0	0	0	0	0	N
SERRIVOMERIDAE																				
<i>Serrivomer beani</i> Gill & Ryder, 1883	NSMT-P-40078	DW*				X	X			Circumglobal	1	1	1	1	1	1	1	1	1	LC
<i>Serrivomer lanceolatooides</i> (Schmidt, 1916)	USNM 315339	DW*				X	X			Circumglobal	1	1	1	0	0	0	0	0	0	LC
<i>Stemnidium hypomelas</i> Gilbert, 1905	Klautau <i>et al.</i> , 2020	DW				X	X			Circumglobal	1	0	0	1	1	1	1	1	1	LC
CLUPEIFORMES																				
PRISTIGASTERIDAE																				
<i>Chirocentrodon bleekeri</i> Poey, 1867	MPEG 35674	C	X			X	X			Western Atlantic	0	0	1	1	1	1	1	1	0	LC
<i>Odontognathus compressus</i> Meek & Hildebrand, 1923	FLMNH 14785	C*	X			X	X			Western Atlantic	0	0	1	1	0	0	0	0	0	N

Table 1. Continuation.

Táxon	A	B	C	D	E	F	G	H	I	J	K	L	M	N	O	P	Q	R	S	T
PRISTIGASTERIDAE																				
<i>Odonotnathus mucronatus</i> Lacepède, 1800	MPEG 35048	C	X	X	X	X	X	X	X	Western Atlantic	0	0	1	1	1	1	1	1	0	LC
<i>Pellona harroweri</i> (Fowler, 1917)	MPEG 35208	C	X	X	X	X	X	X	X	Western Atlantic	0	0	1	1	1	1	1	1	1	LC
ENGRAULIDAE																				
<i>Anchoa filifera</i> (Fowler, 1915) *	MPEG 35122	C	X	X	X	X	X	X	X	Western Atlantic	0	0	1	1	1	1	1	1	0	LC
<i>Anchoa hepsetus</i> (Linnaeus, 1758)	OBIS BR 157	C*	X	X	X	X	X	X	X	Western Atlantic	1	1	1	1	1	1	1	1	1	N
<i>Anchoa januaria</i> (Steindachner, 1879)	HU-Zoo 58746	C	X	X	X	X	X	X	X	Western Atlantic	0	0	0	1	1	1	1	1	1	LC
<i>Anchoa lyolepis</i> (Evermann & Marsh, 1900)	USNM 258295	C	X	X	X	X	X	X	X	Western Atlantic	1	1	1	1	1	1	1	1	0	LC
<i>Anchoa pectoralis</i> Hildebrand, 1943	MCZ 35276	C	X	X	X	X	X	X	X	Western Atlantic	0	0	0	1	1	1	1	1	0	LC
<i>Anchoa spinifer</i> (Valenciennes, 1848)	MPEG 32865	C	X	X	X	X	X	X	X	W Atlantic, E Pacific	0	0	1	1	1	1	1	1	0	LC
<i>Anchovia clupeioides</i> (Swainson, 1839)	MCZ 18044	C	X	X	X	X	X	X	X	Western Atlantic	0	1	1	1	1	1	1	1	0	LC
<i>Anchovia surinamensis</i> (Bleeker, 1865)	MPEG 32997	C	X	X	X	X	X	X	X	Endemic AOP	0	0	0	1	0	0	0	0	0	LC
<i>Anchoviella brevirostris</i> (Günther, 1868)	MCZ 35255	C	X	X	X	X	X	X	X	Western Atlantic	0	0	0	1	1	1	1	1	0	LC
<i>Anchoviella cayennensis</i> (Puyo, 1945)	UF 189087	C	X	X	X	X	X	X	X	Western Atlantic	0	0	0	1	1	1	1	1	0	LC
<i>Anchoviella elongata</i> (Meek & Hildebrand, 1923)	Fonseca & Souza 2006	C	X	X	X	X	X	X	X	Western Atlantic	0	0	1	1	1	0	0	0	0	N
<i>Anchoviella guianensis</i> (Eigenmann, 1912)	CAS 58084	C	X	X	X	X	X	X	X	Western Atlantic	0	0	1	1	0	0	0	0	0	LC
<i>Anchoviella lepidontostole</i> (Fowler, 1911)	MPEG 35240	C	X	X	X	X	X	X	X	Western Atlantic	0	0	0	1	1	1	1	1	0	LC
<i>Cetengraulis edentulus</i> (Cuvier, 1829)	MPEG 32974	C	X	X	X	X	X	X	X	Western Atlantic	0	1	1	1	1	1	1	1	1	LC
<i>Engraulis eurystole</i> (Swain & Meek, 1884)	UF 223947	C*	X	X	X	X	X	X	X	Western Atlantic	1	1	1	1	0	0	0	0	0	LC
<i>Lycengraulis batesii</i> (Günther, 1868)	LBP 21388	C	X	X	X	X	X	X	X	Endemic AOP	0	0	0	1	0	0	0	0	0	LC
<i>Lycengraulis grossidens</i> (Spix & Agassiz, 1829)	MPEG 32017	C	X	X	X	X	X	X	X	Western Atlantic	0	0	1	1	1	1	1	1	1	LC
<i>Pterengraulis atherinooides</i> (Linnaeus, 1766)	MPEG 33003	C	X	X	X	X	X	X	X	Endemic AOP	0	0	0	1	0	0	0	0	0	LC
CLUPEIDAE																				
<i>Etrumeus sadina</i> (Mitchill, 1814)	USNM 159703	C	X	X	X	X	X	X	X	Circumglobal	1	1	1	1	0	0	0	0	0	N
<i>Harengula clupeiola</i> (Cuvier, 1829)	MNHN 1900-0184	C	X	X	X	X	X	X	X	Western Atlantic	0	1	1	1	1	1	1	1	0	LC
<i>Harengula jaguana</i> Poey, 1865	UF 135772	C*	X	X	X	X	X	X	X	Western Atlantic	1	1	1	1	1	1	1	1	1	N
<i>Lile piquitinga</i> (Schreiner & Miranda Ribeiro, 1903) *	MPEG 35023	C	X	X	X	X	X	X	X	Western Atlantic	0	0	1	1	1	1	1	1	0	LC
<i>Opisthonema oglinum</i> (Lesueur, 1818)	AZUSC 5286	C	X	X	X	X	X	X	X	Western Atlantic	1	1	1	1	1	1	1	1	1	LC
<i>Rhinosardinia amazonica</i> (Steindachner, 1879)	MPEG 33161	C	X	X	X	X	X	X	X	Endemic AOP	0	0	0	1	0	0	0	0	0	N

Table 1. Continuation.

Táxon	A	B	C	D	E	F	G	H	I	J	K	L	M	N	O	P	Q	R	S	T
CLUPEIDAE																				
<i>Sardinella aurita</i> Valenciennes, 1847	UF 204292	C*	X	X	X	X	X	X		Atlantic	1	1	1	1	1	1	1	1	1	LC
<i>Sardinella brasiliensis</i> (Steindachner, 1879)	Fig. 2B	C	X	X	X	X	X	X		Western Atlantic	1	1	1	1	1	1	1	1	1	DD
ALEPOCEPHALIFORMES																				
PLATYTROCTIDAE																				
<i>Maulisia maui</i> Parr, 1960	NSMT 101785	DW*		X	X					Circumglobal	0	0	0	1	0	0	0	0	0	LC
<i>Platytrectes apus</i> Günther, 1878	UF 173075	DW*		X	X					Circumglobal	1	1	1	1	0	0	0	0	0	N
ALEPOCEPHALIDAE																				
<i>Alepocephalus agassizii</i> Goode & Bean, 1883	UF 190954	DW*		X	X					Atlantic	1	1	0	1	0	0	0	0	0	N
<i>Talismania antillarum</i> (Goode & Bean, 1896)	UF 190914	DW*		X	X					Circumglobal	1	1	1	1	0	0	0	0	0	N
<i>Talismania homoptera</i> (Vaillant, 1888)	NSMT-P-40085	DW*		X	X					Atlantic	1	1	1	1	0	0	0	0	0	N
<i>Xenodermichthys copei</i> (Gill, 1884)	NSMT-P-40086	DW*		X	X					Circumglobal	1	1	1	1	1	1	1	1	1	LC
SILURIFORMES																				
ARIIDAE																				
<i>Amphiarthus phrygiatus</i> (Valenciennes, 1840)	MPEG 35077	C	X	X				X		Endemic AOP	0	0	0	1	0	0	0	0	0	LC
<i>Amphiarthus rugispinis</i> Valenciennes, 1840	MPEG 30636	C	X*					X		Endemic AOP	0	0	0	1	0	0	0	0	0	LC
<i>Aspistor quadriscutis</i> (Valenciennes, 1840)	MPEG 30662	C	X	X				X		Endemic AOP	0	0	0	1	0	0	0	0	0	VU
<i>Bagre bagre</i> (Linnaeus, 1766)	MPEG 35197	C	X	X				X		Western Atlantic	0	0	1	1	1	1	1	0	0	NT
<i>Cathorops agassizii</i> (Eigenmann & Eigenmann, 1888)	MPEG 30666	C	X*					X		Western Atlantic	0	0	0	1	1	0	0	0	0	LC
<i>Cathorops arenatus</i> (Valenciennes, 1840)	MPEG 30657	C	X*					X		Endemic AOP	0	0	0	1	0	0	0	0	0	LC
<i>Cathorops spixii</i> (Agassiz, 1829)	MPEG 30676	C	X	X				X		Western Atlantic	0	0	0	1	1	1	1	0	0	LC
<i>Notarius grandicassis</i> (Valenciennes, 1840)	MPEG 35204	C	X*	X				X		Endemic AOP	0	0	0	1	0	0	0	0	0	LC
<i>Sciades couma</i> (Valenciennes 1840)	CAS 22460	C	X	X				X		Endemic AOP	0	0	0	1	0	0	0	0	0	DD
<i>Sciades herzbergii</i> (Bloch, 1794)	MPEG 30619	C	X*					X		Western Atlantic	0	0	0	1	1	0	0	0	0	LC
<i>Sciades parkeri</i> (Traill 1832)	MPEG 30688	C	X	X				X		Endemic AOP	0	0	0	1	0	0	0	0	0	VU
<i>Sciades passany</i> (Valenciennes, 1840)	MPEG 30669	C	X*					X		Endemic AOP	0	0	0	1	0	0	0	0	0	LC
<i>Sciades proops</i> (Valenciennes, 1840)	MPEG 30687	C	X	X				X		Western Atlantic	0	0	0	1	1	0	0	0	0	DD
ARGENTINIFORMES																				
ARGENTINIDAE																				
<i>Glossanodon polli</i> Cohen, 1958	USNM 159355	DW		X	X					Western Atlantic	1	1	1	1	0	0	0	0	0	N

Table 1. Continuation.

Táxon	A	B	C	D	E	F	G	H	I	J	K	L	M	N	O	P	Q	R	S	T
ARGENTINIDAE																				
<i>Glossanodon pygmaeus</i> Cohen, 1958	USNM 159350	DW			X	X				Atlantic	0	0	0	1	0	0	0	0	0	LC
BATHYLAGIDAE																				
<i>Dolicholagus longirostris</i> (Maul, 1948)	NMST-P-40089	DW*			X	X				Circumglobal	1	1	1	1	1	1	1	1	1	N
<i>Melanolagus bericoides</i> (Borodin, 1929)	NMST-P-40090	DW*			X	X				Circumglobal	1	1	1	1	0	0	1	1	1	LC
STOMIIFORMES																				
GONOSTOMATIDAE																				
<i>Manducus maderensis</i> (Johnson, 1890)	NMST-P-40091	DW*			X	X				Atlantic	1	1	1	1	1	1	0	0	0	LC
<i>Sigmops elongatus</i> (Günther, 1878)	NMST-P-40095	DW*			X	X				Circumglobal	1	1	1	1	1	1	1	1	1	N
STERNOPTYCHIDAE																				
<i>Argyrolepctus aculeatus</i> Valenciennes, 1850	NMST-P-40096	DW*			X	X				Circumglobal	1	1	1	1	1	1	1	1	1	LC
<i>Argyrolepctus affinis</i> Garman, 1899	NMST-P-40097	DW*			X	X				Circumglobal	1	1	1	1	1	1	0	0	0	LC
<i>Argyrolepctus sladeni</i> Regan, 1908	NMST-P-40098	DW*			X	X				Circumglobal	1	1	1	1	1	1	1	1	1	LC
<i>Polyipnus asteroides</i> Schultz, 1938	FMNH 71609	DW*			X	X				Western Atlantic	1	1	1	0	0	0	0	0	0	N
<i>Sternoptyx diaphana</i> Hermann, 1781	NMST-P-40099	DW*			X	X				Circumglobal	1	1	1	1	1	1	1	1	1	LC
<i>Sternoptyx pseudobscura</i> Baird, 1971	NMST-P-40100	DW*			X	X				Circumglobal	1	1	1	1	1	1	1	1	1	LC
PHOSICHTHYIDAE																				
<i>Ichthyococcus polli</i> Blache, 1964	NMST-P-40094	DW*			X	X				Atlantic	0	0	0	1	0	0	0	0	0	N
<i>Polymetme corythaeola</i> (Alcock, 1898)	NMST-P-40093	DW*			X	X				Circumglobal	1	1	1	1	0	0	0	1	1	N
<i>Yarrella blackfordi</i> Goode & Bean, 1896	NMST-P-40092	DW*			X	X				Atlantic	1	1	1	1	0	0	0	0	0	N
STOMIIDAE																				
<i>Aristostomias grimaldii</i> Zugmayer, 1913	NMST-P-40113	DW*			X	X				Circumglobal	1	1	1	1	0	0	0	1	1	N
<i>Astronesthes macropogon</i> Goodyear & Gibbs, 1970	NMST-P-40103	DW*			X	X				Atlantic	1	1	1	1	1	1	1	1	1	LC
<i>Astronesthes richardsoni</i> (Poey, 1852)	UF 178399	DW*			X	X				Atlantic	1	1	1	1	1	1	1	1	1	N
<i>Borostomias elucens</i> (Brauer, 1906)	NMST-P-40105	DW*			X	X				Circumglobal	1	1	1	1	0	0	0	0	0	N
<i>Borostomias mononema</i> (Regan & Trewavas, 1929)	NMST-P-40106	DW*			X	X				Circumglobal	1	1	1	1	0	0	0	0	0	N
<i>Chauliodus sloani</i> Bloch & Schneider, 1801	NMST-P-40101	DW*			X	X				Circumglobal	1	1	1	1	1	1	1	1	1	LC
<i>Heterophotus ophistoma</i> Regan & Trewavas, 1929	MCZ 59100	DW			X	X				Circumglobal	1	1	1	1	1	0	0	1	1	N
<i>Malacosteus niger</i> Ayres, 1848	NMST-P-40114	DW*			X	X				Circumglobal	1	1	1	1	1	1	1	1	1	LC
<i>Melanostomias biseriatus</i> Regan & Trewavas, 1930	NMST-P-40108	DW*			X	X				Atlantic	1	1	1	1	1	0	0	0	0	N

Table 1. Continuation.

Táxon	A	B	C	D	E	F	G	H	I	J	K	L	M	N	O	P	Q	R	S	T
STOMIIDAE																				
<i>Melanostomias macrophotus</i> Regan & Trewavas, 1930	NMST-P-40109	DW*				X	X			Circumglobal	1	1	1	1	1	1	1	1	N	LC
<i>Melanostomias melanops</i> Brauer, 1902	NMST-P-40107	DW*				X	X			Circumglobal	1	1	1	1	1	1	1	0	N	LC
<i>Photonectes braueri</i> (Zugmayer, 1913)	NMST-P-40111	DW*				X	X			Circumglobal	1	1	1	1	1	1	1	1	N	LC
<i>Photonectes gracilis</i> Goode & Bean, 1896	NMST-P-40112	DW*				X	X			Circumglobal	0	0	1	1	0	0	0	0	N	LC
<i>Stomias affinis</i> Günther, 1887	NSMT-P-40102	DW*				X	X			Circumglobal	1	1	1	1	1	1	1	1	LC	LC
<i>Stomias boa</i> (Risso, 1810)	UF 190902	DW*				X	X			Circumglobal	1	1	0	1	1	1	1	1	N	LC
ATELEPODIFORMES																				
ATELEPODIDAE																				
<i>Ijimaia antillarum</i> Howell Rivero, 1935	USNM 392171	DW	X	X				X		Western Atlantic	1	1	1	1	1	1	1	1	N	LC
AULOPIFORMES																				
SYNODONTIDAE																				
<i>Saurida brasiliensis</i> Norman, 1935 *	UF 136790	DW*	X					X		Atlantic	1	1	1	1	1	1	1	1	LC	LC
<i>Saurida caribbaea</i> Breder, 1927	MPEG 35598	C	X					X		Atlantic	1	1	1	1	1	1	1	1	LC	LC
<i>Saurida normani</i> Longley, 1935	NSMT-P-40123	DW*	X					X		Western Atlantic	1	1	1	1	1	1	0	0	LC	LC
<i>Synodus bondi</i> Fowler, 1939	MPEG 35202	C	X	X				X		Western Atlantic	0	1	1	1	1	1	1	0	LC	LC
<i>Synodus foetens</i> (Linnaeus, 1766)	UF 123655	C	X	X				X		Atlantic	0	1	1	1	1	1	1	0	LC	LC
<i>Synodus intermedius</i> (Spix & Agassiz, 1829)	USNM 398292	C			X*			X		Atlantic	1	1	1	1	1	1	1	0	LC	LC
<i>Synodus poeyi</i> Jordan, 1887	CAS 48800	C			X*			X		Western Atlantic	1	1	1	1	1	1	0	0	LC	LC
<i>Synodus synodus</i> (Linnaeus, 1758)	UF 137001	C			X*			X		Atlantic	1	1	1	1	1	1	0	0	LC	LC
<i>Trachinocephalus myops</i> (Forster, 1801)	MPEG 33634	C	X	X	X			X		Atlantic	1	1	1	1	1	1	1	0	LC	LC
IPNOPIDAE																				
<i>Bathypterois quadrifilis</i> Günther, 1878	NSMT-P-40126	DW*	X					X		Atlantic	1	1	1	1	1	0	0	0	LC	LC
<i>Bathypterois viridensis</i> (Roule, 1916)	NSMT-P-40127	DW*	X					X		Atlantic	1	1	1	1	1	0	0	0	LC	LC
<i>Bathytrophops marionae</i> Mead, 1958	NSMT-P-40128	DW*	X					X		Circumglobal	1	1	1	1	1	0	0	0	LC	LC
CHLOROPHTHALMIDAE																				
<i>Chlorophthalmus brasiliensis</i> Mead, 1958	FMNH 67136	DW	X					X		Western Atlantic	0	1	1	1	1	1	1	1	LC	LC
<i>Parasudis truculentita</i> (Goode & Bean, 1896)	MCZ 66482	DW	X					X		Atlantic	1	1	1	1	1	1	1	1	LC	LC
NOTOSUDIDAE																				
<i>Scopelosaurus smithii</i> Bean, 1925	NSMT-P-40129	DW*				X	X			Circumglobal	1	1	1	1	1	1	0	0	N	LC

Table 1. Continuation.

Taxon	A	B	C	D	E	F	G	H	I	J	K	L	M	N	O	P	Q	R	S	T
PARALEPIDIDAE																				
<i>Dolichosudis fuliginosa</i> Post, 1969	NSMT-P-40154	DW*			X	X				W Atlantic, E Pacific	0	0	0	1	1	0	0	1	LC	LC
<i>Lestidiops affinis</i> (Ege, 1930)	MCZ 66885	DW			X	X				Atlantic	1	1	1	1	1	1	1	1	LC	LC
<i>Lestidiops jayakari</i> (Boulenger, 1889)	MCZ 68083	DW*			X	X				Circumglobal	1	1	1	1	1	1	1	1	LC	LC
<i>Lestidiops mirabilis</i> (Ege, 1933)	NSMT-P-40153	DW*			X	X				Circumglobal	1	0	1	1	1	1	0	0	LC	LC
<i>Lestidium atlanticum</i> Borodin, 1928	NSMT-P-40151	DW*			X	X				Circumglobal	1	1	1	1	1	1	1	1	LC	LC
<i>Lestrolepis intermedia</i> (Poey, 1868)	NSMT-P-40152	DW*			X	X				Circumglobal	1	1	1	1	1	1	1	1	N	LC
<i>Magnisudis atlantica</i> (Krøyer, 1868)	NSMT-P-40150	DW*			X	X				Circumglobal	1	1	1	1	1	0	1	1	LC	LC
<i>Stemonosudis rothschildi</i> Richards, 1967	NSMT-P-40155	DW*			X	X				Circumglobal	1	1	1	1	0	0	0	0	N	LC
ALEPISAUROIDAE																				
<i>Alepisaurus brevirostris</i> Gibbs, 1960	Klautau, et al., 2020	DW			X	X				Circumglobal	1	0	1	1	0	1	1	1	LC	LC
<i>Omosudis lowii</i> Günther, 1887	NSMT-P-40156	DW*			X	X				Circumglobal	1	1	1	1	1	0	0	0	LC	LC
MYCTOPHIFORMES																				
NEOSCOPELIDAE																				
<i>Neosopelus macrolepidotus</i> Johnson, 1863	NSMT-P-40149	DW*			X	X				Circumglobal	1	1	1	1	1	1	1	1	LC	LC
<i>Scopelengys tristis</i> Alcock, 1890	NSMT-P-40148	DW*			X	X				Circumglobal	1	1	1	1	0	0	0	0	NA	LC
MYCTOPHIDAE																				
<i>Bolinichthys supralateralis</i> (Parr, 1928)	NSMT-P-40146	DW*			X	X				Circumglobal	1	1	1	1	1	1	1	1	LC	LC
<i>Centrobranchus nigroocellatus</i> (Günther, 1873)	MCZ 123172	DW			X	X				Circumglobal	1	1	1	1	1	1	1	1	LC	LC
<i>Ceratoscopelus maderensis</i> (Lowe, 1839)	MCZ 122793	DW*			X	X				Atlantic	1	1	1	1	1	0	0	0	NA	LC
<i>Ceratoscopelus uarmingii</i> (Lütken, 1892)	NSMT-P-40147	DW*			X	X				Circumglobal	1	1	1	1	1	1	1	1	LC	LC
<i>Dasy Scopelus obtusirostris</i> (Tåning, 1928)	NSMT-P-40135	DW*			X	X				Circumglobal	0	0	0	1	1	1	1	1	N	N
<i>Diaphus dumerilii</i> (Bleeker, 1856)	MCZ 120089	DW			X	X				Atlantic	1	1	1	1	1	1	1	1	LC	LC
<i>Diaphus fragilis</i> Tåning, 1928	NSMT-P-40140	DW*			X	X				Circumglobal	1	1	1	1	1	1	1	1	LC	LC
<i>Diaphus garmani</i> Gilbert, 1906	NSMT-P-40137	DW*			X	X				Circumglobal	1	1	1	1	1	1	1	1	LC	LC
<i>Diaphus problematicus</i> Parr, 1928	NSMT-P-40138	DW*			X	X				Circumglobal	1	1	1	1	1	1	1	1	LC	LC
<i>Diaphus taaningi</i> Norman, 1930	NSMT-P-40139	DW*			X	X				Circumglobal	1	1	1	1	0	0	0	0	N	DD
<i>Electrona risso</i> (Cocco, 1826)	NSMT-P-40131	DW*			X	X				Circumglobal	1	0	0	1	0	0	0	1	LC	LC
<i>Lampadena luminosa</i> (Garman, 1899)	NSMT-P-40453	DW*			X	X				Circumglobal	1	1	1	1	1	1	1	1	LC	LC
<i>Lampanyctus nobilis</i> Tåning, 1928	NSMT-P-40143	DW*			X	X				Circumglobal	1	1	1	1	1	1	1	0	LC	LC

Table 1. Continuation.

Táxon	A	B	C	D	E	F	G	H	I	J	K	L	M	N	O	P	Q	R	S	T
MYCTOPHIDAE																				
<i>Lampanyctus tenuiformis</i> (Brauer, 1906)	MNHN 1990-1028	DW*			X	X				Circumglobal	1	1	1	1	1	0	0	0	LC	LC
<i>Lampanyctus vadulus</i> Hulley, 1981	NSMT-P-40144	DW*			X	X				Circumglobal	0	0	0	1	1	0	0	0	LC	LC
<i>Lepidophanes guentheri</i> (Goode & Bean, 1896)	MCZ 108648	DW			X	X				Atlantic	1	1	1	1	1	1	1	1	LC	LC
<i>Myctophum nitridulum</i> Garman, 1899	NSMT-P-40134	DW*			X	X				Circumglobal	1	1	1	1	1	1	1	1	LC	LC
<i>Notosopelus resplendens</i> (Richardson, 1845)	MCZ 103815	DW			X	X				Circumglobal	1	1	1	1	1	1	1	1	LC	LC
LAMPRIFORMES																				
TRACHIPTERIDAE																				
<i>Zu cristatus</i> (Bonelli, 1820)	NSMT-P-40246	DW*			X	X				Circumglobal	1	1	1	1	1	1	0	0	NA	LC
POLYMIXIFORMES																				
POLYMIXIIDAE																				
<i>Polymixia lowei</i> Günther, 1859	Klautau, et al., 2020	DW		X			X			Western Atlantic	1	1	1	1	1	1	1	1	LC	LC
<i>Polymixia nobilis</i> Lowe, 1836	Cervigón et al. 1992	DW*		X			X			Atlantic	1	1	1	1	1	1	1	1	LC	LC
ZEIFORMES																				
OREOSOMATIDAE																				
<i>Alloctytus verrucosus</i> (Gilchrist, 1906)	NSMT-P-40249	DW*			X	X				Circumglobal	0	0	0	1	1	1	1	1	LC	LC
<i>Pseudocyttus maculatus</i> Gilchrist, 1906		DW*			X	X				Circumglobal	0	0	0	1	0	0	1	1	N	DD
PARAZENIDAE																				
<i>Cyttopsis rosea</i> (Lowe, 1843)	NSMT-P-40247	DW*			X	X				Circumglobal	1	1	1	1	0	0	0	0	N	LC
GRAMMICOLEPIDIDAE																				
<i>Grammicolepis brachiusculus</i> Poey, 1873	NSMT-P-40251	DW*		X	X		X			Circumglobal	1	1	1	1	1	1	0	0	LC	LC
<i>Xenolepidichthys dalgleishi</i> Gilchrist, 1922	NSMT-P-40252	DW*		X	X		X			Circumglobal	1	1	1	1	1	1	1	1	LC	LC
ZEIDAE																				
<i>Zenopsis conchifer</i> (Lowe, 1852)	Klautau et al., 2020	DW		X	X	X	X			Atlantic	1	1	1	1	1	1	1	1	DD	LC
GADIFORMES																				
MELANONIDAE																				
<i>Melanonus zugmayeri</i> Norman, 1930	NSMT-P-40166	DW*		X			X			Circumglobal	1	1	1	1	1	1	1	1	LC	LC
MACROURIDAE																				
<i>Bathygadus melanobranchus</i> Vaillant, 1888	NSMT-P-40173	DW*		X			X			Atlantic	1	1	1	1	0	0	0	0	N	LC
<i>Coelorinchus caelorhincus</i> (Risso, 1810)	NSMT-P-40176	DW*		X			X			Atlantic	1	1	1	1	0	0	0	0	N	LC

Table 1. Continuation.

Táxon	A	B	C	D	E	F	G	H	I	J	K	L	M	N	O	P	Q	R	S	T
MACROURIDAE																				
<i>Coelorinchus caribbaeus</i> (Goode & Bean, 1885)	NSMT-P-40175	DW*	X			X			X	Western Atlantic	1	1	1	1	1	1	1	1	1	LC
<i>Coelorinchus occa</i> (Goode & Bean, 1885)	NSMT-P-40174	DW*	X			X			X	Atlantic	1	1	1	1	1	1	1	1	1	LC
<i>Gadomus arcuatus</i> (Goode & Bean, 1886)	NSMT-P-40171	DW*	X			X			X	Atlantic	1	1	1	1	1	1	0	0	0	LC
<i>Gadomus longifilis</i> (Goode & Bean, 1885)	NSMT-P-40172	DW*	X			X			X	Atlantic	1	1	1	1	0	0	0	0	0	N
<i>Hymenocephalus italicus</i> Giglioli, 1884	NSMT-P-40177	DW*	X			X			X	Circumglobal	1	1	1	1	1	0	0	0	0	N
<i>Kuronezumia bubonis</i> (Iwamoto, 1974)	NSMT-P-40181	DW*	X			X			X	Circumglobal	0	1	1	1	0	0	0	0	0	N
<i>Macrouroides inflaticeps</i> Smith & Radcliffe, 1912	NSMT-P-40170	DW*	X			X			X	Circumglobal	0	0	0	1	1	1	0	0	0	LC
<i>Malacocephalus laevis</i> (Lowe, 1843)	Klautau et al., 2020	DW	X			X			X	Circumglobal	1	1	1	1	1	1	1	1	1	LC
<i>Malacocephalus occidentalis</i> Goode & Bean, 1885	NSMT-P-40183	DW*	X			X			X	Western Atlantic	1	1	1	1	1	1	1	1	1	DD
<i>Nezumia aequalis</i> (Günther, 1878)	NSMT-P-40178	DW*	X			X			X	Atlantic	1	1	1	1	1	1	1	1	1	LC
<i>Nezumia atlantica</i> (Parr, 1946)	NSMT-P-40182	DW*	X			X			X	Western Atlantic	1	1	1	1	1	1	0	0	0	LC
<i>Nezumia cyrano</i> Marshall & Iwamoto, 1973	NSMT-P-40180	DW*	X			X			X	Western Atlantic	1	1	1	1	0	0	0	0	0	N
<i>Nezumia suilla</i> Marshall & Iwamoto, 1973	NSMT-P-40179	DW*	X			X			X	Western Atlantic	1	1	1	1	1	1	1	1	1	LC
<i>Ventrifossa macropogon</i> Marshall, 1973	UF 117928	DW*	X			X			X	Circumglobal	1	1	1	1	1	1	1	1	1	LC
MORIDAE																				
<i>Gadella imberbis</i> (Vaillant, 1888)	NSMT-P-40165	DW*	X			X			X	Atlantic	1	1	1	1	1	1	1	1	1	LC
<i>Laemonema barbatulum</i> Goode & Bean, 1883	NSMT-P-40164	DW*	X			X			X	Western Atlantic	1	1	1	1	1	0	0	0	0	LC
<i>Physiculus fulvus</i> Bean, 1884	USNM 184926	DW	X			X			X	Atlantic	1	1	1	1	1	0	0	0	0	LC
<i>Physiculus kaupi</i> Poey, 1865	USNM 266300	DW	X			X			X	Western Atlantic	1	1	1	1	1	1	1	1	1	N
MERLUCCIIDAE																				
<i>Merluccius albidus</i> (Mitchill, 1818)	NSMT-P-40167	DW*	X			X			X	Western Atlantic	1	1	1	1	0	0	0	0	0	N
<i>Steindachneria argentea</i> Goode & Bean, 1896	NSMT-P-40168	DW*	X			X			X	Western Atlantic	1	1	1	1	1	1	0	0	0	LC
HOLOCENTRIFORMES																				
HOLOCENTRIDAE																				
<i>Corniger spinosus</i> Agassiz, 1831	NSMT-P-40236	C	X*			X			X	Atlantic	1	1	1	1	1	1	1	1	0	LC
<i>Holocentrus ascensionis</i> (Osbeck, 1765)	AZUSC 5180	C	X			X			X	Western Atlantic	1	1	1	1	1	1	1	1	0	LC
<i>Holocentrus rufus</i> (Walbaum, 1792) *	MPEG uncataloged	C	X*			X			X	Western Atlantic	1	1	1	1	0	0	0	0	0	N
<i>Myripristis jacobus</i> Cuvier, 1829	AZUSC 5181	C	X*			X			X	Atlantic	1	1	1	1	1	1	1	1	0	LC
<i>Ostichthys trachypoma</i> (Günther, 1859)	NSMT-P-40237	DW*	X*			X			X	Western Atlantic	1	1	1	1	1	1	0	0	0	NA

Table 1. Continuation.

Táxon	A	B	C	D	E	F	G	H	I	J	K	L	M	N	O	P	Q	R	S	T
Holocentridae																				
<i>Sargocentron bullisi</i> (Woods, 1955)	NSTM-P-40233	C*			X*		X			Western Atlantic	1	1	1	1	1	1	1	1	0	LC
Trachichthyiformes																				
Anoplogastridae																				
<i>Anoplogaster cornuta</i> (Valenciennes, 1833)	NSTM-P-40232	DW*				X	X			Circumglobal	1	1	1	1	1	1	1	1	1	LC
Diretmidae																				
<i>Diretmichthys parini</i> (Post & Quérou, 1981)	NSTM-P-40231	DW*				X	X			Circumglobal	1	1	1	1	1	0	0	0	0	LC
<i>Diretmoides pauciradiatus</i> (Woods, 1973)	NSTM-P-40230	DW*				X	X			Circumglobal	1	1	1	1	1	0	0	0	0	N
<i>Diretmus argenteus</i> Johnson, 1864	Klautau <i>et al.</i> , 2020	DW				X	X			Circumglobal	1	1	1	1	1	0	0	0	0	N
Trachichthyidae																				
<i>Aulotrachichthys argyrophamus</i> (Woods, 1961)	UF 202342	DW				X	X			Western Atlantic	0	0	0	1	1	0	0	0	0	LC
<i>Gephyroberyx darwinii</i> (Johnson, 1866)	Klautau <i>et al.</i> , 2020	DW				X	X			Circumglobal	1	1	1	1	1	1	1	1	1	LC
<i>Hoplostethus occidentalis</i> Woods, 1973	NSTM-P-40228	DW*				X	X			Western Atlantic	1	1	1	1	1	1	1	1	1	LC
Beryciformes																				
Gibberichthyidae																				
<i>Gibberichthys pumilus</i> Parr, 1933	NSMT-P-40240	DW*					X	X		Western Atlantic	1	1	1	1	0	0	0	0	0	LC
Rondeletidae																				
<i>Rondeletia bicolor</i> Goode & Bean, 1895	NSMT-P-40241	DW*				X	X			Circumglobal	1	1	1	1	0	0	0	0	0	LC
<i>Rondeletia loricata</i> Abe & Hotta, 1963	NSMT-P-40242	DW*				X	X			Circumglobal	1	1	1	1	1	1	1	1	1	LC
Barbouriidae																				
<i>Barbourisia rufa</i> Parr, 1945	NSMT-P-40243	DW*					X			Circumglobal	1	1	1	1	1	0	0	0	0	LC
Melamphaidae																				
<i>Melamphaes polylepis</i> Ebeling, 1962	NSMT-P-40238	DW*				X	X			Circumglobal	1	1	1	1	1	0	0	0	0	LC
<i>Scopelogadus mizolepis</i> (Günther, 1878)	NSMT-P-40239	DW*				X	X			Circumglobal	1	1	1	1	1	1	1	1	1	LC
Ophidiiformes																				
Carapidae																				
<i>Snyderidia canina</i> Gilbert, 1905	NSMT-P-40198	DW*					X	X	X	Circumglobal	1	1	1	1	1	0	1	0	1	LC
Ophidiidae																				
<i>Brotula barbata</i> (Bloch & Schneider, 1801)	AZUSC 5056	C				X	X			Atlantic	1	1	1	1	1	1	1	1	1	LC
<i>Dicrolene introniger</i> Goode & Bean, 1883	NSMT-P-40190	DW*				X				Atlantic	1	1	1	1	1	0	0	0	0	N

Table 1. Continuation.

Táxon	A	B	C	D	E	F	G	H	I	J	K	L	M	N	O	P	Q	R	S	T
OPHIDIIDAE																				
<i>Lamprogrammus niger</i> Alcock, 1891	NSMT-P-40191	DW*				X	X			Circumglobal	0	1	1	1	0	0	0	0	N	LC
<i>Lepophidium aporrhox</i> Robins, 1961	UF 234531	C*	X					X		Western Atlantic	0	0	1	1	0	0	0	0	N	LC
<i>Lepophidium breviarbe</i> (Cuvier, 1829)	MPEG 35673	C	X					X		Western Atlantic	0	1	1	1	1	1	1	1	LC	LC
<i>Lepophidium collettei</i> Robins, Robins & Brown, 2012	CAS 48099	C	X					X		Endemic AOP	0	0	0	1	0	0	0	0	N	LC
<i>Lepophidium cultratum</i> Robins, Robins & Brown, 2012	UF 179756	DW*	X					X		Western Atlantic	0	0	0	1	1	0	0	0	N	LC
<i>Lepophidium pheromystax</i> Robins, 1960	USNM 185738	C	X					X		Western Atlantic	1	1	1	1	0	0	0	0	LC	LC
<i>Lepophidium profundorum</i> (Gill, 1863)	NSMT-P-40185	DW*	X					X		Western Atlantic	1	1	1	1	0	0	0	0	N	LC
<i>Lepophidium zophochir</i> Robins, Robins & Brown, 2012	USNM 405927	DW*	X					X		Western Atlantic	0	0	1	1	0	0	0	0	N	LC
<i>Lucibrotula corethromycter</i> Cohen, 1964	NSMT-P-40193	DW*	X					X		Western Atlantic	1	1	1	1	0	0	0	0	N	LC
<i>Monomitopus agassizii</i> (Goode & Bean, 1896)	NSMT-P-40194	DW*				X	X			Western Atlantic	1	1	1	1	1	1	0	0	N	LC
<i>Neobythites braziliensis</i> Nielsen, 1999	UF 204180	DW	X	X						Western Atlantic	0	0	0	1	1	0	0	0	DD	LC
<i>Neobythites gilli</i> Goode & Bean, 1885	NSMT-P-40195	DW*	X					X	X	Western Atlantic	1	1	1	1	0	0	0	0	N	LC
<i>Neobythites monocellatus</i> Nielsen, 1999	NSMT 40195	DW*						X	X	Western Atlantic	0	1	1	1	1	1	0	0	DD	LC
<i>Ophidion dromio</i> Lea & Robins, 2003	KU 29982	C*	X					X	X	Western Atlantic	1	1	1	1	1	0	0	0	N	LC
<i>Ophidion gualanense</i> Lea & Robins, 2003	UF 204008	C*	X					X	X	Endemic AOP	0	0	0	1	0	0	0	0	N	LC
<i>Ophidion holbrookii</i> Putnam, 1874	UF 211572	C	X	X						Western Atlantic	1	1	1	1	1	1	1	0	CR	LC
<i>Otophidium omostigma</i> (Jordan & Gilbert, 1882)	NSMT-P-40189	C*	X					X	X	Western Atlantic	1	1	1	1	0	0	0	0	N	LC
BYTHITIDAE																				
<i>Diplacanthopoma brachysoma</i> Günther, 1887	UF 181664	DW*	X							Western Atlantic	1	1	1	1	1	1	1	0	LC	LC
APHYONIDAE																				
<i>Barathronus bicolor</i> Goode & Bean, 1886	NSMT-P-40197	DW*	X							Western Atlantic	1	1	1	1	0	0	1	0	LC	LC
BATRACHOIDIFORMES																				
BATRACHOIDIDAE																				
<i>Amphichthys cryptocentrus</i> (Valenciennes, 1837)	MPEG uncataloged	C	X	X	X					Western Atlantic	0	1	1	1	1	1	0	0	LC	LC
<i>Batrachoides surinamensis</i> (Bloch & Schneider, 1801)	MPEG 35740	C	X	X	X					Western Atlantic	0	1	1	1	1	1	0	0	LC	LC
<i>Porichthys bathoiketes</i> Gilbert, 1968	NSMT-P-40200	DW*	X							Western Atlantic	0	0	1	1	0	0	0	0	N	N
<i>Porichthys kymosemeum</i> Gilbert, 1968	MZUSP 14820	C	X	X	X					Western Atlantic	0	0	0	1	1	0	0	0	DD	N
<i>Porichthys oculoifrenum</i> Gilbert, 1968	UF 11624	C	X	X						Endemic AOP	0	0	0	1	0	0	0	0	DD	LC

Table 1. Continuation.

Táxon	A	B	C	D	E	F	G	H	I	J	K	L	M	N	O	P	Q	R	S	T	
BATRACHOIDIDAE																					
<i>Porichthys pauciradiatus</i> Caldwell & Caldwell, 1963	TU 40105	C	X	X		X		X	W Atlantic, E Pacific		0	0	1	1	0	0	0	0	0	DD	LC
<i>Porichthys plectrodon</i> Jordan & Gilbert, 1882	MPEG 35806	C	X	X		X		X	Western Atlantic		1	1	1	1	1	1	0	0	0	LC	LC
<i>Thalassophryne maculosa</i> Günther, 1861	OBIS 2635	C*	X	X		X		X	Western Atlantic		0	0	1	1	1	0	0	0	0	N	LC
<i>Thalassophryne nattereri</i> Steindachner, 1876	LBP 21587	C	X	X	X	X		X	Western Atlantic		0	0	1	1	1	1	1	0	0	LC	LC
<i>Thalassophryne punctata</i> Steindachner, 1876	GEA 31*	C	X	X	X	X		X	Western Atlantic		0	0	0	1	1	1	0	0	0	LC	LC
KURTIFORMES																					
APOGONIDAE																					
<i>Apogon americanus</i> Castelnau, 1855	NSMT-P 40281	C		X*		X		X	Western Atlantic		0	1	1	1	1	1	0	0	0	LC	LC
<i>Apogon pseudomaculatus</i> Longley, 1932	USNM 215277	C		X*		X		X	Western Atlantic		1	1	1	1	1	1	0	0	0	LC	LC
<i>Paroncheilus affinis</i> (Poey, 1875)	NSMT-P-40280	C*		X*		X		X	Atlantic		1	1	1	1	1	1	0	0	0	N	LC
<i>Phaeoptyx pigmentaria</i> (Poey, 1860)	NSMT-P 40281	C		X*		X		X	Atlantic		1	1	1	1	1	1	0	0	0	LC	LC
GOBIIFORMES																					
ELEOTRIDAE																					
<i>Dormitator maculatus</i> (Bloch, 1792)	USNM 88288	C	X*			X		X	Western Atlantic		1	1	1	1	1	1	1	1	1	NT	LC
<i>Butis koilomatodon</i> (Bleeker, 1849)	GEA 1657	C	X	X		X		X	exotic species		0	0	0	1	1	1	0	0	0	N	LC
<i>Eleotris amblyopsis</i> (Cope, 1871)	INPA 40675	C	X*			X		X	Western Atlantic		1	1	1	0	0	0	0	0	0	N	LC
<i>Eleotris pisonis</i> (Gmelin, 1789)	GEA 3653	C	X*			X		X	Western Atlantic		1	1	1	1	1	1	1	1	1	LC	LC
<i>Erotelis smaragdus</i> (Valenciennes, 1837)	OBIS BR 977	C	X*			X		X	Western Atlantic		1	1	1	1	1	0	0	0	0	LC	LC
<i>Guavina guavina</i> (Valenciennes, 1837)	MPEG 32774	C	X*			X		X	Western Atlantic		1	1	1	1	1	1	1	1	1	LC	LC
GOBIIDAE																					
<i>Akko dionaea</i> Birdsong & Robins, 1995	USNM 329524	C		X				X	Endemic AOP		0	0	0	1	0	0	0	0	0	LC	DD
<i>Awaous flavus</i> (Valenciennes, 1837)	GEA 2463	C	X*					X	Western Atlantic		0	0	1	1	0	0	0	0	0	DD	LC
<i>Barbulifer enigmaticus</i> Joyeux <i>et al.</i> , 2009	GEA 1619	C		X*				X	Western Atlantic		0	0	0	1	1	1	0	0	0	LC	N
<i>Bathygobius soporator</i> (Valenciennes, 1837)	GEA 1652	C	X	X		X		X	Atlantic		1	1	1	1	1	1	1	1	1	LC	LC
<i>Coryphopterus dicrus</i> Böhlke & Robins, 1960	MZUSP 53119	C		X*		X		X	Western Atlantic		1	1	1	1	1	1	0	0	0	LC	LC
<i>Coryphopterus thrix</i> Böhlke & Robins, 1960	Rocha & Rosa 2001	C		X*		X		X	Western Atlantic		0	1	1	1	1	1	0	0	0	LC	VU
<i>Ctenogobius boleosoma</i> (Jordan & Gilbert, 1882)	GEA 3656	C	X	X		X		X	Western Atlantic		1	1	1	1	1	1	1	1	1	LC	LC
<i>Ctenogobius phenacus</i> (Pezold & Lasala, 1987)	USNM 244153	C*	X	X		X		X	Endemic AOP		0	0	0	1	0	0	0	0	0	N	LC
<i>Ctenogobius saepepallens</i> (Gilbert & Randall, 1968)	ZUEC 4154	C	X	X		X		X	Western Atlantic		1	1	1	1	1	1	1	1	0	LC	LC

Table 1. Continuation.

Táxon	A	B	C	D	E	F	G	H	I	J	K	L	M	N	O	P	Q	R	S	T
GOBIIDAE																				
<i>Ctenogobius smaragdus</i> (Valenciennes, 1837)	CIUFES 2644	C	X	X	X	X	X	X	X	Western Atlantic	1	1	1	1	1	1	1	0	LC	LC
<i>Ctenogobius stigmaticus</i> (Poey, 1860)	OBIS BR 619	C	X	X	X	X	X	X	X	Western Atlantic	1	1	1	1	1	1	1	0	LC	LC
<i>Ctenogobius thoropsis</i> Pezold & Gilbert, 1987	USNM 263436	C	X*	X*	X	X	X	X	X	Endemic AOP	0	0	0	1	0	0	0	0	LC	LC
<i>Evorthodus lyricus</i> (Girard, 1858)	GEA 1662	C	X	X	X	X	X	X	X	Western Atlantic	1	1	1	1	1	1	1	1	LC	LC
<i>Gnatholepis thompsoni</i> Jordan, 1904	Rocha & Rosa 2001	C	X*	X*	X	X	X	X	X	Atlantic	1	1	1	1	1	1	0	0	LC	LC
<i>Gobioides broussonnetii</i> Lacepède, 1800	MZUSP 77702	C	X*	X*	X	X	X	X	X	Western Atlantic	1	1	1	1	1	1	1	1	LC	LC
<i>Gobioides grahamae</i> Palmer & Wheeler, 1955	BMNH 1925.10.28.464.	C	X*	X*	X	X	X	X	X	Western Atlantic	0	0	0	1	1	1	0	0	LC	DD
<i>Gobionellus oceanicus</i> (Pallas, 1770)	MPEG 33222	C	X*	X*	X	X	X	X	X	Atlantic	1	1	1	1	1	1	1	1	LC	LC
<i>Lythrypnus brasiliensis</i> Greenfield, 1988	MZUSP 53107	C	X*	X*	X	X	X	X	X	Western Atlantic	0	0	0	1	1	1	1	0	LC	N
<i>Microdesmus bahianus</i> Dawson, 1973	GEA 454	C	X	X	X	X	X	X	X	Western Atlantic	0	0	1	1	1	1	0	0	LC	LC
<i>Microgobius meeki</i> Evermann & Marsh, 1899	OBIS BR 160	C	X*	X*	X	X	X	X	X	Western Atlantic	0	0	1	1	1	1	1	0	LC	LC
<i>Priolepis dawsoni</i> Greenfield, 1989	AZUSC 5667	C	X*	X*	X	X	X	X	X	Western Atlantic	0	0	1	1	1	1	1	0	LC	LC
<i>Ptereleotris randalli</i> Gasparini, Rocha & Floeter, 2001	Rocha & Rosa 2001*	C	X*	X*	X	X	X	X	X	Western Atlantic	0	0	1	1	1	1	1	0	LC	LC
GRAMMATIDAE																				
<i>Gamma brasiliensis</i> Sazima, Gasparini & Moura, 1998	MZUSP 53053	C	X*	X*	X	X	X	X	X	Western Atlantic	0	0	0	1	1	1	1	0	NT	N
POMACENTRIDAE																				
<i>Abudefduf saxatilis</i> (Linnaeus, 1758)	MZUSP 53177	C	X*	X*	X	X	X	X	X	Circumglobal	1	1	1	1	1	1	1	1	LC	LC
<i>Chromis cyanea</i> (Poey 1860) *	RBF Pers. Obs	C	X*	X*	X	X	X	X	X	Western Atlantic	1	1	1	0	0	0	0	0	LC	LC
<i>Chromis enchrysurus</i> Jordan & Gilbert, 1882	NMNH 273563	C	X*	X*	X	X	X	X	X	Western Atlantic	1	1	1	1	1	1	0	0	LC	LC
<i>Chromis flavicauda</i> (Günther, 1880)	ACF PML Pers. Obs	C	X*	X*	X	X	X	X	X	Western Atlantic	0	0	0	1	1	1	0	0	LC	DD
<i>Chromis multilineata</i> (Guichenot, 1853)	MZUSP 53069	C	X*	X*	X	X	X	X	X	Atlantic	1	1	1	1	1	1	0	0	LC	LC
<i>Chromis scotti</i> Emery, 1968	MZUSP 53095	C	X*	X*	X	X	X	X	X	Western Atlantic	1	1	1	1	0	0	0	0	LC	LC
<i>Microspathodon chrysurus</i> (Cuvier, 1830)	MZUSP 53171	C	X*	X*	X	X	X	X	X	Western Atlantic	1	1	1	1	1	0	0	0	VU	LC
<i>Stegastes pictus</i> (Castelnau, 1855)	MZUSP 53116	C	X*	X*	X	X	X	X	X	Western Atlantic	0	1	1	1	1	1	1	0	LC	N
<i>Stegastes variabilis</i> (Castelnau, 1855)	MZUSP 53210	C	X*	X*	X	X	X	X	X	Circumglobal	1	1	1	1	1	1	0	0	N	N
OPISTOGNATHIDAE																				
<i>Lonchopisthus higmani</i> Mead, 1959	Marceniuk et al., 2019	C	X	X	X	X	X	X	X	Western Atlantic	0	0	1	1	0	0	0	0	N	LC
<i>Opistognathus cuvierii</i> Valenciennes, 1836	CAS 52354	C	X*	X*	X	X	X	X	X	Western Atlantic	0	1	1	1	1	1	0	0	N	N

Table 1. Continuation.

Táxon	A	B	C	D	E	F	G	H	I	J	K	L	M	N	O	P	Q	R	S	T
OPISTOGNATHIDAE																				
<i>Opistognathus lonchurus</i> Jordan & Gilbert, 1882	FMNH 79582	C*			X*	X	X	X	X	Western Atlantic	0	1	1	1	1	1	0	0	LC	LC
<i>Opistognathus</i> sp.	Rocha & Rosa 2001	C			X*	X				Western Atlantic	0	0	0	1	1	1	1	0	N	N
MUGILIFORMES																				
MUGILIDAE																				
<i>Mugil breviostris</i> Miranda Ribeiro, 1915	MPEG 32744	C	X	X	X	X	X	X	X	Western Atlantic	0	0	0	1	1	1	1	1	N	N
<i>Mugil curema</i> Valenciennes, 1836	LBP 21585	C	X	X	X	X	X	X	X	Western Atlantic	1	1	1	1	1	1	1	1	DD	LC
<i>Mugil curvidens</i> Valenciennes, 1836	MZUSP 115080	C	X	X	X	X	X	X	X	Western Atlantic	1	0	1	1	1	1	1	0	DD	LC
<i>Mugil incilis</i> Hancock, 1830	MPEG 33674	C	X	X	X	X	X	X	X	Western Atlantic	0	1	1	1	0	0	0	0	LC	LC
<i>Mugil liza</i> Valenciennes, 1836	MZUSP 67422	C	X	X	X	X	X	X	X	Western Atlantic	1	1	1	1	1	1	1	1	NT	DD
<i>Mugil rubrioculus</i> Harrison, <i>et al.</i> , 2007	MPEG 33025	C	X	X	X	X	X	X	X	Western Atlantic	0	0	1	1	1	1	0	0	DD	N
BLENNIIFORMES																				
TRIPTERYGIIDAE																				
<i>Enneanectes altivelis</i> Rosenblatt, 1960	ACF PML Pers. Obs	C			X*	X	X	X	X	Western Atlantic	1	1	1	1	1	1	0	1	LC	LC
DACTYLOSCOPIIDAE																				
<i>Dactyloscopus foraminosus</i> Dawson, 1982	USNM 221439	C			X*	X				Western Atlantic	0	0	1	1	1	1	0	1	LC	LC
BLENNIIDAE																				
<i>Entomacrodus vomerinus</i> (Valenciennes, 1836)	MCZ 4637	C			X*	X	X	X	X	Western Atlantic	0	0	0	1	1	1	0	0	LC	LC
<i>Lupinoblennius pavai</i> (Pinto, 1958)	GEA 449	C	X*			X				Western Atlantic	0	0	0	1	1	1	1	0	LC	EN
<i>Omobranchius punctatus</i> (Valenciennes, 1836)	GEA 1631	C	X		X	X				exotic species	0	0	1	1	1	1	0	N	LC	LC
<i>Ophioblennius trinitatis</i> Miranda Ribeiro, 1919	Rocha & Rosa*	C			X*	X				Western Atlantic	0	0	0	1	1	1	1	0	LC	LC
<i>Parablennius marmoratus</i> (Poey, 1876)	USNM 42078*	C			X*	X				Western Atlantic	1	1	1	1	1	1	0	1	LC	LC
<i>Scartella cristata</i> (Linnaeus, 1758)	GEA 04212	C			X*	X				Atlantic	1	1	1	1	1	1	1	1	LC	LC
LABRISOMIDAE																				
<i>Malacoctenus zatuari</i> Alfredo Carvalho-Filho <i>et al.</i> , 2020	Rocha & Rosa*	C			X*	X				Western Atlantic	0	0	0	1	1	1	1	0	N	N
<i>Starksia brasiliensis</i> (Gilbert, 1900)	Rocha & Rosa	C			X*	X				Western Atlantic	0	0	0	1	1	1	1	0	LC	LC
<i>Starksia shuiteri</i> (Metzelaar, 1919)	Rocha & Rosa*	C			X*	X				Western Atlantic	0	0	1	1	1	0	0	0	LC	LC
CHAENOPSIDAE																				
<i>Emblemaropsis signifera</i> (Ginsburg, 1942)	Rocha & Rosa*	C			X*	X				Western Atlantic	0	0	1	1	1	1	1	0	N	N

Table 1. Continuation.

Táxon	A	B	C	D	E	F	G	H	I	J	K	L	M	N	O	P	Q	R	S	T
ATHERINIFORMES																				
ATHERINOPSIDAE																				
<i>Atherinella brasiliensis</i> (Quoy & Gaimard, 1825)	MPEG 33236	C	X	X	X	X	X	X	X	Western Atlantic	0	0	1	1	1	1	1	1	1	LC
BELONIFORMES																				
EXOCOETIDAE																				
<i>Cheilopogon cyanopterus</i> (Valenciennes, 1847)	UF 212278	C-O*		X	X	X	X	X	X	Circumglobal	1	1	1	1	1	1	0			LC
<i>Cheilopogon exsiliens</i> (Linnaeus, 1771)	UF 214039	C-O*		X	X	X	X	X	X	Atlantic	1	1	1	1	1	1	0			LC
<i>Cheilopogon melanurus</i> (Valenciennes, 1847) *	MPEG 32900	C-O		X	X	X	X	X	X	Atlantic	1	1	1	1	1	1	0			LC
<i>Exocoetus obtusirostris</i> Günther, 1866	Leopold, 2004	C-O		X	X	X	X	X	X	Circumglobal	1	1	1	1	1	1	1			LC
<i>Exocoetus volitans</i> Linnaeus, 1758	MCZ 156477	C-O		X	X	X	X	X	X	Circumglobal	1	1	1	1	1	1	1			LC
<i>Hirundichthys affinis</i> (Günther, 1866)	UF 213961	C-O*		X	X	X	X	X	X	Atlantic	1	1	1	1	1	0	0			LC
<i>Hirundichthys speculiger</i> (Valenciennes, 1847)	MCZ 156278	C-O		X	X	X	X	X	X	Circumglobal	1	1	1	1	1	1	0			LC
<i>Parexocoetus brachypterus</i> (Richardson, 1846)	MPEG not cataloged	C-O		X	X	X	X	X	X	Atlantic	1	1	1	1	1	1	0			LC
<i>Parexocoetus hillebrandi</i> (Gosse, 1851)	MCZ 156225	C-O		X	X	X	X	X	X	Atlantic	1	1	1	1	1	0	0			N
HEMIRAMPIDAE																				
<i>Euleptorhamphus velox</i> Poey, 1868	MCZ 72070	C-O		X	X	X	X	X	X	Atlantic	1	1	1	1	1	1	1			LC
<i>Hemiramphus balao</i> Lesueur, 1821	Zacardi & Bittencourt 2017	C	X	X	X	X	X	X	X	Atlantic	1	1	1	1	1	1	0			DD
<i>Hemiramphus brasiliensis</i> (Linnaeus, 1758)	HU-Zoo 100314	C	X	X	X	X	X	X	X	Atlantic	1	1	1	1	1	1	0			LC
<i>Hyporhamphus roberti</i> (Valenciennes, 1847)	MPEG 32949	C	X	X	X	X	X	X	X	W Atlantic, E Pacific	1	1	1	1	1	1	0			LC
<i>Hyporhamphus unifasciatus</i> (Ranzani, 1841)	OBIS BR 192	C	X	X	X	X	X	X	X	Circumglobal	1	1	1	1	1	1	1			NT
<i>Oxyporhamphus micropterus</i> (Valenciennes, 1847)	MCZ 60166	C	X	X	X	X	X	X	X	Circumglobal	1	1	1	1	1	1	0			LC
BELONIDAE																				
<i>Ablennes hians</i> (Valenciennes, 1846)	UF 93355	C	X	X	X	X	X	X	X	Circumglobal	1	1	1	1	1	1	1			LC
<i>Platybelone argalus</i> (Lesueur, 1821)	MNHN 2002-0946	C*	X	X	X	X	X	X	X	Circumglobal	1	1	1	1	1	0	0			LC
<i>Strongylura marina</i> (Walbaum, 1792)	MCZ 4680	C	X	X	X	X	X	X	X	Western Atlantic	1	1	1	1	1	1	1			LC
<i>Strongylura timucu</i> (Walbaum, 1792)	MPEG 32847	C	X	X	X	X	X	X	X	Western Atlantic	1	1	1	1	1	1	0			LC
<i>Tylosurus acus</i> (Lacepède, 1803)	MCZ 8816	C	X	X	X	X	X	X	X	Circumglobal	1	1	1	1	1	1	0			LC
<i>Tylosurus crocodilus</i> (Péron & Lesueur, 1821)	Leopold, 2004	C*	X	X	X	X	X	X	X	Circumglobal	1	1	1	1	1	0	0			LC

Table 1. Continuation.

Táxon	A	B	C	D	E	F	G	H	I	J	K	L	M	N	O	P	Q	R	S	T
CYPRINODONTIFORMES																				
ANABLEPIDAE																				
<i>Anableps anableps</i> (Linnaeus, 1758)	MPEG 32754	C	X*		X	X				Western Atlantic	0	0	1	1	1	0	0	0	LC	N
<i>Anableps microlepis</i> Müller & Troschel, 1844	MPEG 32791	C	X*		X	X				Endemic AOP	0	0	0	1	0	0	0	0	LC	N
CARANGIFORMES																				
CORYPHAENIDAE																				
<i>Coryphaena equisetis</i> Linnaeus, 1758	MCZ 166436	C-O			X	X	X			Circumglobal	1	1	1	1	1	1	0		LC	LC
<i>Coryphaena hippurus</i> Linnaeus, 1758	Asano-Filho, 2004	C-O			X	X	X			Circumglobal	1	1	1	1	1	1	0		LC	LC
RACHYCENTRIDAE																				
<i>Rachycentron canadum</i> (Linnaeus, 1766)	MPEG 33667	C			X	X	X			Circumglobal	1	1	1	1	1	1	0		LC	LC
ECHENEIDAE																				
<i>Echeneis naucrates</i> Linnaeus, 1758	MPEG 35641	C			X	X	X			Circumglobal	1	1	1	1	1	1	1		LC	DD
<i>Phtheichthys lineatus</i> (Menzies, 1791)	ROM 71438	C*			X	X				Circumglobal	1	1	1	1	1	1	0		LC	LC
<i>Remora osteochir</i> (Cuvier, 1829)	USNM 383265	C			X	X				Circumglobal	1	1	1	1	1	1	1		LC	LC
<i>Remora remora</i> (Linnaeus, 1758)	GEA 04235	C			X	X				Circumglobal	1	1	1	1	1	1	1		N	LC
CARANGIDAE																				
<i>Alectis ciliaris</i> (Bloch, 1787)	MPEG 35701	C	X		X	X	X			Circumglobal	1	1	1	1	1	1	0		LC	LC
<i>Caranx bartholomaei</i> Cuvier, 1833	MPEG 35098	C	X		X	X	X			Atlantic	1	1	1	1	1	1	0		LC	LC
<i>Caranx crysos</i> (Mitchill, 1815)	AZUSC 5091	C	X		X	X	X			Atlantic	1	1	1	1	1	1	1		LC	LC
<i>Caranx hippos</i> (Linnaeus, 1766)	MPEG 35183	C	X		X	X	X			Atlantic	1	1	1	1	1	1	1		LC	LC
<i>Caranx latus</i> Agassiz, 1831	AZUSC 5060	C	X		X	X	X			Atlantic	1	1	1	1	1	1	1		LC	LC
<i>Caranx lugubris</i> Poey, 1860	MPEG uncataloged	C-O			X	X	X			Circumglobal	1	1	1	1	1	1	0		LC	LC
<i>Caranx ruber</i> (Bloch, 1793)	Rocha & Rosa 2001	C*	X		X	X	X			Atlantic	1	1	1	1	1	1	0		LC	LC
<i>Chloroscombrus chrysurus</i> (Linnaeus, 1766)	MPEG 35654	C	X		X	X	X			Atlantic	1	1	1	1	1	1	1		LC	LC
<i>macarellus</i> (Cuvier, 1833)	Fig. 2D	C			X	X	X			Circumglobal	1	1	1	1	1	1	0		LC	LC
<i>Decapterus punctatus</i> (Cuvier, 1829)	AZUSC 5524	C			X	X	X			Atlantic	1	1	1	1	1	1	0		LC	LC
<i>Decapterus tabl</i> Berry, 1968 *	AZUSC 5516	C			X	X	X			Circumglobal	1	1	1	1	1	1	0		LC	LC
<i>Elagatis bipinnulata</i> (Quoy & Gaimard, 1825)	Rocha & Rosa 2001	C			X	X	X			Circumglobal	1	1	1	1	1	1	0		LC	LC
<i>Hemicaranx amblyrhynchus</i> (Cuvier, 1833)	MPEG 35045	C	X		X	X				Western Atlantic	1	1	1	1	1	1	1		LC	LC
<i>Oligoplites palometa</i> (Cuvier, 1832)	MPEG 32916	C	X		X	X				Western Atlantic	0	0	1	1	1	1	1		LC	LC

Table 1. Continuation.

Táxon	A	B	C	D	E	F	G	H	I	J	K	L	M	N	O	P	Q	R	S	T
CARANGIDAE																				
<i>Oligoplites saliens</i> (Bloch, 1793)	MPEG 35173	C	X	X	X	X	X	X	X	Western Atlantic	0	0	1	1	1	1	1	1	1	LC
<i>Oligoplites saurus</i> (Bloch & Schneider, 1801)	AZUSC 5303	C	X	X	X	X	X	X	X	W Atlantic, E Pacific	1	1	1	1	1	1	1	1	1	LC
<i>Selar crumenophthalmus</i> (Bloch, 1793)	MPEG 35969	C		X	X	X	X	X	X	Circumglobal	1	1	1	1	1	1	1	1	1	LC
<i>Selene brownii</i> (Cuvier, 1816)	AZUSC 5058	C	X	X	X	X	X	X	X	Western Atlantic	0	1	1	1	1	1	0	0	0	LC
<i>Selene setapinnis</i> (Mitchill, 1815)	MPEG 35764	C	X	X	X	X	X	X	X	Western Atlantic	1	1	1	1	1	1	1	1	1	LC
<i>Selene vomer</i> (Linnaeus, 1758)	MPEG 35123	C	X	X	X	X	X	X	X	Western Atlantic	1	1	1	1	1	1	1	1	1	LC
<i>Seriola dumerili</i> (Risso, 1810) *	MPEG uncataloged	C-O		X	X	X	X	X	X	Circumglobal	1	1	1	1	1	1	1	0	0	LC
<i>Seriola rivoliana</i> Valenciennes, 1833 *	MPEG uncataloged	C-O		X	X	X	X	X	X	Circumglobal	1	1	1	1	1	1	1	0	0	LC
<i>Trachinotus carolinus</i> (Linnaeus, 1766)	MPEG 32982	C	X	X	X	X	X	X	X	Western Atlantic	1	1	1	1	1	1	1	1	1	LC
<i>Trachinotus cayennensis</i> Cuvier, 1832	MPEG 34410	C	X	X	X	X	X	X	X	Endemic AOP	0	0	0	1	0	0	0	0	0	DD
<i>Trachinotus falcatus</i> (Linnaeus, 1758)	MPEG 33668	C	X	X	X	X	X	X	X	Atlantic	1	1	1	1	1	1	1	1	1	LC
<i>Trachinotus goodei</i> Jordan & Evermann, 1896	MCZ 23915	C*	X	X	X	X	X	X	X	Western Atlantic	1	1	1	1	1	1	1	1	0	LC
<i>Trachurus lathami</i> Nichols, 1920	UF 211586	C		X	X	X	X	X	X	Western Atlantic	1	1	1	1	1	1	1	1	1	LC
<i>Uraspis secunda</i> (Poey, 1860) *	MPEG uncataloged	C		X	X	X	X	X	X	Circumglobal	1	1	1	1	1	1	1	1	0	LC
ISTIOPHORIFORMES																				
SPHYRAENIDAE																				
<i>Sphyræna barracuda</i> (Edwards, 1771)	Rocha & Rosa 2001	C-O	X	X	X	X	X	X	X	Circumglobal	0	1	1	1	1	1	1	0	0	LC
<i>Sphyræna borealis</i> DeKay, 1842	Moura et al 2016*	C		X	X	X	X	X	X	Western Atlantic	1	1	1	1	1	1	1	1	1	N
<i>Sphyræna guachancho</i> Cuvier, 1829	MPEG 35063	C	X	X	X	X	X	X	X	Atlantic	1	1	1	1	1	1	1	1	1	LC
XIPHIIDAE																				
<i>Xiphias gladius</i> Linnaeus, 1758	Asano-Filho, 2004	C-O		X	X	X	X	X	X	Circumglobal	1	1	1	1	1	1	1	1	1	NT
ISTIOPHORIDAE																				
<i>Istiophorus platypterus</i> (Shaw, 1792)	Asano-Filho, 2004	C-O		X	X	X	X	X	X	Circumglobal	1	1	1	1	1	1	1	1	1	N
<i>Makaira nigricans</i> Lacepède, 1802	Asano-Filho, 2004	C-O		X	X	X	X	X	X	Circumglobal	1	1	1	1	1	1	1	1	1	EN
PLEURONECTIFORMES																				
PARALICHTHYIDAE																				
<i>Ancylopsetta cycloidea</i> Tyler, 1959	ANSP 82633	C*		X	X	X	X	X	X	X Western Atlantic	0	0	1	1	0	0	0	0	0	N
<i>Ancylopsetta dilecta</i> (Goode & Bean, 1883)	NSMT-P-40402	DW*		X	X	X	X	X	X	X Western Atlantic	1	1	1	1	0	0	0	0	0	N
<i>Ancylopsetta kumperae</i> Tyler, 1959	USNM 159620	C		X	X	X	X	X	X	X Western Atlantic	0	0	0	1	1	0	0	0	0	NA

Table 1. Continuation.

Táxon	A	B	C	D	E	F	G	H	I	J	K	L	M	N	O	P	Q	R	S	T
PARALICHTHYIDAE																				
<i>Ancylopsetta ommata</i> (Jordan & Gilbert, 1883)	Uyeno, <i>et al.</i> , 1983	C*	X	X	X	X	X	X	X	Western Atlantic	1	1	0	1	0	0	0	0	N	LC
<i>Citharichthys arenaceus</i> Evermann & Marsh, 1900	MPEG 35148	C	X	X	X	X	X	X	X	Western Atlantic	1	1	1	1	1	1	1	0	LC	LC
<i>Citharichthys cornutus</i> (Günther, 1880)	MPEG 35677	DW	X	X	X	X	X	X	X	Western Atlantic	1	1	1	1	1	1	1	1	LC	LC
<i>Citharichthys macrops</i> Dresel, 1885	AZUSC 5649	C	X	X	X	X	X	X	X	Western Atlantic	1	1	1	1	1	1	0	LC	LC	LC
<i>Citharichthys spilopterus</i> Günther, 1862	AZUSC 5359	C	X	X	X	X	X	X	X	Western Atlantic	1	1	1	1	1	1	1	1	LC	LC
<i>Cyclopsetta chittendeni</i> Bean, 1895	MPEG 35119	C	X	X	X	X	X	X	X	Western Atlantic	0	1	1	1	1	1	0	LC	LC	LC
<i>Cyclopsetta fimbriata</i> (Goode & Bean, 1885) *	Fig. 2F	C	X	X	X	X	X	X	X	Western Atlantic	1	1	1	1	1	1	0	LC	LC	LC
<i>Etropus crossotus</i> Jordan & Gilbert, 1882	AZUSC 5010	C	X	X	X	X	X	X	X	W Atlantic, E Pacific	1	1	1	1	1	1	1	1	LC	LC
<i>Paralichthys brasiliensis</i> (Ranzani, 1842)	MZUSP 72303	C	X	X	X	X	X	X	X	Western Atlantic	0	0	0	1	1	1	1	1	LC	N
<i>Paralichthys tropicus</i> Ginsburg, 1933	NSMT-P-40404	C*	X	X	X	X	X	X	X	Western Atlantic	1	0	1	1	0	0	0	0	N	DD
<i>Syacium gunteri</i> Ginsburg, 1933	GEA 12180	C	X	X	X	X	X	X	X	Western Atlantic	1	1	1	1	1	0	0	0	N	LC
<i>Syacium micrurum</i> Ranzani, 1842	MPEG 35559	C	X	X	X	X	X	X	X	Atlantic	1	1	1	1	1	1	0	LC	LC	LC
<i>Syacium papillosum</i> (Linnaeus, 1758)	AZUSC 5007	C	X	X	X	X	X	X	X	Western Atlantic	1	1	1	1	1	1	1	1	LC	LC
PLEURONECTIDAE																				
<i>Poecilopsetta beanii</i> (Goode, 1881)	UF 214393	DW*	X	X	X	X	X	X	X	Western Atlantic	1	1	1	1	0	0	0	0	N	LC
<i>Poecilopsetta inermis</i> (Breder, 1927)	FMNH 65528	DW	X	X	X	X	X	X	X	Western Atlantic	1	1	1	1	0	0	0	0	NA	LC
BOTHIDAE																				
<i>Bothus lunatus</i> (Linnaeus, 1758)	MZUSP 53034	C	X	X	X	X	X	X	X	Atlantic	1	1	1	1	1	0	0	LC	LC	LC
<i>Bothus maculiferus</i> (Poey, 1860) *	MPEG uncataloged	C	X	X	X	X	X	X	X	Western Atlantic	1	0	1	1	1	1	0	LC	LC	LC
<i>Bothus ocellatus</i> (Agassiz, 1831)	UF 211608	C	X	X	X	X	X	X	X	Western Atlantic	1	1	1	1	1	1	1	1	LC	LC
<i>Bothus robinsi</i> Topp & Hoff, 1972	FMNH 65453	C	X	X	X	X	X	X	X	Western Atlantic	1	1	1	1	1	1	1	1	LC	LC
<i>Chascanopsetta lugubris</i> Alcock, 1894	Klautau <i>et al.</i> , 2020	DW	X	X	X	X	X	X	X	Circumglobal	1	1	1	1	1	0	0	LC	LC	LC
<i>Engyophrys senta</i> Ginsburg, 1933	UF 210964	DW	X	X	X	X	X	X	X	Western Atlantic	1	1	1	1	1	0	0	LC	LC	LC
<i>Monolene antillarum</i> Norman, 1933	UF 211185	DW	X	X	X	X	X	X	X	Western Atlantic	1	1	1	1	1	1	1	1	LC	N
<i>Monolene atrimana</i> Goode & Bean, 1886	UF 211179	DW	X	X	X	X	X	X	X	Western Atlantic	1	1	1	1	1	1	0	N	LC	LC
<i>Trichopsetta caribbaea</i> Anderson & Guthertz, 1967	UF 19309	DW	X	X	X	X	X	X	X	Western Atlantic	0	0	1	1	1	0	0	N	LC	LC
<i>Trichopsetta ventralis</i> (Goode & Bean, 1885)	GEA 12186	C	X	X	X	X	X	X	X	Western Atlantic	1	1	1	1	1	0	0	N	LC	LC
ACHIRIDAE																				
<i>Achirus achirus</i> (Linnaeus, 1758)	MPEG 32952	C	X	X	X	X	X	X	X	Western Atlantic	0	0	0	1	1	1	0	LC	LC	LC

Table 1. Continuation.

Táxon	A	B	C	D	E	F	G	H	I	J	K	L	M	N	O	P	Q	R	S	T
ACHIRIDAE																				
<i>Achirus declivis</i> Chabanaud, 1940	AZUSC 5187	C	X	X					X	Western Atlantic	0	0	1	1	1	1	1	1	1	LC
<i>Achirus lineatus</i> (Linnaeus, 1758)	MPEG 35113	C	X	X					X	Western Atlantic	1	1	1	1	1	1	1	1	1	LC
<i>Apionichthys dumerili</i> Kaup, 1858	AZUSC 4720	C	X*	X					X	Endemic AOP	0	0	0	1	0	0	0	0	0	LC
<i>Gymnachirus nudus</i> Kaup, 1858 *	AZUSC 5481	C		X	X				X	Western Atlantic	1	1	1	1	1	1	1	1	1	LC
<i>Trinectes maculatus</i> (Bloch & Schneider, 1801)	USNM 286989	C*	X	X					X	Western Atlantic	1	1	1	1	1	1	1	0	0	N
<i>Trinectes microphthalmus</i> (Chabanaud, 1928)	GEA 12198	C	X	X					X	Western Atlantic	0	0	0	1	1	1	1	0	0	LC
<i>Trinectes paulistanus</i> (Miranda Ribeiro, 1915)	AZUSC 5642	C	X	X					X	Western Atlantic	0	0	1	1	1	1	1	0	0	LC
CYNOGLOSSIDAE																				
<i>Symphurus diomedeanus</i> (Goode & Bean, 1885)	FMNH 90535	C	X	X					X	Western Atlantic	1	1	1	1	1	1	1	1	1	LC
<i>Symphurus marginatus</i> (Goode & Bean, 1886)	FMNH 86396	DW*		X					X	Western Atlantic	1	1	1	1	1	1	0	0	0	LC
<i>Symphurus oculellus</i> Munroe, 1991	AZUSC 5136	C	X	X					X	Endemic AOP	0	0	0	1	0	0	0	0	0	LC
<i>Symphurus plagusia</i> (Bloch & Schneider, 1801)	AZUSC 5084	C	X	X					X	Western Atlantic	1	1	1	1	1	1	1	0	0	LC
<i>Symphurus tessellatus</i> (Quoy & Gaimard, 1824)	MPEG 35503	C	X	X	X				X	Western Atlantic	0	0	0	1	1	1	1	0	0	LC
SYNGNATHIFORMES																				
SYNGNATHIDAE																				
<i>Bryx dunckeri</i> (Metzelaar, 1919)	GEA 499	C		X*					X	Western Atlantic	1	1	1	1	1	1	1	1	1	LC
<i>Hippocampus erectus</i> Perry, 1810	OBIS BR 1417	C	X	X					X	Western Atlantic	1	1	1	1	1	1	1	1	1	VU
<i>Hippocampus reidi</i> Ginsburg, 1933	AZUSC 5388	C	X	X					X	Western Atlantic	1	1	1	1	1	1	1	1	1	VU
<i>Microphis lineatus</i> (Kaup, 1856)	UESPIPH 124	C	X*						X	Western Atlantic	1	1	1	1	1	1	1	0	0	N
<i>Pseudophallus brasiliensis</i> Dawson, 1974	USNM 212058	C	X*						X	Western Atlantic	0	0	0	1	1	1	1	0	0	DD
<i>Syngnathus caribbaeus</i> Dawson, 1979	NSMT-P-40162	C*	X	X					X	Western Atlantic	0	1	1	1	1	1	0	0	0	N
<i>Syngnathus folletti</i> Herald, 1942	CAS 42762	C*	X	X					X	Western Atlantic	0	0	0	1	1	1	1	1	1	LC
<i>Syngnathus pelagicus</i> Linnaeus, 1758	MPEG 32862	C	X	X					X	Atlantic	1	1	1	1	1	1	1	1	1	LC
AULOSTOMIDAE																				
<i>Aulostomus maculatus</i> Valenciennes, 1841	OBIS BR 175	C		X	X				X	Circumglobal	1	1	1	1	1	1	1	0	0	N
FISTULARIIDAE																				
<i>Fistularia petimba</i> Lacepède, 1803 *	AZUSC 5182	C	X*	X	X	X			X	Circumglobal	1	1	1	1	1	1	1	1	1	LC
<i>Fistularia tabacaria</i> Linnaeus, 1758	AZUSC 5669	C	X*	X	X	X			X	Atlantic	1	1	1	1	1	1	1	1	1	LC

Table 1. Continuation.

Táxon	A	B	C	D	E	F	G	H	I	J	K	L	M	N	O	P	Q	R	S	T
DACTYLOPTERIDAE																				
<i>Dactylopterus volitans</i> (Linnaeus, 1758)	MPEG 35089	C	X	X	X				X	Atlantic	1	1	1	1	1	1	1	1	1	LC
CALLIONYMIFORMES																				
CALLIONYMIDAE																				
<i>Callionymus bairdi</i> Jordan, 1888	USNM 364273	C	X*						X	Atlantic	1	1	1	1	1	1	1	0		LC
<i>Synchiropus agassizii</i> (Goode & Bean, 1888)	UF 204179	DW	X*						X	Western Atlantic	0	1	1	1	1	1	1	1	1	LC
DRACONETTIDAE																				
<i>Centrodraco oregonus</i> (Briggs & Berry, 1959)	MCZ 40506	DW	X						X	Endemic AOP	0	0	0	1	0	0	0	0	DD	N
SCOMBROLABRACIFORMES																				
SCOMBROLABRACIDAE																				
<i>Scombrolabrax heterolepis</i> Roule, 1921	NSMT-P-40349	DW*				X	X			Circumglobal	1	1	1	1	1	1	0	0	LC	LC
SCOMBRIFORMES																				
GEMPYLIDAE																				
<i>Gempylus serpens</i> Cuvier, 1829	Klautau <i>et al.</i> , 2020	DW				X	X			Circumglobal	1	1	1	1	1	1	1	1	LC	LC
<i>Lepidocybium flavobrunneum</i> (Smith, 1843)	Klautau <i>et al.</i> , 2020	DW				X	X			Circumglobal	1	1	1	1	1	1	1	1	LC	LC
<i>Nealotus tripes</i> Johnson, 1865	NSMT-P-40352	DW*				X	X			Circumglobal	1	1	1	1	1	1	1	1	LC	LC
<i>Neopinnula americana</i> (Grey, 1953)	Klautau <i>et al.</i> , 2020	DW				X	X			Western Atlantic	1	1	1	1	1	1	1	1	LC	LC
<i>Nesarchus nasutus</i> Johnson, 1862	NSMT-P-40353	DW*				X	X			Circumglobal	1	1	1	1	1	0	0	0	LC	LC
<i>Promethichthys prometheus</i> (Cuvier, 1832)	NSMT-P-40351	DW*				X	X			Circumglobal	1	1	1	1	1	1	1	1	LC	LC
<i>Ruvettus pretiosus</i> Cocco, 1833	Klautau <i>et al.</i> , 2020	DW				X	X			Circumglobal	1	1	1	1	1	1	0	0	LC	LC
TRICHIURIDAE																				
<i>Benthodesmus tenuis</i> (Günther, 1877)	NSMT-P-40357	DW*				X	X			Circumglobal	1	1	1	1	1	1	1	1	LC	LC
<i>Lepidopus altifrons</i> Parin & Collette, 1993	FMNH 64493	DW*				X	X			Western Atlantic	1	1	1	1	1	1	1	1	LC	LC
<i>Trichiurus lepturus</i> Linnaeus, 1758	MPEG 35189	C	X	X	X	X	X	X	X	Circumglobal	1	1	1	1	1	1	1	1	LC	LC
SCOMBRIDAE																				
<i>Acanthocybium solandri</i> (Cuvier, 1832)	Marceuiuk <i>et al.</i> , 2019	C-O				X	X			Circumglobal	1	1	1	1	1	1	0	0	LC	LC
<i>Auxis thazard</i> (Lacepède, 1800)	Asano-Filho, 2004	C				X	X			Circumglobal	1	1	1	1	1	1	1	1	LC	LC
<i>Euthynnus alletteratus</i> (Rafinesque, 1810) *	Fig. 2J	C			X	X	X			Atlantic	1	1	1	1	1	1	0	0	LC	LC
<i>Katsuwonus pelamis</i> (Linnaeus, 1758) *	Fig. 2E	C-O			X	X				Circumglobal	1	1	1	1	1	1	1	1	LC	LC
<i>Sarda sarda</i> (Bloch, 1793)	Asano-Filho, 2004	C			X	X				Circumglobal	1	1	1	1	1	1	1	1	LC	LC

Table 1. Continuation.

Táxon	A	B	C	D	E	F	G	H	I	J	K	L	M	N	O	P	Q	R	S	T
SCOMBRIDAE																				
<i>Scomber colias</i> Gmelin, 1789	NSMT-P 40359	C*			X	X				Circumglobal	1	1	1	1	1	1	1	1	1	LC
<i>Scomberomorus brasiliensis</i> Collette et al., 1978	MPEG 35108	C			X	X				Western Atlantic	0	0	1	1	1	1	1	1	1	LC
<i>Scomberomorus cavalla</i> (Cuvier, 1829)	AZUSC 5012	C			X	X	X			Western Atlantic	1	1	1	1	1	1	1	0	0	LC
<i>Scomberomorus regalis</i> (Bloch, 1793)	Asano-Filho, 2004	C			X	X	X			Western Atlantic	1	1	1	1	1	1	0	0	0	LC
<i>Thunnus alalunga</i> (Bonnaterre, 1788)	Asano-Filho, 2004	C-O			X	X				Circumglobal	1	1	1	1	1	1	0	0	0	LC
<i>Thunnus albacares</i> (Bonnaterre, 1788)	Asano-Filho, 2004	C-O			X	X				Circumglobal	1	1	1	1	1	1	0	0	0	LC
<i>Thunnus atlanticus</i> (Lesson, 1831)	Asano-Filho, 2004	C-O			X	X				Western Atlantic	1	1	1	1	1	1	0	0	0	LC
<i>Thunnus obesus</i> (Lowe, 1839) *	Fig. 2I	C-O			X	X				Circumglobal	1	1	1	1	1	1	0	0	0	NT
NOMEIDAE																				
<i>Cubiceps pauciradiatus</i> Günther, 1872	NSMT-P-40365	DW*			X	X				Circumglobal	1	1	1	1	1	1	1	1	1	LC
<i>Psenes cyanophrys</i> Valenciennes, 1833	NSMT-P-40367-8	DW*			X	X				Circumglobal	1	1	1	1	1	1	1	1	1	LC
<i>Psenes maculatus</i> Lütken, 1880	NSMT-P-40366	DW*			X	X				Circumglobal	1	1	1	1	1	0	0	0	0	NA
<i>Psenes pellucidus</i> Lütken, 1880	NSMT-P-40369	DW*			X	X				Circumglobal	1	1	1	1	1	0	0	0	0	N
ARIOMMATIDAE																				
<i>Ariomma bondi</i> Fowler, 1930	Klautau et al., 2020	DW			X	X				Atlantic	1	1	1	1	1	1	1	1	1	LC
<i>Ariomma melana</i> (Ginsburg, 1954)	Klautau et al., 2020	DW			X	X				Atlantic	1	1	1	1	1	1	1	1	1	LC
<i>Ariomma regulus</i> (Poey, 1868)	NSMT-P-40370	C*			X	X				Western Atlantic	1	1	1	1	0	0	0	0	0	N
STROMATEIDAE																				
<i>Peprilus crenulatus</i> Cuvier, 1829	MPEG 35600	C	X		X	X				Western Atlantic	0	0	1	1	1	1	1	1	1	LC
<i>Peprilus xanthurus</i> (Quoy & Gaimard, 1825)	MPEG 35778	C	X		X	X				Western Atlantic	0	0	1	1	1	1	1	1	1	LC
TRACHINIFORMES																				
CHIASMODONTIDAE																				
<i>Pseudoscopelus altipinnis</i> Parr, 1933	NSMT-P-40346	DW*			X	X				Circumglobal	1	1	1	1	1	1	1	1	1	LC
<i>Pseudoscopelus scriptus</i> Lütken, 1892	NSMT-P-40345	DW*			X	X				Atlantic	1	1	1	1	1	0	0	0	0	LC
PERCOPHIDAE																				
<i>Bembrops anatirostris</i> Ginsburg, 1955	NSMT-P-40347	DW*		X					X	Western Atlantic	1	1	1	1	1	0	0	0	0	N
URANOSCOPIIDAE																				
<i>Astrosopus ygraecum</i> (Cuvier, 1829)	OBIS BR 61	C	X	X	X				X	Western Atlantic	1	1	1	1	1	1	1	1	1	LC

Table 1. Continuation.

Táxon	A	B	C	D	E	F	G	H	I	J	K	L	M	N	O	P	Q	R	S	T
LABRIFORMES																				
LABRIDAE																				
<i>Bodianus pulchellus</i> (Poey, 1860)	Rocha & Rosa 2001	C			X*	X				Western Atlantic	1	1	1	1	1	1	1	0	LC	LC
<i>Bodianus rufus</i> (Linnaeus, 1758)	Rocha & Rosa 2001	C			X*	X				Western Atlantic	1	1	1	1	1	1	1	0	LC	LC
<i>Clepticus brasiliensis</i> Heiser, Moura & Robertson, 2000	Rocha & Rosa 2001	C			X	X	X			Western Atlantic	0	0	0	1	1	1	1	0	LC	N
<i>Decodon puellaris</i> (Poey, 1860)	USNM 185052	C			X*	X				Western Atlantic	1	1	1	1	1	1	1	0	LC	LC
<i>Halichoeres bivittatus</i> (Bloch, 1791)	Rocha & Rosa 2001	C			X*	X				Western Atlantic	1	1	1	1	1	1	1	0	LC	LC
<i>Halichoeres brasiliensis</i> (Bloch, 1791)	MZUSP 53170	C			X*	X				Western Atlantic	0	0	0	1	1	1	1	0	LC	DD
<i>Halichoeres caudalis</i> (Poey, 1860)	NSMT-P-40340	C*			X*	X				Western Atlantic	1	1	1	0	0	0	0	0	N	LC
<i>Halichoeres dimidiatus</i> (Agassiz, 1831) *	Rocha & Rosa 2001	C			X*	X				Western Atlantic	0	0	0	1	1	1	1	0	LC	LC
<i>Halichoeres penrosei</i> Starks, 1913	Rocha & Rosa 2001	C			X*	X				Western Atlantic	0	0	0	1	1	1	1	0	N	LC
<i>Halichoeres poeyi</i> (Steindachner, 1867)	Rocha & Rosa 2001	C			X*	X				Western Atlantic	1	1	1	1	1	1	1	0	LC	LC
<i>Thalassoma noronhanum</i> (Boulenger, 1890)	Rocha & Rosa 2001	C			X*	X				Western Atlantic	0	0	1	1	1	1	1	0	LC	LC
<i>Xyrichtys incandescens</i> Edwards & Lubbock, 1981	Rocha & Rosa 2001	C			X	X				Western Atlantic	0	0	0	1	1	0	0	0	LC	LC
<i>Xyrichtys martinicensis</i> Valenciennes, 1840	Rocha & Rosa 2001	C			X*	X				Western Atlantic	0	1	1	1	0	0	0	0	N	LC
<i>Xyrichtys novacula</i> (Linnaeus, 1758)	Rocha & Rosa 2001	C			X	X				Atlantic	0	1	1	1	1	1	1	0	LC	LC
<i>Xyrichtys splendens</i> Castelnau, 1855	Moura <i>et al.</i> 2016	C			X*	X				Western Atlantic	0	0	1	1	1	1	1	0	LC	LC
SCARIDAE																				
<i>Cryptotomus roseus</i> Cope, 1871	FMNH 67970	C			X	X				Atlantic	1	1	1	1	1	1	1	0	LC	LC
<i>Nicholsina usta</i> (Valenciennes, 1840)	Rocha & Rosa 2001	C			X	X				Western Atlantic	1	1	1	1	1	1	1	0	LC	LC
<i>Scarus trispinosus</i> Valenciennes, 1840	Rocha & Rosa 2001	C			X*	X				Western Atlantic	0	0	0	1	1	1	1	0	VU	DD
<i>Scarus zelindae</i> Moura, Figueiredo & Sazima, 2001	Rocha & Rosa 2001	C			X*	X				Western Atlantic	0	0	0	1	1	1	1	0	EN	EN
<i>Sparisoma amplum</i> (Ranzani, 1841)	Rocha & Rosa 2001	C			X*	X				Western Atlantic	0	0	1	1	1	1	1	0	NT	LC
<i>Sparisoma axillare</i> (Steindachner, 1878)	ZUEC-PIS 4163	C			X*	X				Western Atlantic	0	0	1	1	1	1	1	0	VU	DD
<i>Sparisoma frondosum</i> (Agassiz, 1831) *	AZUSC 5185	C			X*	X				Western Atlantic	0	0	1	1	1	1	1	0	VU	DD
<i>Sparisoma radians</i> (Valenciennes, 1840)	Rocha & Rosa 2001	C			X*	X				Western Atlantic	1	1	1	1	1	1	1	0	LC	LC
PERCIFORMES																				
CENTROPOMIDAE																				
<i>Centropomus ensiferus</i> Poey, 1860	MPEG 35060	C			X	X				Western Atlantic	0	1	1	1	1	1	1	0	LC	LC
<i>Centropomus irae</i> Carvalho-Filho <i>et al.</i> , 2019	MPEG 33322	C			X	X				Endemic AOP	0	0	0	1	0	0	0	0	N	N

Table 1. Continuation.

Táxon	A	B	C	D	E	F	G	H	I	J	K	L	M	N	O	P	Q	R	S	T
CENTROPOMIDAE																				
<i>Centropomus parallelus</i> Poey, 1860	LBP 21691	C	X	X	X	X	X	X	X	Western Atlantic	0	1	1	1	1	1	1	1	1	LC
<i>Centropomus pectinatus</i> Poey, 1860	Fig. 2H	C	X	X				X	X	Western Atlantic	0	1	1	1	1	1	1	0	1	LC
<i>Centropomus undecimalis</i> (Bloch, 1792)	MPEG 30609	C	X	X	X	X	X	X	X	Western Atlantic	1	1	1	1	1	1	1	1	1	LC
GERREIDAE																				
<i>Diapterus auratus</i> Ranzani, 1840	AZUSC 5626	C	X	X	X	X	X	X	X	Western Atlantic	1	1	1	1	1	1	1	1	1	LC
<i>Diapterus rhombeus</i> (Cuvier, 1829)	MPEG 35191	C	X	X	X	X	X	X	X	Western Atlantic	0	1	1	1	1	1	1	1	1	LC
<i>Eucinostomus argenteus</i> Baird & Girard, 1855	AZUSC 5628	C	X	X	X	X	X	X	X	Western Atlantic	1	1	1	1	1	1	1	1	1	LC
<i>Eucinostomus gula</i> (Quoy & Gaimard, 1824)	AZUSC 5529	C	X	X	X	X	X	X	X	Western Atlantic	1	1	1	1	1	1	1	1	1	LC
<i>Eucinostomus harengulus</i> Goode & Bean, 1879	FMNH 88104	C	X	X	X	X	X	X	X	Western Atlantic	1	1	1	1	1	1	1	0	1	LC
<i>Eucinostomus havana</i> (Nichols, 1912)	OBIS BR 1054	C	X	X	X	X	X	X	X	Western Atlantic	0	1	1	1	1	1	1	0	1	LC
<i>Eucinostomus jonesii</i> (Günther, 1879)	INPA-ICT 023864	C	X	X	X	X	X	X	X	Western Atlantic	1	1	1	1	1	1	1	0	1	LC
<i>Eucinostomus lefroyi</i> (Goode, 1874)	UF 215838	C	X	X	X	X	X	X	X	Western Atlantic	1	1	1	1	1	1	1	1	1	LC
<i>Eucinostomus melanopterus</i> (Bleeker, 1863)	FMNH 92648	C	X	X	X	X	X	X	X	Western Atlantic	1	1	1	1	1	1	1	1	1	LC
<i>Eugerris brasiliensis</i> (Valenciennes, 1830)	MZUSP 61442	C	X	X	X	X	X	X	X	Western Atlantic	0	1	1	1	1	1	1	1	1	LC
<i>Gerres cinereus</i> (Walbaum, 1792)	Leopold, 2004	C*	X	X	X	X	X	X	X	Western Atlantic	1	1	1	1	1	1	1	0	1	LC
HOWELLIDAE																				
<i>Howella brodiei</i> Ogilby, 1899	NSMT-P-40256	DW*						X	X	Circumglobal	1	1	1	1	1	1	0	1	1	LC
ACROPOMATIDAE																				
<i>Caratibops trispinosus</i> (Mochizuki & Sano, 1984)	NSMT-P 21426	DW*						X	X	Western Atlantic	1	1	1	0	0	0	0	0	0	N
<i>Parascombrops spinosus</i> (Schultz, 1940)	NSMT-P-40258	DW*						X	X	Western Atlantic	1	1	1	1	1	1	1	1	1	N
<i>Synagrops bellus</i> (Goode & Bean, 1896)	NSMT-P-40257	DW*						X	X	Atlantic	1	1	1	1	1	1	1	1	1	N
SYMPHYSANODONTIDAE																				
<i>Symphysanodon berryi</i> Anderson, 1970	REVIZEE specie's list	DW						X	X	Atlantic	1	1	1	0	0	0	0	0	0	N
EPIGONIDAE																				
<i>Epigonus macrops</i> (Brauer, 1906)	NSMT-P-40285	DW*						X	X	Circumglobal	1	1	1	0	0	0	0	0	0	N
<i>Epigonus occidentalis</i> Goode & Bean, 1896 *	AZUSC 5671	DW						X	X	Western Atlantic	1	1	1	0	0	1	1	1	1	LC
<i>Epigonus pandionis</i> (Goode & Bean, 1881)	NSMT-P-40283-4	DW*						X	X	Atlantic	1	1	1	0	0	0	0	0	0	N
MULLIDAE																				
<i>Mullidichthys martinicus</i> (Cuvier, 1829)	MNRJ 18230	C						X*	X	Atlantic	1	1	1	1	1	1	1	0	1	LC

Table 1. Continuation.

Táxon	A	B	C	D	E	F	G	H	I	J	K	L	M	N	O	P	Q	R	S	T
MULLIDAE																				
<i>Mullus argentinae</i> Hubbs & Marini, 1933	FMNH 64778	C		X	X	X	X	X		Western Atlantic	0	0	0	1	1	1	1	1	N	LC
<i>Mullus auratus</i> Jordan & Gilbert, 1882	NSMT-P-40443	C*		X						Western Atlantic	1	1	1	0	0	0	0	0	LC	N
<i>Pseudupeneus maculatus</i> (Bloch, 1793)	MPEG uncatalogated	C		X	X	X	X	X		Western Atlantic	1	1	1	1	1	1	0	0	LC	LC
<i>Upeneus parvus</i> Poey, 1852	AZUSC 5445	C		X						Western Atlantic	1	1	1	1	1	1	1	1	LC	LC
PEMPHERIDAE																				
<i>Pempheris schomburgkii</i> Müller & Troschel, 1848	Rocha & Rosa 2001	C		X*						Western Atlantic	1	1	1	1	1	1	0	0	LC	LC
BATHYCLUPEIDAE																				
<i>Neobathylupea argentea</i> (Goode & Bean, 1896)	NSTM-P-40323	DW*				X	X			Western Atlantic	1	1	1	0	0	0	0	0	N	LC
KYPHOSIDAE																				
<i>Kyphosus sectatrix</i> (Linnaeus, 1758)	Rocha & Rosa 2001	C		X*						Atlantic	1	1	1	1	1	1	0	0	LC	LC
<i>Kyphosus vaigiensis</i> (Quoy & Gaimard, 1825)	MPEG 35156	C		X*						Circumglobal	1	1	1	1	1	1	0	0	N	LC
SERRANIDAE																				
<i>Alphestes afer</i> (Bloch, 1793)	MPEG 35142	C		X	X	X	X	X		Western Atlantic	1	1	1	1	1	1	0	0	LC	LC
<i>Anthias asperilinguis</i> Günther, 1859	Klautau <i>et al.</i> , 2020	DW		X*						Western Atlantic	0	0	1	1	1	1	0	0	LC	LC
<i>Anthias nicholisi</i> Firth, 1933	Klautau <i>et al.</i> , 2020	DW		X*						Western Atlantic	1	1	1	0	0	0	0	0	LC	LC
<i>Baldwinella aureorubens</i> (Longley, 1935)	NSMT-P 40274*	DW*		X*						Western Atlantic	1	1	1	0	0	0	0	0	N	LC
<i>Baldwinella vivanus</i> (Jordan & Swain, 1885)	USNM 290061	DW*		X*						Western Atlantic	1	1	1	1	1	0	0	0	LC	LC
<i>Bathyanthias cubensis</i> (Schultz, 1958)	UF 3570	DW*		X*						Western Atlantic	0	0	0	1	1	0	0	0	N	LC
<i>Cephalopholis cruentata</i> (Lacepède, 1802)	NSMT-P-40265	C*		X*						Western Atlantic	1	1	1	0	0	0	0	0	N	LC
<i>Cephalopholis fulva</i> (Linnaeus, 1758)	MPEG uncatalogated	C		X*						Western Atlantic	1	1	1	1	1	1	0	0	LC	LC
<i>Dermatolepis inermis</i> (Valenciennes, 1833) *	MPEG uncatalogated	C		X	X	X	X	X		Western Atlantic	1	1	1	1	1	1	0	0	DD	DD
<i>Diplectrum bivittatum</i> (Valenciennes, 1828)	USNM 364322	C		X	X	X	X	X		Western Atlantic	1	1	1	1	1	1	0	0	LC	LC
<i>Diplectrum formosum</i> (Linnaeus, 1766)	UF 213438	C		X	X	X	X	X		Western Atlantic	1	1	1	1	1	1	0	0	LC	LC
<i>Diplectrum radiale</i> (Quoy & Gaimard, 1824)	MPEG 35622	C		X	X	X	X	X		Western Atlantic	0	1	1	1	1	1	0	0	LC	LC
<i>Epinephelus adscensionis</i> (Osbeck, 1765)	Leopold, 2004	C		X*						Atlantic	1	1	1	1	1	1	0	0	DD	LC
<i>Epinephelus itajara</i> (Lichtenstein, 1822)	MPEG 35082	C		X	X	X	X	X		Atlantic	1	1	1	1	1	1	0	0	CR	VU
<i>Epinephelus morio</i> (Valenciennes, 1828)	AZUSC 5428	C		X	X	X	X	X		Atlantic	1	1	1	1	1	1	1	1	VU	VU
<i>Epinephelus striatus</i> (Bloch, 1792)	USNM 290033	C*		X*						Western Atlantic	1	1	1	0	0	0	0	0	N	CR
<i>Hemanthias leptus</i> (Ginsburg, 1952)	NSMT-P-40275	DW*		X	X	X	X	X		Western Atlantic	1	1	1	1	0	0	0	0	N	LC

Table 1. Continuation.

Táxon	A	B	C	D	E	F	G	H	I	J	K	L	M	N	O	P	Q	R	S	T
SERRANIDAE																				
<i>Hyporthodus flavolimbatus</i> Poey, 1865 *	Fig. 2C	C	X	X	X	X	X	X	X	Western Atlantic	1	1	1	1	1	1	0	DD	VU	
<i>Hyporthodus mystacinus</i> (Poey, 1852)	USNM 187080	DW*	X*	X	X	X	X	X	X	W Atlantic, E Pacific	1	1	1	0	0	0	DD	LC		
<i>Hyporthodus nigritus</i> (Holbrook, 1855)	NSMT 40977	C	X	X	X	X	X	X	X	Western Atlantic	1	1	1	1	1	0	EN	NT		
<i>Hyporthodus niveatus</i> (Valenciennes, 1828)	AZUSC 5583	DW	X	X	X	X	X	X	X	Western Atlantic	1	1	1	1	1	1	VU	VU		
<i>Mycteroperca bonaci</i> (Poey, 1860)	MZUSP 53192	C	X	X	X	X	X	X	X	Western Atlantic	1	1	1	1	1	0	VU	NT		
<i>Mycteroperca cidi</i> Cervigón, 1966	NSMT-P-40266	C*	X*	X	X	X	X	X	X	Western Atlantic	1	1	1	1	1	0	N	DD		
<i>Mycteroperca interstitialis</i> (Poey, 1860) *	MPEG uncatalogated	C	X*	X	X	X	X	X	X	Western Atlantic	1	1	1	1	1	0	VU	VU		
<i>Mycteroperca phenax</i> Jordan & Swain, 1884 *	MPEG uncatalogated	C	X*	X	X	X	X	X	X	Atlantic	1	1	1	0	0	0	N	DD		
<i>Mycteroperca tigris</i> (Valenciennes, 1833)	MCZ 10148	C	X*	X	X	X	X	X	X	Western Atlantic	1	1	1	1	1	0	DD	DD		
<i>Mycteroperca venenosa</i> (Linnaeus, 1758)	MZUSP 53195	C	X*	X	X	X	X	X	X	Western Atlantic	1	1	1	1	1	0	DD	NT		
<i>Paralabrax dewegeri</i> Metzelaar, 1919	UF 165481	C	X	X	X	X	X	X	X	Western Atlantic	0	0	1	1	1	0	0	LC	LC	
<i>Paranthias furcifer</i> (Valenciennes, 1828)	Moura et al 2016	C	X	X	X	X	X	X	X	Atlantic	1	1	1	1	1	0	LC	LC		
<i>Pronotogrammus martinicensis</i> (Guichenot, 1868)	FMNH 70677	C	X*	X	X	X	X	X	X	Western Atlantic	1	1	1	1	1	1	LC	LC		
<i>Pseudogramma gregoryi</i> (Breder, 1927)	Moura et al 2016	C	X*	X	X	X	X	X	X	Western Atlantic	1	1	1	1	1	0	LC	LC		
<i>Rypticus bistrispinus</i> (Mitchill, 1818)	UF 211487	C	X*	X	X	X	X	X	X	Western Atlantic	1	1	1	1	1	0	LC	LC		
<i>Rypticus randalli</i> Courtenay, 1967	MZUSP 48036	C	X	X	X	X	X	X	X	Western Atlantic	1	1	1	1	1	0	LC	LC		
<i>Rypticus saponaceus</i> (Bloch & Schneider, 1801)	MZUSP 53028	C	X	X	X	X	X	X	X	Atlantic	1	1	1	1	1	0	LC	LC		
<i>Serranus annularis</i> (Günther, 1880)	UF 204733	C*	X*	X	X	X	X	X	X	Western Atlantic	1	1	1	1	1	0	LC	LC		
<i>Serranus atrobranchus</i> (Cuvier, 1829)	CAS 48428	C	X	X	X	X	X	X	X	Western Atlantic	1	1	1	1	1	1	LC	LC		
<i>Serranus baldwini</i> (Evermann & Marsh, 1899)	UF 211603	C	X*	X	X	X	X	X	X	Western Atlantic	1	1	1	1	1	0	LC	LC		
<i>Serranus flaviventris</i> (Cuvier, 1829)	AZUSC 5103	C	X	X	X	X	X	X	X	Western Atlantic	1	0	1	1	1	1	0	LC	LC	
<i>Serranus notospilus</i> Longley, 1935	AZUSC 5526	DW	X*	X	X	X	X	X	X	Western Atlantic	1	1	1	1	1	0	N	LC		
<i>Serranus phoebe</i> Poey, 1851	UF 211502	C	X*	X	X	X	X	X	X	Western Atlantic	1	1	1	1	1	0	LC	LC		
POMATOMIDAE																				
<i>Pomatomus saltatrix</i> (Linnaeus, 1766)	AZUSC 5347	C	X	X	X	X	X	X	X	Circumglobal	1	1	1	1	1	1	1	NT	VU	
BRAMIDAE																				
<i>Brama brama</i> (Bonnaterre, 1788)	Klautau et al., 2020	DW	X	X	X	X	X	X	X	Atlantic	1	1	1	1	1	1	1	LC	LC	
<i>Brama caribbea</i> Mead, 1972	NSTM-P-40301	DW*	X	X	X	X	X	X	X	Western Atlantic	1	1	1	1	1	1	1	LC	LC	

Table 1. Continuation.

Táxon	A	B	C	D	E	F	G	H	I	J	K	L	M	N	O	P	Q	R	S	T
PRIACANTHIDAE																				
<i>Cookeolus japonicus</i> (Cuvier, 1829)	Klautau <i>et al.</i> , 2020	DW			X	X	X	X		Circumglobal	1	0	1	1	1	1	1	1	1	LC
<i>Heteropriacanthus cruentatus</i> (Lacepède, 1801)	MPEG uncatalogated	C			X	X	X	X		Circumglobal	1	1	1	1	1	1	1	0	0	LC
<i>Priacanthus arenatus</i> Cuvier, 1829	AZUSC 5638	C			X	X	X	X		Atlantic	1	1	1	1	1	1	1	1	1	LC
<i>Pristigenys alta</i> (Gill, 1862) *	MPEG uncatalogated	C			X	X	X	X		Western Atlantic	1	1	1	1	1	1	0	0	0	LC
CHAETODONTIDAE																				
<i>Chaetodon ocellatus</i> Bloch, 1787	MPEG 35080	C		X	X	X	X	X		Western Atlantic	1	1	1	1	1	1	1	0	0	DD
<i>Chaetodon sedentarius</i> Poey, 1860	AZUSC 5331	C		X	X	X	X	X		Western Atlantic	1	1	1	1	1	1	1	0	0	LC
<i>Chaetodon striatus</i> Linnaeus, 1758	MUSP 53189	C	X		X*	X	X	X		Western Atlantic	1	1	1	1	1	1	1	0	0	LC
<i>Prognathodes guyanensis</i> (Durand, 1960)	MNHN 1960-0272	C			X*	X	X	X		Western Atlantic	0	0	1	1	1	1	1	1	1	LC
POMACANTHIDAE																				
<i>Centropyge aurantonotus</i> Burgess, 1974	UF 24054	C			X*	X	X	X		Atlantic	1	1	1	1	1	1	1	0	0	DD
<i>Holacanthus ciliaris</i> (Linnaeus, 1758)	AZUSC 5325	C		X	X	X	X	X		Western Atlantic	1	1	1	1	1	1	1	0	0	DD
<i>Holacanthus tricolor</i> (Bloch, 1795) *	MPEG uncatalogated	C			X*	X	X	X		Western Atlantic	1	1	1	1	1	1	1	0	0	DD
<i>Pomacanthus arcuatus</i> (Linnaeus, 1758)	USNM 216826	C			X*	X	X	X		Western Atlantic	1	1	1	1	1	1	1	0	0	DD
<i>Pomacanthus paru</i> (Bloch, 1787)	MPEG 33670	C		X	X	X	X	X		Atlantic	1	1	1	1	1	1	1	0	0	DD
MALACANTHIDAE																				
<i>Caulolatilus guppyi</i> Beebe & Tee-Van, 1937	Fig. 2G	C		X	X	X	X	X		Endemic AOP	0	0	0	1	0	0	0	0	0	N
<i>Caulolatilus intermedius</i> Howell Rivero, 1936 *	AZUSC 5668	C		X	X	X	X	X		Western Atlantic	1	1	1	1	0	0	0	0	0	N
<i>Malacanthus plumieri</i> (Bloch, 1786) *	MPEG uncatalogated	C			X*	X	X	X		Western Atlantic	1	1	1	1	1	1	1	0	0	LC
HAEMULIDAE																				
<i>Anisotremus surinamensis</i> (Bloch, 1791) *	MPEG 35160	C		X	X	X	X	X		Western Atlantic	1	1	1	1	1	1	1	0	0	DD
<i>Anisotremus virginicus</i> (Linnaeus, 1758)	MPEG 33318	C		X	X	X	X	X		Western Atlantic	1	1	1	1	1	1	1	0	0	LC
<i>Conodon nobilis</i> (Linnaeus, 1758)	MPEG 35140	C		X	X	X	X	X		Western Atlantic	1	1	1	1	1	1	1	1	1	LC
<i>Genyatremus luteus</i> (Bloch, 1790)	MPEG 35052	C		X	X	X	X	X		Western Atlantic	0	0	1	1	1	1	1	0	0	LC
<i>Haemulon atlanticum</i> Carvalho <i>et al.</i> , 2020	MPEG 35708	C		X	X	X	X	X		Western Atlantic	0	0	1	1	1	1	1	0	0	N
<i>Haemulon aurolineatum</i> Cuvier, 1830	Rocha & Rosa 2001	C			X*	X	X	X		Western Atlantic	1	1	1	1	1	1	1	0	0	LC
<i>Haemulon boschmae</i> (Metzelaar, 1919) *	Fig. 3A	C			X*	X	X	X		Western Atlantic	0	1	1	1	0	0	0	0	0	N
<i>Haemulon carbonarium</i> Poey, 1860 *	Fig. 3B	C		X	X	X	X	X		Western Atlantic	1	1	1	1	1	0	0	0	0	N
<i>Haemulon melanurum</i> (Linnaeus, 1758)	MPEG uncatalogated	C		X	X	X	X	X		Western Atlantic	0	1	1	1	1	1	0	0	0	LC

Table 1. Continuation.

Táxon	A	B	C	D	E	F	G	H	I	J	K	L	M	N	O	P	Q	R	S	T
HAEMULIDAE																				
<i>Haemulon parra</i> (Desmarest, 1823)	MPEG 33671	C	X	X	X	X	X	X	X	Western Atlantic	1	1	1	1	1	1	1	0	LC	LC
<i>Haemulon plumieri</i> (Lacepède, 1801)	USNM 398055	C	X	X	X	X	X	X	X	Western Atlantic	1	1	1	1	1	1	1	0	DD	LC
<i>Haemulon scitrus</i> (Shaw, 1803)	CAS 18353	C*	X	X*	X	X	X	X	X	Western Atlantic	1	1	1	1	1	0	0	0	N	LC
<i>Haemulon striatum</i> (Linnaeus, 1758)	UF 135072	C*	X	X*	X	X	X	X	X	Western Atlantic	1	1	1	1	1	1	0	0	LC	LC
<i>Haemulopsis corvinaeformis</i> (Steindachner, 1868)	MPEG 35205	C	X	X	X	X	X	X	X	Western Atlantic	1	0	1	1	1	1	1	0	LC	LC
<i>Orthopristis scapularis</i> Fowler, 1915	MPEG 35163	C	X	X	X	X	X	X	X	Western Atlantic	0	0	1	1	1	0	0	0	N	N
<i>Pomadasys crocro</i> (Cuvier, 1830)	MZUSP 3269	C	X	X	X	X	X	X	X	Western Atlantic	0	1	1	1	1	1	1	0	LC	DD
LUTJANIDAE																				
<i>Etelis oculatus</i> (Valenciennes, 1828)	Klautau et al., 2020	DW		X	X	X	X	X	X	Western Atlantic	1	1	1	1	1	1	0	0	LC	DD
<i>Lutjanus alexandrei</i> Moura & Lindeman, 2007	Rocha & Rosa 2001	C	X	X	X	X	X	X	X	Western Atlantic	0	0	0	1	1	1	0	0	LC	N
<i>Lutjanus analis</i> (Cuvier, 1828)	Rocha & Rosa 2001	C	X	X	X	X	X	X	X	Western Atlantic	1	1	1	1	1	1	0	0	NT	NT
<i>Lutjanus buccanella</i> (Cuvier, 1828) *	Fig. 3C	C*	X	X	X	X	X	X	X	Western Atlantic	1	1	1	1	1	1	0	0	LC	DD
<i>Lutjanus campechanus</i> (Poey, 1860) *	AZUSC 5483	C	X	X	X	X	X	X	X	Western Atlantic	1	1	1	0	0	0	0	0	N	VU
<i>Lutjanus cyanopterus</i> (Cuvier, 1828)	AZUSC 5561	C	X	X	X	X	X	X	X	Western Atlantic	1	1	1	1	1	1	0	0	VU	VU
<i>Lutjanus jocu</i> (Bloch & Schneider, 1801)	AZUSC 5607	C	X	X	X	X	X	X	X	Western Atlantic	1	1	1	1	1	1	0	0	NT	DD
<i>Lutjanus mahogoni</i> (Cuvier, 1828)	Leopold, 2004	C*	X	X	X	X	X	X	X	Western Atlantic	1	1	1	0	0	0	0	0	N	VU
<i>Lutjanus purpureus</i> (Cuvier, 1866)	MPEG 35576	C	X	X	X	X	X	X	X	Western Atlantic	0	0	0	1	1	1	1	0	VU	N
<i>Lutjanus synagris</i> (Linnaeus, 1758)	MPEG 35782	C	X	X	X	X	X	X	X	Western Atlantic	1	1	1	1	1	1	0	0	NT	NT
<i>Lutjanus vivanus</i> (Cuvier, 1828)	MPEG 35576	C	X	X	X	X	X	X	X	Western Atlantic	1	1	1	1	1	1	0	0	NT	LC
<i>Ocyurus chrysurus</i> (Bloch, 1791)	MPEG uncatalogated	C	X	X	X	X	X	X	X	Western Atlantic	1	1	1	1	1	1	0	0	NT	DD
<i>Pristipomoides aquilonaris</i> (Goode & Bean, 1896)	AZUSC 5186	C	X	X	X	X	X	X	X	Western Atlantic	1	1	1	1	1	1	1	1	LC	LC
<i>Pristipomoides freemani</i> Anderson, 1966 *	Fig. 3D	C	X	X	X	X	X	X	X	Western Atlantic	1	0	1	1	1	1	1	1	LC	LC
<i>Pristipomoides macrophthalmus</i> (Müller & Troschel, 1848)	NSMT-P 40305	C	X	X*	X	X	X	X	X	Western Atlantic	1	1	1	1	0	0	0	0	LC	LC
<i>Rhomboplites aurorubens</i> (Cuvier, 1829)	AZUSC 5368	C	X	X	X	X	X	X	X	Western Atlantic	1	1	1	1	1	1	0	0	NT	VU
CIRRHITIDAE																				
<i>Amblycirrhitus pinos</i> (Mowbray, 1927)	Rocha & Rosa 2001	C	X	X*	X	X	X	X	X	Atlantic	1	1	1	1	1	1	0	0	DD	LC
POLYNEMIDAE																				
<i>Polydactylus oligodon</i> (Günther, 1860)	Fig. 3E	C	X	X	X	X	X	X	X	Western Atlantic	0	1	1	1	1	1	1	1	LC	LC
<i>Polydactylus virginicus</i> (Linnaeus, 1758)	MPEG 35638	C	X	X	X	X	X	X	X	Western Atlantic	1	1	1	1	1	1	1	1	LC	LC

Table 1. Continuation.

Taxon	A	B	C	D	E	F	G	H	I	J	K	L	M	N	O	P	Q	R	S	T
SCORPAENIFORMES																				
SCORPAENIDAE																				
<i>Pontinus helena</i> Eschmeyer, 1965	NSMT-P-40374	DW*			X*	X				X	Endemic AOP	0	0	0	1	0	0	0	N	DD
<i>Pontinus longispinis</i> Goode & Bean, 1896	USNM 185299	DW			X*	X				X	Western Atlantic	1	1	1	1	1	0	0	LC	LC
<i>Pontinus nematophthalmus</i> (Günther, 1860)	USNM 185301	DW			X*	X				X	Western Atlantic	1	0	1	1	1	0	0	LC	LC
<i>Pontinus rathbuni</i> Goode & Bean, 1896	USNM 185023	DW			X	X				X	Western Atlantic	1	1	1	1	1	1	1	N	LC
<i>Pterois volitans</i> (Linnaeus, 1758) *	Fig. 3F	C			X	X				X	Exotic species	1	1	1	1	0	0	0	LC	LC
<i>Scorpaena agassizi</i> Goode & Bean, 1896	NSMT-P 40377	C			X*	X				X	Western Atlantic	1	1	1	1	1	0	0	LC	LC
<i>Scorpaena brasiliensis</i> Cuvier, 1829	AZUSC 5556	C			X	X*				X	Western Atlantic	1	1	1	1	1	1	0	LC	LC
<i>Scorpaena calcarata</i> Goode & Bean, 1882	UF 212382	C			X*	X				X	Western Atlantic	1	1	1	1	1	0	0	LC	LC
<i>Scorpaena dispar</i> Longley & Hildebrand, 1940	UF 212371	C			X*	X				X	Western Atlantic	1	1	1	1	1	1	1	LC	LC
<i>Scorpaena inermis</i> Cuvier, 1829	MNH 2003-0284	C			X*	X				X	Western Atlantic	1	1	1	1	1	0	0	N	LC
<i>Scorpaena isthmensis</i> Meek & Hildebrand, 1928	AZUSC5271	C	X	X	X	X				X	Western Atlantic	1	0	1	1	1	1	0	LC	LC
<i>Scorpaena melasma</i> Eschmeyer, 1965	UF 213330	C			X*	X				X	Western Atlantic	0	0	1	1	1	0	0	LC	N
<i>Scorpaena petricola</i> Eschmeyer, 1965	UF 212311	C			X*	X				X	Western Atlantic	0	0	0	1	1	0	0	DD	N
<i>Scorpaena plumieri</i> Bloch, 1789	GEA 59	C	X	X	X	X				X	Atlantic	1	1	1	1	1	1	1	LC	LC
SETARCHIDAE																				
<i>Ectreposebastes imus</i> Garman, 1899	NSMT-P-40383	DW*			X	X				X	Circumglobal	1	1	1	1	1	1	0	LC	LC
<i>Setarches guentheri</i> Johnson, 1862	CAS 51200	DW			X	X				X	Circumglobal	1	1	1	1	1	1	1	LC	LC
TRIGLIDAE																				
<i>Bellator brachyichir</i> (Regan, 1914)	UF 244014	DW			X	X				X	Western Atlantic	1	1	1	1	1	1	1	LC	LC
<i>Bellator egretta</i> (Goode & Bean, 1896)	UF 134727	C*			X	X				X	Western Atlantic	1	1	1	1	0	0	0	N	LC
<i>Bellator militaris</i> (Goode & Bean, 1896)	FMNH 67881	C			X	X				X	Western Atlantic	1	1	1	1	0	0	0	N	LC
<i>Bellator ribeiroi</i> Miller, 1965	ANSP 101189	C			X	X				X	Western Atlantic	0	0	1	1	1	0	0	LC	LC
<i>Prionotus beanii</i> Goode, 1896	NSMT-P-40389	DW*			X	X				X	Western Atlantic	0	1	1	1	1	1	1	N	LC
<i>Prionotus ophryas</i> Jordan & Swain, 1885	UF 206703	DW			X	X				X	Western Atlantic	1	1	1	1	0	0	0	N	LC
<i>Prionotus paralatus</i> Ginsburg, 1950	FMNH 67502	C*			X	X				X	Western Atlantic	0	1	0	1	0	0	0	N	LC
<i>Prionotus punctatus</i> (Bloch, 1793)	MPEG 35041	C	X	X	X	X				X	Western Atlantic	1	1	1	1	1	1	1	LC	LC
<i>Prionotus rosus</i> Jordan & Evermann, 1887	UF 239872	C			X	X				X	Western Atlantic	1	1	1	1	1	1	1	DD	LC
<i>Prionotus stearnsi</i> Jordan & Swain, 1885	NSMT-P-40388	DW*			X	X				X	Western Atlantic	1	1	1	1	0	0	0	N	LC

Table 1. Continuation.

Táxon	A	B	C	D	E	F	G	H	I	J	K	L	M	N	O	P	Q	R	S	T
PERISTEDIIDAE																				
<i>Peristedion ecuadorensis</i> Teague, 1961	FMNH 66522	DW	X	X	X	X	X	X	X	Western Atlantic	1	1	1	1	1	1	1	0	LC	LC
<i>Peristedion gracile</i> Goode & Bean, 1896	NSMT-P-40393	DW*	X	X	X	X	X	X	X	Western Atlantic	1	1	1	1	1	1	0	0	N	LC
<i>Peristedion miniatum</i> Goode, 1880	NSMT 45116	DW*	X	X	X	X	X	X	X	Western Atlantic	1	1	1	1	0	0	0	0	N	LC
<i>Peristedion truncatum</i> (Günther, 1880)	NSMT-P-40391	DW*	X	X	X	X	X	X	X	Western Atlantic	1	1	1	1	1	1	0	0	LC	LC
MORONIFORMES																				
EPHIPPIDAE																				
<i>Chaetodipterus faber</i> (Broussonet, 1782)	MPEG 35040	C	X	X	X	X	X	X	X	Western Atlantic	1	1	1	1	1	1	0	0	LC	LC
ACANTHURIFORMES																				
SCIAENIDAE																				
<i>Bairdiella goeldi</i> Marceñiuk et al., 2019	MPEG 33627	C	X*	X	X	X	X	X	X	Western Atlantic	0	0	0	1	1	1	0	0	N	N
<i>Corvula sanctaeluciae</i> Jordan, 1890	INHS 49021	C*	X*	X	X	X	X	X	X	Western Atlantic	1	1	1	0	0	0	0	0	LC	LC
<i>Ctenosciaena gracilicirrhus</i> (Metzelaar, 1919)	MPEG 35102	C	X	X	X	X	X	X	X	Western Atlantic	1	1	1	1	1	1	1	1	LC	LC
<i>Cynoscion acoupa</i> (Lacepède, 1801)	MPEG 35059	C	X	X	X	X	X	X	X	Western Atlantic	0	0	1	1	1	1	0	0	NT	LC
<i>Cynoscion jamaicensis</i> (Vaillant & Bocourt, 1883)	MPEG 35059	C	X	X	X	X	X	X	X	Western Atlantic	1	0	1	1	1	1	1	1	LC	LC
<i>Cynoscion letarchus</i> (Cuvier, 1830)	MPEG 35229	C	X	X	X	X	X	X	X	Western Atlantic	0	0	1	1	1	1	1	1	LC	LC
<i>Cynoscion microlepidotus</i> (Cuvier, 1830)	MPEG 32970	C	X	X	X	X	X	X	X	Western Atlantic	0	0	0	1	1	1	0	0	LC	LC
<i>Cynoscion similis</i> Randall & Cervigón, 1968	MPEG 35042	C	X	X	X	X	X	X	X	Endemic AOP	0	0	0	1	0	0	0	0	NA	LC
<i>Cynoscion steindachneri</i> (Jordan, 1889)	MPEG 33352	C	X	X	X	X	X	X	X	Western Atlantic	0	0	0	1	1	1	0	0	LC	LC
<i>Cynoscion virescens</i> (Cuvier, 1830)	AZUSC 5492	C	X	X	X	X	X	X	X	Western Atlantic	0	0	1	1	1	1	1	1	LC	LC
<i>Eques lanceolatus</i> (Linnaeus, 1758)	Rocha & Rosa, 2001	C		X*	X*	X*	X*	X*	X*	Western Atlantic	1	1	1	1	1	1	0	0	LC	LC
<i>Eques punctatus</i> Bloch & Schneider, 1801	Leopold, 2004	C*		X*	X*	X*	X*	X*	X*	Western Atlantic	0	1	1	1	1	0	0	0	NA	LC
<i>Isopisthus parvipinnis</i> (Cuvier, 1830)	MPEG 35051	C	X	X	X	X	X	X	X	Western Atlantic	0	0	1	1	1	1	1	1	LC	LC
<i>Larimus breviceps</i> Cuvier, 1830	MPEG 35128	C	X	X	X	X	X	X	X	Western Atlantic	0	0	1	1	1	1	1	1	LC	LC
<i>Lonchurus elegans</i> Boeseman, 1948	USNM 367743	C	X	X	X	X	X	X	X	Endemic AOP	0	0	0	1	0	0	0	0	DD	DD
<i>Lonchurus lanceolatus</i> (Bloch, 1788)	MPEG 32898	C	X	X	X	X	X	X	X	Endemic AOP	0	0	0	1	0	0	0	0	LC	LC
<i>Macrodon ancylodon</i> (Bloch & Schneider, 1801)	MPEG 35635	C	X	X	X	X	X	X	X	Western Atlantic	0	1	1	1	1	0	0	0	LC	LC
<i>Menticirrhus cuianensis</i> Marceñiuk et al., 2020	MPEG 33244	C	X	X	X	X	X	X	X	Western Atlantic	0	0	0	1	1	1	0	0	N	N
<i>Menticirrhus martinicensis</i> (Cuvier, 1830)	MPEG 35037	C	X	X	X	X	X	X	X	Western Atlantic	0	0	1	1	1	1	1	1	N	N
<i>Microponias furnieri</i> (Desmarest, 1823)	MPEG 35200	C	X	X	X	X	X	X	X	Western Atlantic	0	1	1	1	1	1	1	1	LC	LC

Table 1. Continuation.

Táxon	A	B	C	D	E	F	G	H	I	J	K	L	M	N	O	P	Q	R	S	T
SCIAENIDAE																				
<i>Nebris microps</i> Cuvier, 1830	MPEG 35050	C	X	X		X				Western Atlantic	0	0	1	1	1	1	1	1	0	LC
<i>Odontoscion dentex</i> (Cuvier, 1830)	KU 10569	C			X*	X				Western Atlantic	1	1	1	1	1	1	1	0	0	LC
<i>Paralonchurus brasiliensis</i> (Steindachner, 1875)	MPEG 35061	C	X	X		X				Western Atlantic	0	0	1	1	1	1	1	1	1	LC
<i>Pareques acuminatus</i> (Bloch & Schneider, 1801)	Rocha & Rosa 2001	C			X*	X				Western Atlantic	1	1	1	1	1	1	1	0	0	LC
<i>Pareques iwamotoi</i> Miller & Woods, 1988 *	MPEG uncatalogated	C			X*	X				Western Atlantic	1	1	1	1	0	0	0	0	0	N
<i>Stellifer brasiliensis</i> (Schultz, 1945)	MPEG 33284	C	X	X		X				Western Atlantic	0	0	0	1	1	1	1	1	1	LC
<i>Stellifer cervigoni</i> Chao <i>et al.</i> , 2021	Chao <i>et al.</i> , 2021	C	X	X		X				Western Atlantic	0	0	1	1	0	0	0	0	0	N
<i>Stellifer collettei</i> Chao <i>et al.</i> , 2021	Chao <i>et al.</i> , 2021	C	X	X		X				Western Atlantic	0	0	0	1	1	1	1	0	0	N
<i>Stellifer gomezi</i> Chao <i>et al.</i> , 2021	Chao <i>et al.</i> , 2021	C	X	X		X				Western Atlantic	0	0	1	1	1	1	1	0	0	N
<i>Stellifer microps</i> (Steindachner, 1864)	GEA 12408	C	X	X		X				Western Atlantic	0	0	0	1	1	1	1	0	0	LC
<i>Stellifer musicki</i> Chao <i>et al.</i> , 2021	Chao <i>et al.</i> , 2021	C	X	X		X				Endemic AOP	0	0	0	1	0	0	0	0	0	N
<i>Stellifer naso</i> (Jordan, 1889)	GEA 12414	C	X	X		X				Western Atlantic	0	0	0	1	1	1	1	0	0	LC
<i>Stellifer punctatissimus</i> (Meek & Hildebrand, 1925)	AZUSC 5178	C	X	X		X				Western Atlantic	0	0	1	1	1	1	1	0	0	DD
<i>Stellifer rastrifer</i> (Jordan, 1889)	MPEG 33040	C	X	X		X				Western Atlantic	0	0	1	1	1	1	1	1	1	LC
<i>Stellifer stellifer</i> (Bloch, 1790)	MPEG 32910	C	X	X		X				Western Atlantic	0	0	1	1	1	1	1	0	0	LC
<i>Umbrina coroides</i> Cuvier, 1830	GEA 12421	C	X	X		X				Western Atlantic	1	1	1	1	1	1	1	1	1	LC
ACANTHURIDAE																				
<i>Acanthurus bahianus</i> Castelnau, 1855	Rocha & Rosa 2001	C			X*	X				Atlantic	1	1	1	1	1	1	1	0	0	LC
<i>Acanthurus chirurgus</i> (Bloch, 1787)	MPEG 35178	C			X*	X				Atlantic	1	1	1	1	1	1	1	0	0	LC
<i>Acanthurus coeruleus</i> Bloch & Schneider, 1801	MPEG uncatalogated	C			X*	X				Western Atlantic	1	1	1	1	1	1	1	0	0	LC
SPARIFORMES																				
LOBOTIDAE																				
<i>Lobotes surinamensis</i> (Bloch, 1790)	MPEG 32749	C	X	X		X	X	X		Circumglobal	1	1	1	1	1	1	1	1	1	LC
SPARIDAE																				
<i>Archosargus probatocephalus</i> (Walbaum, 1792)	OBIS BR 152	C	X	X		X				Western Atlantic	1	1	1	1	1	1	1	0	0	DD
<i>Archosargus rhomboidalis</i> (Linnaeus, 1758)	OBIS BR 172	C	X	X		X				Western Atlantic	1	1	1	1	1	1	1	1	1	LC
<i>Calamus bajonado</i> (Bloch & Schneider, 1801)	USNM 388823	C			X	X				Western Atlantic	1	1	1	1	1	1	1	0	0	DD
<i>Calamus calamus</i> (Valenciennes, 1830)	Fig. 3G	C			X	X				Western Atlantic	1	1	1	1	1	1	1	0	0	DD
<i>Calamus penna</i> (Valenciennes, 1830)	MPEG 35709	C			X	X				Western Atlantic	1	1	1	1	1	1	1	0	0	LC
<i>Calamus pennatula</i> Guichenot, 1868	Fig. 3H	C			X	X				Western Atlantic	1	1	1	1	1	1	1	0	0	LC

Table 1. Continuation.

Táxon	A	B	C	D	E	F	G	H	I	J	K	L	M	N	O	P	Q	R	S	T
CAPROIFORMES																				
CAPROIDAE																				
<i>Antigonia capros</i> Lowe, 1843	Klautau et al., 2020	DW	X	X	X	X				Circumglobal	1	1	1	1	1	1	1	1	1	LC
<i>Antigonia combatia</i> Berry & Rathjen, 1959	Klautau et al., 2020	DW	X	X	X					Western Atlantic	1	1	1	1	1	1	1	0	0	LC
LOPHIIFORMES																				
LOPHIIDAE																				
<i>Lophiodes reticulatus</i> Caruso & Suttkus, 1979	NSMT-P-40204	DW*	X					X	Western Atlantic		1	1	1	0	0	0	0	0	0	N
<i>Lophius gastrophysus</i> Miranda Ribeiro, 1915	Klautau et al., 2020	DW	X					X	Western Atlantic		1	1	1	1	1	1	1	1	1	NT
<i>Sladenia shaeferi</i> Caruso & Bullis, 1976	Klautau et al., 2020	DW	X	X				X	Western Atlantic		1	0	1	1	0	0	0	0	0	LC
ANTENNARIIDAE																				
<i>Antennarius multiocellatus</i> (Valenciennes, 1837)	FMNH 69440	C	X	X				X	Circumglobal		1	1	1	1	1	1	1	1	1	DD
<i>Antennarius striatus</i> (Shaw, 1794)	MPEG 35593	C	X	X	X			X	Circumglobal		1	1	1	1	1	1	1	1	1	DD
<i>Fowlerichthys radiosus</i> (Garman, 1896)	NSMT-P-40209	C*	X	X*				X	Atlantic		1	1	1	1	0	0	0	0	0	LC
<i>Histrio histrio</i> (Linnaeus, 1758)	MCZ 11636	C	X	X				X	Circumglobal		1	0	0	1	1	1	1	1	1	1
CHAUNACIDAE																				
<i>Chaunax suttkusi</i> Caruso, 1989	Klautau et al., 2020	DW	X					X	Atlantic		1	1	1	1	1	0	0	0	0	LC
OGCOCEPHALIDAE																				
<i>Dibranchius atlanticus</i> Peters, 1876	CAS 42694	DW	X					X	Atlantic		1	1	1	1	1	1	1	1	1	LC
<i>Halieutichthys aculeatus</i> (Mitchill, 1818)	MPEG 35851	C	X	X				X	Western Atlantic		1	1	1	1	1	0	0	0	0	DD
<i>Ogcocephalus cubifrons</i> (Richardson, 1836)	MPEG 35167	C	X	X				X	Western Atlantic		1	1	1	0	0	0	0	0	0	N
<i>Ogcocephalus nasutus</i> (Cuvier, 1829)	AZUSC 5372	C	X	X				X	Western Atlantic		1	1	1	1	1	1	1	0	0	LC
<i>Ogcocephalus notatus</i> (Valenciennes, 1837)	AZUSC 5335	C	X	X				X	Western Atlantic		1	1	1	1	1	1	0	0	0	LC
<i>Ogcocephalus parvus</i> Longley & Hildebrand, 1940	MCZ 45076	C*	X	X				X	Western Atlantic		1	1	1	1	1	1	0	0	0	DD
<i>Ogcocephalus pumilus</i> Bradbury, 1980	MPEG uncatalogated	C	X					X	Western Atlantic		1	1	1	0	0	0	0	0	0	N
<i>Ogcocephalus rostellum</i> Bradbury, 1980	CAS 62123	DW*	X	X				X	Western Atlantic		1	0	1	1	0	0	0	0	0	N
<i>Ogcocephalus vespertilio</i> (Linnaeus, 1758)	MPEG 32999	C	X	X				X	Western Atlantic		1	1	1	1	1	1	1	1	1	LC
<i>Zalieutes mcgintyi</i> (Fowler, 1952)	NSMT-P-40213	DW*	X					X	Western Atlantic		1	1	1	1	0	0	0	0	0	N
CAULOPHYRYNIDAE																				
<i>Caulophryne jordani</i> Goode & Bean, 1896	NSMT-P-40218	DW*	X	X				X	Circumglobal		1	0	0	1	0	0	0	0	0	N

Table 1. Continuation.

Táxon	A	B	C	D	E	F	G	H	I	J	K	L	M	N	O	P	Q	R	S	T
MELANOCETIDAE																				
<i>Melanocetus johnsonii</i> Günther, 1864	NSMT-P-40219	DW*				X	X			Circumglobal	1	1	1	1	1	1	1	1	1	LC
HIMANTOLOPHIDAE																				
<i>Himantolophus albinares</i> Maul, 1961	NSMT-P-40222	DW*				X	X			Atlantic, E Pacific	1	1	1	1	0	0	0	0	0	DD
HIMANTOLOPHIDAE																				
<i>Himantolophus groenlandicus</i> Reinhardt, 1837	NSMT-P-40223	DW*				X	X			Circumglobal	1	1	0	1	1	0	0	0	0	LC
<i>Himantolophus pauciflorus</i> Bertelsen & Krefft, 1988	UF 23790	DW*				X	X			Atlantic	0	0	0	1	1	0	0	0	0	LC
DICERATIIDAE																				
<i>Bufoeratius wedli</i> (Pietschmann, 1926)	NSMT-P-40221	DW*				X	X			Circumglobal	1	1	1	1	1	0	0	0	0	LC
<i>Diceratius pileatus</i> Uwate, 1979	NSMT-P-40220	DW*				X	X			Circumglobal	0	0	1	1	0	0	0	0	0	LC
ONEIRODIDAE																				
<i>Chaenophryne ramifera</i> Regan & Trewavas, 1932	UF 23793	DW*				X	X			Circumglobal	0	0	1	1	0	0	0	0	0	LC
<i>Oneirodes carlsbergi</i> (Regan & Trewavas, 1932)	UF 23792	DW*				X	X			Circumglobal	0	0	0	1	0	0	0	0	0	LC
<i>Oneirodes eschrichtii</i> Lütken, 1871	UF 23794	DW*				X	X			Circumglobal	1	1	0	1	0	0	0	0	0	LC
CERATIIDAE																				
<i>Cryptopsaras couesii</i> Gill, 1883	NSMT-P-40226	DW*				X	X			Circumglobal	1	1	1	1	1	1	1	1	1	LC
GIGANTACTINIDAE																				
<i>Gigantactis macronema</i> Regan 1925	NSMT-P-40225	DW*				X	X			Atlantic, E Pacific	1	0	0	1	0	0	0	0	0	LC
<i>Gigantactis vanhoeffeni</i> Brauer, 1902	NSMT-P-40224	DW*				X	X			Circumglobal	1	1	1	1	1	0	0	1	1	DD
TETRAODONTIFORMES																				
TRIACANTHODIDAE																				
<i>Hollandia hollardi</i> Poey, 1861	NSMT-P-40409	DW*				X	X		X	Western Atlantic	1	1	1	1	1	0	0	0	0	LC
OSTRACIIDAE																				
<i>Acanthostracion polygonius</i> Poey, 1876	AZUSC 5329	C				X	X		X	Western Atlantic	1	1	1	1	1	1	0	1	0	LC
<i>Acanthostracion quadricornis</i> (Linnaeus, 1758)	AZUSC 5454	C				X	X		X	Atlantic	1	1	1	1	1	1	1	1	1	LC
<i>Lactophrys trigonus</i> (Linnaeus, 1758) *	AZUSC 5188	C				X	X		X	Western Atlantic	1	1	1	1	1	1	1	1	1	LC
<i>Lactophrys triquetter</i> (Linnaeus, 1758)	Leopold, 2004	C*				X*	X		X	Western Atlantic	1	1	1	1	1	1	1	0	0	LC
BALISTIDAE																				
<i>Balistes capricornis</i> Gmelin, 1789	AZUSC 5504	C				X	X		X	Atlantic	0	1	1	1	1	1	1	1	1	NT
<i>Balistes vetula</i> Linnaeus, 1758	MPEG uncatálogated	C				X	X		X	Atlantic	1	1	1	1	1	1	1	1	1	NT

Table 1. Continuation.

Táxon	A	B	C	D	E	F	G	H	I	J	K	L	M	N	O	P	Q	R	S	T
BALISTIDAE																				
<i>Canthidermis maculata</i> (Bloch, 1786) *	MPEG uncatalogated	C			X	X	X			Circumglobal	1	1	1	1	1	1	1	0	LC	LC
<i>Canthidermis sufflamen</i> (Mitchill, 1815)	Rocha & Rosa 2001	DW-O			X	X	X			Atlantic	1	1	1	1	1	1	0	LC	LC	LC
<i>Xanthichthys ringens</i> (Linnaeus, 1758) *	MPEG uncatalogated	C			X	X	X			Atlantic	1	1	1	1	1	1	0	LC	LC	LC
MONACANTHIDAE																				
<i>Aluterus heudelotii</i> Hollard, 1855 *	AZUSC 5494	C			X	X	X			Atlantic	1	1	1	1	1	1	0	LC	LC	LC
<i>Aluterus monoceros</i> (Linnaeus, 1758)	MPEG 35756	C			X	X	X			Circumglobal	1	1	1	1	1	1	1	NT	LC	LC
<i>Aluterus schoepfii</i> (Walbaum, 1792)	NSMT-P-40416	C*			X	X	X			Atlantic	1	1	1	1	1	1	0	LC	N	N
<i>Aluterus scriptus</i> (Osbeck, 1765) *	MPEG uncatalogated	C			X	X	X			Circumglobal	1	1	1	1	1	1	0	LC	LC	LC
<i>Cantherhines macrocerus</i> (Hollard, 1853) *	MPEG uncatalogated	C		X	X	X	X			Atlantic	1	1	1	1	1	1	0	LC	LC	LC
<i>Cantherhines pullus</i> (Ranzani, 1842)	USNM 399034	C	X	X	X	X	X			Atlantic	1	1	1	1	1	1	0	LC	LC	LC
<i>Monacanthus ciliatus</i> (Mitchill, 1818)	UF 212313	C		X	X	X	X			Atlantic	1	1	1	1	1	1	0	LC	LC	LC
<i>Stephanolepis hispidus</i> (Linnaeus, 1766)	ANSP 100089	C	X	X	X	X	X			Atlantic	1	1	1	1	1	1	1	LC	LC	LC
<i>Stephanolepis setifer</i> (Bennett, 1831)	UF 211547	C*		X	X	X	X			Atlantic	1	1	1	1	1	1	0	LC	LC	LC
MOLIDAE																				
<i>Mola mola</i> (Linnaeus, 1758)	Asano-Filho, 2004	C-O			X	X				Circumglobal	1	1	1	1	1	1	1	1	LC	VU
TETRAODONTIDAE																				
<i>Canthigaster fiquiredoi</i> Moura & Castro, 2002	ANSP 100132	C			X*	X	X			Western Atlantic	0	0	0	1	1	1	0	LC	LC	LC
<i>Colomesus asellus</i> (Müller & Troschel, 1848)	FMNH 114396	C	X*							Endemic AOP	0	0	0	1	0	0	0	LC	N	N
<i>Colomesus psittacus</i> (Bloch & Schneider, 1801)	MPEG 35033	C	X	X						Western Atlantic	0	0	0	1	1	0	0	LC	LC	LC
<i>Lagocephalus laevigatus</i> (Linnaeus, 1766)	MPEG 35150	C	X	X	X	X	X			Atlantic	1	1	1	1	1	1	1	LC	LC	LC
<i>Lagocephalus lagocephalus</i> (Linnaeus, 1758)	Fig. 3I	C-O			X	X				Circumglobal	1	1	1	1	1	1	0	LC	LC	LC
<i>Sphoeroides dorsalis</i> Longley, 1934	CAS 51189	C	X	X	X	X				Western Atlantic	1	1	1	1	1	1	0	LC	LC	LC
<i>Sphoeroides greeleyi</i> Gilbert, 1900	CIUFES 2287	C	X	X	X	X				Western Atlantic	0	0	1	1	1	1	0	LC	LC	LC
<i>Sphoeroides nephelus</i> (Goode & Bean, 1882)	INPA 023853	C	X	X	X	X				Western Atlantic	1	1	1	1	1	1	0	N	LC	LC
<i>Sphoeroides pachygaster</i> (Müller & Troschel, 1848)	NSMT-P-40421	DW*			X	X	X			Circumglobal	1	1	1	1	1	1	1	LC	LC	LC
<i>Sphoeroides spengleri</i> (Bloch, 1785)	MCZ 12129	C	X	X	X	X				Atlantic	1	1	1	1	1	1	0	LC	LC	LC
<i>Sphoeroides testudineus</i> (Linnaeus, 1758)	MPEG 35112	C	X	X	X	X				Western Atlantic	1	1	1	1	1	1	0	DD	LC	LC
<i>Sphoeroides tyleri</i> Shipp, 1974	ANSP 101361	C	X	X	X	X				Western Atlantic	0	0	1	1	1	1	0	LC	LC	LC

Table 1. Continuation.

Táxon	A	B	C	D	E	F	G	H	I	J	K	L	M	N	O	P	Q	R	S	T
DIODONTIDAE																				
<i>Chilomycterus antillarum</i> Jordan & Rutter, 1897	MPEG 35562	C		X	X		X			Western Atlantic	1	1	1	1	1	1	0	0	LC	LC
<i>Chilomycterus reticulatus</i> (Linnaeus, 1758)	MPEG 35614	C		X	X		X			Circumglobal	1	1	1	1	1	1	0	0	LC	LC
<i>Chilomycterus spinosus</i> (Linnaeus, 1758)	AZUSC 5382	C	X	X	X		X			Atlantic	1	1	1	1	1	1	1	1	LC	LC
<i>Diodon eydouxi</i> Brisout de Barneville, 1846	ACF PML Pers. Obs	C-O				X	X			Circumglobal	1	1	1	1	1	1	0	0	LC	LC
<i>Diodon holacanthus</i> Linnaeus, 1758 *	Fig. 3J	O-DW			X	X				Circumglobal	0	1	1	1	1	1	0	0	N	LC
<i>Diodon hystrix</i> Linnaeus, 1758	Rocha & Rosa 2001	O-DW		X	X		X			Circumglobal	1	1	1	1	1	1	0	0	LC	LC

ords that need confirmation and differentiated from those recorded to Brazil by an asterisk in Table 1 column B.

Habitat use was adapted from Gaither *et al.* (2016), being and divided into four basic categories: (i) species associated with estuaries, including those found in areas with freshwater influence (Table 1 column C), (ii) marine species associated with soft, sandy, muddy, or gravelly substrates (Table 1 column D), (iii) species found over coral reefs or rocky bottoms (Table 1 column E), and (iv) species that inhabit the water column (Table 1 column F). Habitat preferences were obtained from recent publications on each species, based on Fricke *et al.* (2019). Habitat use was recognized as (i) pelagic (upper portion of the water column, Table 1 column G), (ii) benthic (sea floor, Table 1 column H), and (iii) demersal (lower portion of the water column, Table 1 column I). This classification and the shoaling habits of the species were derived from the data available in the FishBase online database (<http://www.fishbase.org/search.php>).

Results

A total of 787 species of the Teleostei were recorded off the North Coast of Brazil and adjacent waters, representing 156 families and 45 orders (Table 1). Most (531) of these species are coastal, 256 inhabit deeper water, and 31 pelagic (oceanic) species are common to both the internal and external continental shelf, of which 54 represent new records (Table 1).

The most species-diverse order was the Perciformes (131 spp., 16.7% of the total), followed by the Anguilliformes (52 spp., 6.6%), Gobiiformes (42 spp., 5.3%), Pleuronectiformes (41 spp., 5.2%), Tetraodontiformes (38 spp., 4.8%), and the Acanthuriformes and Carangiformes, each with 35 species or 4.5% of the total (Table 1). Families with the largest numbers of species are Serranidae, with 40 species (5.1%), followed by the Sciaenidae (36 spp., 4.6%), Carangidae (28 species, 3.6%), Gobiidae (22 spp., 2.8%), Ophidiidae (19 spp., 2.4%), and the Engraulidae and Myctophidae, each with 18 species, or 2.3% of the total (Table 1).



Figure 2. Species without vouchers, but with photographic records of onboard observer. (A) *Albula gorensis*, CEPNOR; (B) *Sardinella brasiliensis*, REVIZEE Score-Norte; (C) *Hyporthodus flavolimbatus*, CEPNOR; (D) *Decapterus macarellus*, CEPNOR; (E) *Katsuwonus pelamis*, CEPNOR; (F) *Cyclopsetta fimbriata*, CEPNOR; (G) *Caulolatilus guppyi*, CEPNOR; (H) *Centropomus pectinatus*, REVIZEE Score-Norte; (I) *Thunnus obesus*, CEPNOR; (J) *Euthynnus alletteratus*, CEPNOR.

Four hundred and five species (51.5%) occur in reef environments, including 129 (16.4%) that are found exclusively in these environments (Table 1 column E). Three hundred and thirty-nine species (43.1%) are associated with unconsolidated substrates, such as sand, muddy, or gravel (Table 1 column D), whereas 287 species (36.5%) inhabit the water column

(Table 1 column F). A total of 257 (32.7%) species, in turn, are found in estuaries, and 162 (20.6%) can also be found in reef environments (Table 1 column C and E). Overall, 282 (35.8%) of the species are pelagic, 336 (42.7%) are demersal, swimming near the bottom, and 189 (24.0%) are benthic, that is, live on or in contact with the bottom substrate. At least 262

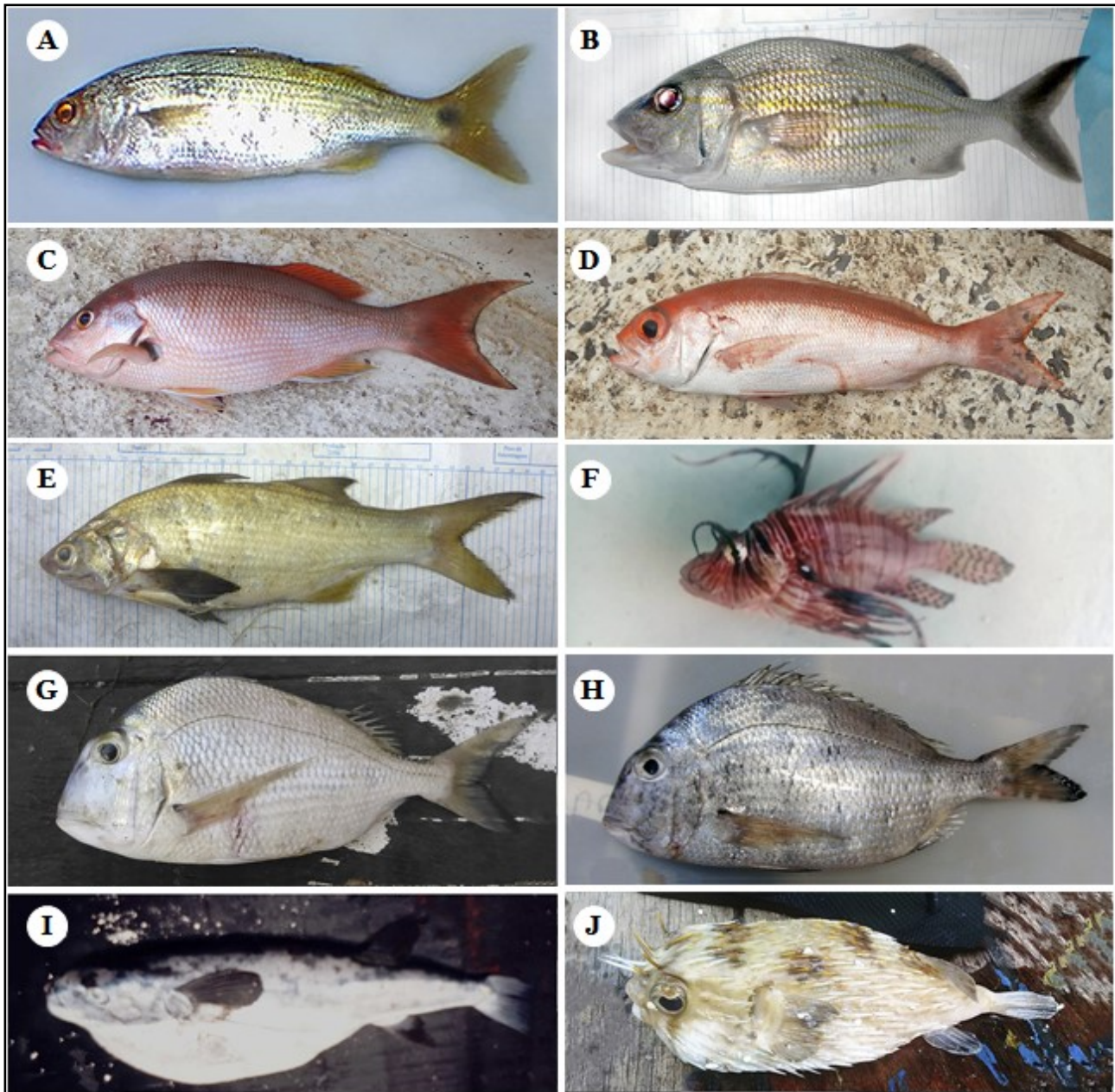


Figure 3. Species without vouchers, but with photographic records of onboard observer. (A) *Haemulon boschmae*, REVIZEE Score-Norte; (B) *Haemulon carbonarium*, CEPNOR; (C) *Lutjanus buccanella*, CEPNOR; (D) *Pristipomoides freeman*, CEPNOR; (E) *Polydactylus oligodon*, CEPNOR; (F) *Pterois volitans*, CEPNOR; (G) *Calamus calamus*, CEPNOR; (H) *Calamus pennatula*, CEPNOR; (I) *Lagocephalus lagocephalus*, REVIZEE Score-Norte; (J) *Diodon holacanthus*, CEPNOR.

species can be found in more than one environment, while at least 18 have more than one life trait.

A total of 181 (23.0%) species are widely distributed in most of the world's oceans, 130 (16.5%) are found only in the eastern and western Atlantic Ocean, two (0.3%) occur in the Atlantic and the eastern Pacific, 432 (54.9%) are restricted to the western Atlantic, and seven (0.9%) species are found in the western Atlan-

tic and the eastern Pacific (Table 1). Thirty-three (4.2%) species are endemic to the area of influence of the Amazon-Orinoco Plume (AOP), while three, *Butis koilomatodon*, *Omobranchus punctatus* and *Pterois volitans*, are exotic (Table 1). Forty species (5.1%) are listed as threatened at national level, while thirty species are listed as threatened at the global level (Table 1, column R and S).

The species endemic to the AOP belong

to families Ariidae (8 spp.), Sciaenidae (4 spp.), Engraulidae and Gobiidae (2 spp. each), Ophidiidae (2 spp.), and 13 additional families, each represented by a single endemic species (Table 1 column N). There is a strong correlation between endemic species and the Amazon-Orinoco Plume and the mangroves, a condition corroborated by the large number of endemic species with estuarine life habits and/or associated with areas with freshwater influence, such as those of the families Ariidae, Engraulidae, Gobiidae, Sciaenidae, Achiridae, Anablepidae, Batrachoididae, Carangidae, Centropomidae, Clupeidae, and Tetraodontidae, represented by 25 endemic species. This situation contrasts with the case of endemic species exclusively marine of the families Congridae, Cynoglossidae, Draconettidae, Malacanthidae, Moringuidae, and Scorpaenidae, represented by seven endemic species.

The North Coast of Brazil shares a large number of species of the Teleostei with neighboring areas with very different environmental conditions, such as the Greater Caribbean, with 674 shared species (85.6%) (Figure 4, Table 1 column K-R), and the Northeast Coast of Brazil, with 642 shared species (81.6%) (Figure 4, Table 1 column K-R), both characterized by saline and clear waters, and a small number of estuarine areas. The lowest number of shared species was found with the South Coast of Brazil, Uruguay and Argentina, with 249 species (31.6%), and the Southeast Coast of Brazil, with 509 species (64.7%) (Figure 4, Table 1 column K-R), reflecting the occurrence of a distinct fish fauna in the temperate South Atlantic (e.g. Caires, 2014).

Species of the orders Atheriniformes and Siluriformes that occur off the North Coast of Brazil are not present in Gulf of Mexico and the Caribbean (Table 1 column K-R). Species of the orders Labriformes, Kurtiformes, Batrachoidiformes, Moroniformes, Notacanthiformes, and Holocentriformes, in turn, are absent from the South Coast of Brazil, even though their diversity is relatively high as far south as the Southeast Coast (Table 1 column K-R). Species of Lampriformes and Scombro-labraciformes recorded in the North Coast are

absent from the Southeast and South Coast of Brazil (Table 1 column K-R). Species of several other orders (Albuliformes, Anguilliformes, Carangiformes, Caproiformes, Tetradontiformes, Beryciformes, Beloniformes, Perciformes, Spariformes, Scorpaeniformes, Trachiniformes, and Pleuronectiformes) are present in the Southern coast of Brazil, but with a greatly reduced diversity (Table 1 column K-R). Surprisingly, these orders are more diverse of the East Coast of the United States, which has a similar temperate climate to that of the South Coast of Brazil. The orders Blenniiformes, Clupeiformes, Mugiliformes, Callionymiformes, and Gobiiformes are characterized by reduced species diversity, both in the East Coast of the United States and the South Coast of Brazil (Table 1 column K-R). The Batrachoidiformes is characterized by a high species richness, not only off the North Coast of Brazil, but also in the neighboring regions, such as the Caribbean and the Northeast and East Coasts of Brazil (Table 1 column K-R). Anablepidae (Cyprinodontiformes) occurs only in North Brazil and the neighboring regions, i.e., the Caribbean and Northeast Coast of Brazil (Table 1 column K-R).

Discussion

The fish fauna of the North Coast of Brazil is one of the least surveyed and the most poorly known of the Brazilian Exclusive Economic Zone (Marceniuk *et al.*, 2013). Including records from off French Guiana and Suriname and the Northeast Coast of Brazil, Menezes *et al.* (2003) listed 464 species for the Brazilian North Coast, without any collection and inventory effort (see Marceniuk *et al.*, 2013), a much smaller number than the 787 species recorded in this study. Reliable data on the diversity of the Teleostei in the North Coast of Brazil, in both marine and estuarine environments, are fundamental for the development of adequate public policies for the conservation of this fauna, which will be relevant to guarantee not only the maintenance of the region's biodiversity, but also the rational exploitation of its natural resources. This inventory and the compilation of data on the fish diversity of the North Coast

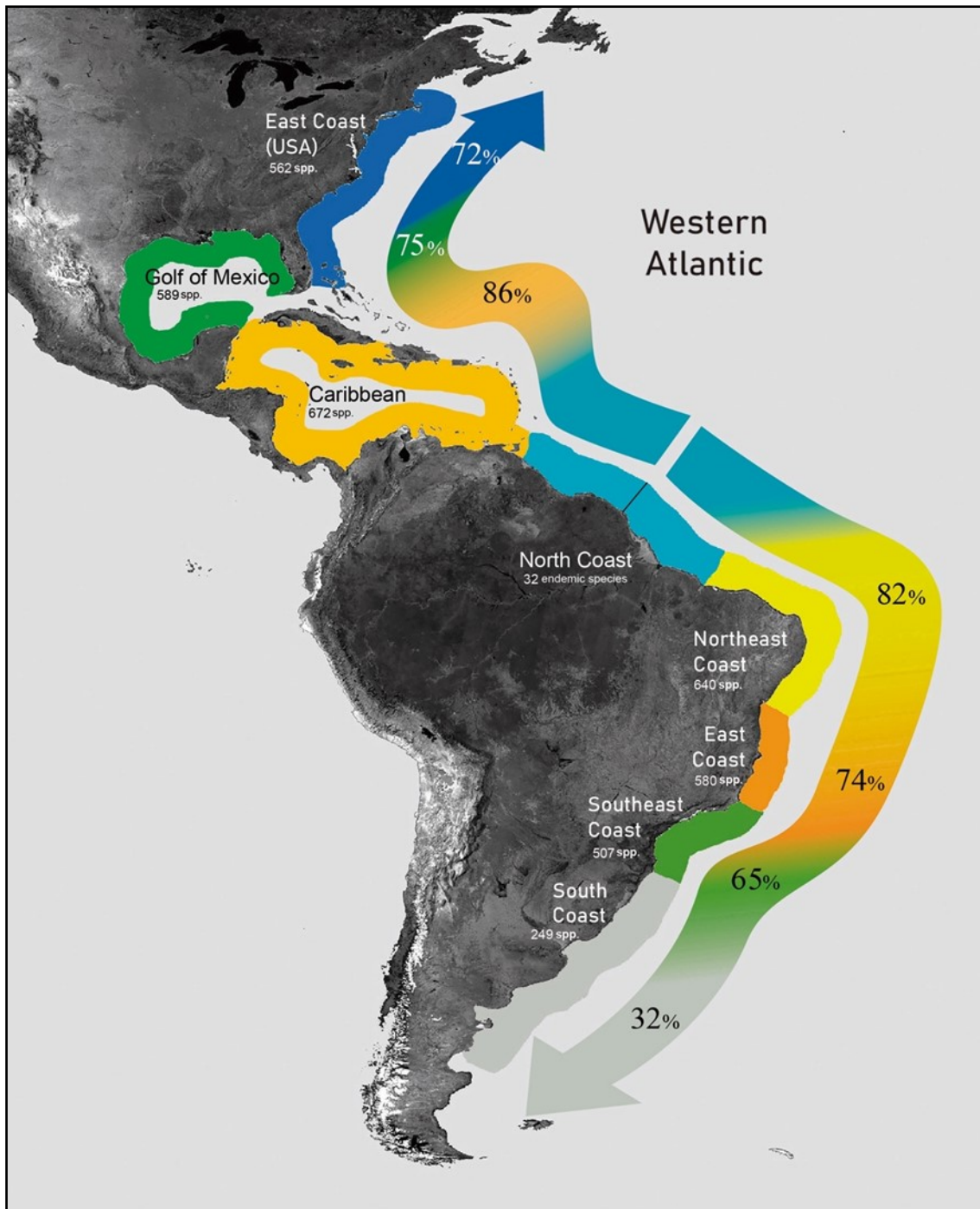


Figure 4. Western Atlantic Ocean showing the different geographic areas that share species of the Teleostei with the North Coast of Brazil (the percentages refer to the species shared with the North Coast of Brazil).

of Brazil will also be relevant to ensure that Brazil honors the international commitments it accepted during the United Nations Conference on the Environment and Development (MMA, 2002). Several challenges nevertheless persist for the understanding of the biological diversity of the North Coast of Brazil, particularly, questions related to conservation biology, such as

the identification of isolated populations and endemic species, the development of management strategies, and the Brazilian assessment of the conservation status of species, including data ontogenetic diversity. Spatial or temporal studies of species or populations will also be important to ensure advances in the understanding of the biogeography and evolution of

the Brazilian fauna, providing data on phylogenetic relationships, possible migration routes, and the patterns of species dispersal. This knowledge is also important for the definition of the priority areas for the conservation and management of the stocks of species targeted by commercial fisheries. Special attention is given to recognize species endemic to the region of the Amazon-Orinoco Plume since they are restricted to an area exploited intensively by commercial fisheries (Marceniuk *et al.*, 2019).

In this context, monitoring of fisheries represent an effective strategy for the sampling of aquatic communities, providing data on population parameters and about the impact of the exploitation of natural resources (Marceniuk *et al.*, 2013). Monitoring of fisheries represents, also, a valuable tool for the increase of knowledge of the biological diversity in areas that are poorly sampled, especially due to the limitations of financial resources to marine scientific cruises (Marceniuk *et al.*, 2019).

Invasive species

The inventory of the fish fauna of the North Coast of Brazil is also important for the monitoring of invasive species. The early records of invasive species in this region can collaborate to the implementation of effective measures of control and to minimize possible impacts. Three of the 787 species recorded in the North Coast of Brazil, *Butis koilomatodon*, *Omobranchus punctatus* and *Pterois volitans*, are native to the Indo-Pacific region. The first two were possibly introduced accidentally through the discharge of ballast water by visiting ships (Soares *et al.*, 2011, 2012). This process, together with bio-encrustation, is regarded as the main source of introduction of exotic species in marine environments (Carlton, 1985, Ferreira *et al.*, 2008). Soares *et al.* (2011, 2012) recorded *Butis koilomatodon* and *Omobranchus punctatus* in tide pools on the Amazon coast. Macieira *et al.* (2012) previously recorded *B. koilomadon* in the Brazilian state of Espírito Santo, while *O. punctatus* has been recorded in the states of Bahia, Rio de Janeiro,

and Santa Catarina (Soares *et al.*, 2011). *Pterois volitans* (Figure 3F) is an Indo-Pacific species invasive in the Atlantic, which can cause serious damage to the native fauna of South America, including to species with commercial value, such as snapper and other species associated with coral reefs (Bumbeer *et al.*, 2018, Andradi-Brown, 2019).

Acknowledgments

We thank Projeto Áreas Marinhas e Costeiras Protegidas - GEF Mar of the Federal Government, responsible for supporting the collection of the specimens examined. APM is grateful for the Programa de Capacitação Institucional (MCTIC/CNPq, Process 444338/2018-7 and 300675/2019-4), RAC is grateful to FAPESP (Project DEEP OCEAN, Process 17/12909-4). We thank Ross Robertson (Smithsonian Tropical Research Institute), Fabio Di Dario (Universidade Federal do Rio de Janeiro) and Fernando Zaniolo Gibran (Universidade Federal do ABC) for revising the text, Ross Robertson also for revising the species list. We also thank to Fabíola Seabra e Tommaso Giarrizzo (UFPA), Luiz A. Rocha (CAS), Rodrigo Leão de Moura (UFRJ), Ronaldo Francini-Filho (USP) by records and data of personal collections used in the elaboration of the species list.

References

- AMARAL, A. C. & JABLONSKI, S. 2005. Conservação da biodiversidade marinha e costeira do Brasil. *Megadiversidade* 1 (1): 43-51.
- ANDRADI-BROWN, D. A. 2019. Invasive Lionfish (*Pterois volitans* and *P. miles*): Distribution, Impact, and Management. Springer Nature Switzerland <https://doi.org/10.1007/978-3-319-92735-0_48>
- ASANO-FILHO, M. 2004. A pesca de atum na costa Norte de Brasil: novas perspectivas. Brasil, Fortaleza, 72 p.
- ASANO-FILHO, M. 2005. Recursos pesqueiros de grandes profundidades na costa Norte do Brasil. Belém, 86p.

- BRIGGS, J. C. & BERRY, F. W. 1959. The Draconettidae a review of the family with the description of a new species. *Copeia*, 1959(2): 123-133.
- BUMBEER, J., ROCHA, R. M., BORNATOWSKI, H., ROBERT, M. C. & AINSWORTH, C. 2018. Predicting impacts of lionfish (*Pterois volitans*) invasion in a coastal ecosystem of southern Brazil. *Biol. Invasions.*, 20: 1257-1274. <<https://doi.org/10.1007/s10530-017-1625-8>>
- CACHIONE, D. A., DRAKE, D. E., KAYEN, R. W., STERNBERG, R. W., KINEKE, G. C. & TATE, G. B. 1995. Measurements in the bottom boundary layer on the Amazon subaqueous delta. *Mar. Geol.*, 122: 235-257.
- CAIRES, R. 2014. Biogeografia dos peixes marinhos do Atlântico Sul ocidental: padrões e processos. *Arq. Zool.*, 45: 5-24. <<https://doi.org/10.11606/issn.2176-7793.v45iespp5-24>>
- CAIRES, R., SANTOS, W. C., MACHADO, L., OLIVEIRA, C., CERQUEIRA, N., ROTUNDO, M. & MARCENIUK, A. P. 2019. The Tomkin Weakfish or Pescada Negra, *Cynoscion similis* (Sciaenidae Perciformes), an endemic species of the Amazonas-Orinoco Plume. *Acta Amazon.*, 49: 197-209.
- CARLTON, J. T. 1985. Transoceanic and interoceanic dispersal of coastal marine organisms: the biology of ballast water. *Oceanogr. Mar. Biol.*, 23: 313-317.
- CERVIGÓN, F., CIPRIANI, R., FISCHER, W., GARIBALDI, L., HENDRICKX, M., LEMUS, A. J., MÁRQUEZ, R., POUTIERS, J. M., ROBAINA, G. & RODRÍGUEZ, B. 1992. Guía de campo de las especies comerciales marinas y de aguas salobres de la costa septentrional de Sur America. Roma: Organización de las Naciones Unidas para la Agricultura y la Alimentación, 595p.
- CHAO, N. L., CARVALHO-FILHO, A., & SANTOS, J. D. A. 2021. Five new species of Western Atlantic stardrums, *Stellifer* (Perciformes: Sciaenidae) with a key to Atlantic *Stellifer* species. *Zootaxa*, 4991(3): 434-466.
- COLLETTE, B. & RUTZLER, K. 1977. Reef fishes over sponge bottoms off the mouth of the Amazon River. *Proc. Third. Int. Coral Reef Symp.*, 1: 305-310.
- CORDEIRO, R. T., NEVES, B. M., ROSA-FILHO, J. S. & PREZ, C. D. 2015. Mesophotic coral ecosystems occur offshore and north of the Amazon River. *Bull. Mar. Sci.*, 91: 491-510.
- CORREA, A. B. & MARTINELLI, J. M. 2009. Composição da população do camarão rosa *Farfantepenaeus subtilis* (Prez-Farfante 1967) no estuário do rio Curu, Par, Brasil. *Ver. Cienc., UFPA* 7: 1-18.
- COSTA, E. A. & FIGUEIREDO, A. G. 1998. Echo-character and sedimentary processes on the Amazon continental shelf. *An. Acad. Bras. Cienc.*, 70 (2): 187-200.
- COUTINHO, P. N. 1996. Levantamento do estado da arte da pesquisa dos recursos vivos marinhos no Brasil - Oceanografia Geológica Programa REVIZEE. FEMAR/SECIRM.
- COUTO, E. C., SILVEIRA, F. L. & ROCHA, G. R. 2003. Marine biodiversity in Brazil: the current status/ Biodiversidad marina en Brasil: estado actual del conocimiento. *Gayana*, 67 (2): 327-340.
- CURTRIN, T. B. 1986. Physical observation in the plume region of the Amazon River during peak discharge - II. Water masses. *Cont. Shelf Resh.*, 6 (1-2): 5371.
- DAWSON, C. E. 1982. Atlantic sand stargazers (Pisces: Dactyloscopidae), with descriptions of one new genus and seven new species. *Bull. Mar. Sci.*, 32 (1): 14-85.
- DEGENS, E. T., KEMPE, S. & RICHEY, J. E. 1991. Biogeochemistry of Major World Rivers. Scope 42. John Willey & Sons. Chichester, 356p.
- DITTMAR, T. 1999. Outwelling of Organic Matter and Nutrients from a mangrove in North Brazil: Evidence from Organic Tracers and Flux Measurements. *ZMT Contrib*, 5: 1-229.
- EKAU, W. & KNOPPERS, B. 1999. An introduction to the pelagic system of the North-East and East Brazilian shelf. *Arch. Fish. Mar. Res.*, 47(2-3): 113-132.
- ESCHMEYER, W. N. 1965. Western Atlantic scorpionfishes of the genus *Scorpaena*, including four new species. *Bull. Mar. Sci.*, 15 (1): 84-164.

- ESKINAZI, A. M. & LIMA, H. H. 1968. Peixes marinhos do norte e nordeste do Brasil coletados pelo Akaroa, Canopus e N. Oc. Almirante Saldanha. Arq. Est. Bio. Mar., 8(2): 163-172.
- ESPÍRITO-SANTO, R. V. & ISAAC, V. J. 2005. Peixes e camarões do litoral Bragantino, Pará, Brasil. Belém. MADAM. 268 p.
- FERREIRA, C. E., JUNQUEIRA, A. O., VILLAC, M. C. & LOPES, R. M. 2008. Marine Bioinvasions in the Brazilian Coast: Brief Report on History of Events, Vectors, Ecology, Impacts and Management of Non-indigenous Species Biological Invasions in Marine Ecosystems. In: RILOV, G., CROOKS, J. A. (Eds) Biological Invasions in Marine Ecosystems. Springer-Verlag, Berlin, 459-478 pp.
- FLORIANI, D. C., FUKUDA, J. C. & PINTO, E. F. 2004. Parque Nacional dos Lençóis Maranhenses: o maior campo de dunas costeiras da América do Sul. Rev. Gerenc. Cos. Integr., 1: 62-64.
- FONSECA, A.F. & SOUZA, R.A.L. 2006. Caracterização ecológica de algumas espécies da fauna acompanhante do camarão capturado com puçá de arrasto na zona estuarina do rio Taperaçu (Bragança-Pará-Brasil). Boletim Técnico Científico do CEPNOR, 6: 33-45.
- FRANCINI-FILHO, R. B., ASP, N. E., SIEGLE, E., HOCEVAR, J., LOWYCK, K., VASCONCELOS, A. A., BAITELO, R., REZENDE, C. E., OMACHI, C. Y., THOMPSON, C. C. & THOMPSON, F. L. 2018. Perspectives on the great Amazon reef: Extension, biodiversity, and threats. Front. Mar. Sci., 5(142): 1-5. <<https://doi.org/10.3389/fmars.2018.00142>>
- FRICKE, R., ESCHMEYER, W. N. & VAN DER LAAN, R. 2019. Eschmeyer's catalog of fishes: genera, species, references [Internet. California Academy of Science URL: <<http://researcharchive.calacademy.org/research/ichthyology/catalog/fishcatmain.asp>>.
- GAITHER, M. R., BOWEN, B. W., ROCHA, L. A. & BRIGGS, J. C. 2016. Fishes that rule the world: circumtropical distributions revisited. Fish. Fish., 17 (3): 664-679.
- GRODSKY, S. A., REVERDIN, G., CARTON, J. A. & COLES, V. J. 2014. Year-to-year salinity changes in the Amazon plume: Contrasting 2011 and 2012 Aquarius/SACD and SMOS satellite data. Remote Sens Environ., 140: 12-22.
- HU, C., MONTGOMERY, E. T., SCHMITT, R. W. & MULLER-KARGER, F. E. 2004. The dispersal of the Amazon and Orinoco River water in the tropical Atlantic and Caribbean Sea. Observation from space and S-PALACE floats. Deep Sea Res., 51: 1151-1427.
- ICMBio - INSTITUTO CHICO MENDES DE CONSERVAÇÃO DA BIODIVERSIDADE. 2018. Livro Vermelho da Fauna Brasileira Ameaçada de Extinção: Volume I, 1a. Ed., Brasília, DF, 492 p.
- ISAAC-NAHUM, V. J. 2006. Exploração e manejo dos recursos pesqueiros do litoral Amazônico: um desafio para o futuro. Ciência e Cultura, 58(3): 33-36.
- ISAAC, V. J. & BARTHEM, R. B. 1995. Os recursos pesqueiros da Amazônia brasileira. Bol. Mus. Paraense Emílio Goeldi, serie Antropologia, 11 (2): 295-339.
- IWAMOTO, T. & ARAI, T. 1987. A new grenadier *Malacocephalus okamurai* (Pisces: Gadiformes: Macrouridae) from the western Atlantic. Copeia, 1987 (1): 204-208.
- KLAUTAU, A. G., CINTRA, I. H., ROTUNDO, M. M., CARVALHO-FILHO, A., CAIRES, R. & MARCENIUK, A. P. 2020. The deep sea teleost fish fauna of the Brazilian North Coast. Neo. Ichth., 18: e200030.
- KOWSMANN, R. O. & COSTA, M. A. 1979. A sedimentação quaternária na margem continental brasileira e das áreas oceânicas adjacentes. REMAC 8: 7-51.
- LANA, P. C., CAMARGO, M. G., BROGIM, R. A. & ISSAC, V. J. 1996. O bentos da costa brasileira. Avaliação crítica e levantamento bibliográfico (1858-1996). Rio de Janeiro: MMA/CIRM/FEEMA, 431p .
- LEOPOLD M. 2004. Guide des poissons de mer de Guyane , ed. Ifremer, 214p.
- LUCENA, F. M. & ASANO-FILHO, M. 2006. Recursos pesqueiros da região norte . In: JABLONSKI, S., ROSSI-WONGTSCHOWSKI, C. L. D. B., HAIMOVICI, M., LESSA, R. P., MARTINS, A., ÁVILA, R. & FRÉDOU, F. L, (Org) Programa REVIZEE - Relatório Execu-

- tivo. 1ª ed. Brasil, Ministério do Meio Ambiente 1: 121-152.
- MACIEIRA, R. M., GIARRIZZO, T., GASPARINI, J. L. & SAZIMA, I. 2012. Geographic expansion of the invasive mud sleeper *Butis koilomatodon* (Perciformes: Eleotridae) in the western Atlantic Ocean. *J. Fish Biol.*, 81: 308-313.
- MARCENIUK, A. P., CAIRES, R. A., WOSIACKI, W. B. & DARIO, F. 2013. Conhecimento e conservação dos peixes marinhos e estuarinos (Chondrichthyes e Teleostei) da costa norte do Brasil. *Biota Neotrop.*, 13 (4): 251-259. <<https://doi.org/10.1590/S1676-06032013000400022>>
- MARCENIUK, A. P., CAIRES, R. A., ROTUNDO, M. M., ALCANTARA, R. A. & WOSIACKI, W. B. 2017. The ichthyofauna (Teleostei) of the rio Caeté estuary, northeast Pará, Brazil, with a species identification key from northern Brazilian coast. *PANAMJAS*, 12 (1): 31-79.
- MARCENIUK, A. P., ROTUNDO, M. M., CAIRES, R. A., CORDEIRO, A. P., WOSIACKI, W. B., OLIVEIRA, O., SOUZA-SERRA, R. R. M., ROMÃO-JÚNIOR, J. G., SANTOS, W. C. R., REIS, T. S., MUNIZ, M. R., CARDOSO, G. S., FERRARI, F., KLAUTAU, A. G. C. M. & MONTAG, L. 2019. The bony fishes (Teleostei) caught by industrial trawlers off the Brazilian North coast, with insights into its conservation. *Neotrop. Ichthyol.*, 17: 1-28.
- MARTINS, L. R., COUTINHO, P. N. & URIEN, C. M. 1979. The Brazilian continental margin. *Mem. Sem. Ecol. Bentn. Sediment. Plataform. Cont. Atl. Sur.*, Montevideo 1: 5-28.
- MENEZES, N. A., BUCKUP, P. A., FIGUEIREDO, J. L. & MOURA, R. L. 2003. Catálogo das espécies de peixes marinhos do Brasil. São Paulo. Museu de Zoologia. USP. 160 p.
- MILLIMAN, J. D. & MEADE, R. H. 1983. World-wide delivery of river sediment to the oceans. *J. Geol.*, 91 (1): 1-21. <<https://doi.org/10.1086/628741>>
- MMA - MINISTERIO DO MEIO AMBIENTE. 2002. Avaliação e Áreas Prioritárias para a Conservação da Biodiversidade das Zonas Costeira e Marinha. Biodiversidade Brasileira: Avaliação e Identificação de Áreas Prioritárias para Conservação, Utilização Sustentável e Repartição de Benefícios da Biodiversidade Brasileira. Série Biodiversidade 5: 1-404.
- MMA - MINISTERIO DO MEIO AMBIENTE. 2006. Programa REVIZEE: avaliação do potencial sustentável de recursos vivos na zona econômica exclusiva. Relatório Executivo. Ministério do Meio Ambiente, Brasília – DF, 303 p.
- MMA - MINISTERIO DO MEIO AMBIENTE. 2007. Áreas Prioritárias para Conservação e Uso Sustentável e Repartição de Benefícios da Biodiversidade Brasileira: Atualização - Portaria MMA nº 09, de 23 de janeiro de 2007. Série Biodiversidade 31: 1-300.
- MOURA, R. L., AMADO-FILHO, G. M., MORAES, F. C., BRASILEIRO, P. S., SALOMON, P. S., MAHIQUES, M. M., BASTOS, A. C., ALMEIDA, M. G., SILVA, J. M., ARAUJO, B. F., BRITO, F. P., RANGEL, T. P., OLIVEIRA, B. C. V., BAHIA, R. G., PARANHOS, R., DIAS, R. J. S., SIEGLE, E., FIGUEIREDO JR, A. G., PEREIRA, R. C., LEAL, C. V., HAJDU, E., ASP, N. E., GREGORACCI, G. B., LEITAO, S., YAGER, P., FRANCINI-FILHO, R. B., FRÔES, A., CAMPEÃO, M., SILVA, B. O., MOREIRA, A. P. B., OLIVEIRA, L., SOARES, A. S. S., ARAUJO, L. S., OLIVEIRA, N., TEIXEIRA, J. B., VALLE, R. A. B., THOMPSON, C. C., REZENDE, C. E. & THOMPSON, F. 2016. An extensive reef system at the Amazon River mouth. *Science Advances*, 2(4): e1501252. <<https://doi.org/10.1126/sciadv.1501252>>
- NELSON, J. S. 2006. *Fishes of the World*. 4th. John Wiley & Sons Inc., New Jersey, 601p.
- NIELSEN, J. G. 1999. A review of the genus *Neobythites* (Pisces: Ophidiidae) in the Atlantic, with three new species. *Bull. Mar. Sci.*, 64(2): 335-372.
- NITTROUER, C. A. & DEMASTER, D. J. 1986. Sedimentary process on the amazon continental shelf: past, present and future research. *Cont. Shelf Res.*, 6: 5-30.
- OLIVEIRA, G. B., ASANO-FILHO, M. & NEGREIRO, J. A. 2004. Prospecção Pesqueira de Recursos Demersais Utilizando Rede de Arrasto para peixes na Zona Econômica Exclusiva da Costa Norte do Brasil. Relatório de Atividades Programa REVIZEE. Ministério

- do Meio Ambiente.
- OLIVEIRA, G. M., BARROS, A. C., EVANGELISTA, J. E. V., SANTOS, A. R. B., HAIMOVICI, M. & FISCHER, L. G. 2007. Prospecções na região Norte. In: HAIMOVICI, M. (Org.). A prospecção pesqueira e abundância de estoques marinhos no Brasil nas décadas de 1960 a 1990: Levantamento de dados e avaliação crítica. Programa REVIZEE. Ministério do Meio Ambiente. Cap. 6: 119-136.
- OLIVEIRA, J. E., NOBREGA, M. F., GARCIA JR., J., SAMPAIO, C. L. S., DI DARIO, F., FISCHER, L. G. & MINCARONE, M. M. 2015. Biodiversidade marinha da bacia Potiguar/ R: Peixes do talude continental. Rio de Janeiro. Museu Nacional.
- PAIVA, M. P. 1981. Recursos pesqueiros marinhos e estuarinos do norte do Brasil. Brasília, DF. SUDEPE. 127p.
- RICHARDSON, P. L., ARNAULT, S., GARZOLI, S. & BROWN, W. S. 1994. North current retroflection eddies. *J. Geophys. Res.*, 99: 997-1014.
- ROCHA, L. A. & ROSA, I. L. 2001. Baseline assessment of reef fish assemblages of Parcel Manuel Luiz Marine State Park, Maranhão, north-east Brazil. *J. Fish Biol.*, 58: 985-99.
- ROTUNDO, M. M., MACHADO, L., OLIVEIRA, C. & MARCENIUK, A. P. 2019. Record of the rare Caribbean mud eel, *Pythonichthys sanguineus* (Heterenchelyidae, Anguilliformes), in the region of the Amazon Reef. *Acta Amaz.*, 49: 131-138.
- SANYO TECHNO MARINE. 1998. Draft final report for the fishery resources study of the Amazon and Tocantins river mouth areas in the Federative Republic of Brazil. Sanyo Techno Marine Inc.
- SHIMABUKURO, Y. E., DUARTE, V., MOREIRA, M. A., ARAÍ, E., RUDORFF, B. F. T., ANDERSON, L. O., ESPÍRITO-SANTO, F. B., FREITAS, R., AULICINO, L. C. M., MAURANO, L. E. P. & ARAGÃO, J. R. L. 2005. Detecção de áreas desflorestadas em tempo real: conceitos básicos, desenvolvimento e aplicação do Projeto DETER. INPE. Ministério da Ciência e Tecnologia. 63 p.
- SOARES, B. E., RAIOL, D. O. & MONTAG, L. F. 2011. Occurrence of the non-native blenny *Omobranchus punctatus* (Valenciennes, 1836) (Perciformes: Blenniidae) in the Amazon coastal zone, Brazil. *Aqua. Inva.*, 6(1): 39-43.
- SOARES, B. E., RUFFEIL, T. O. B. & MONTAG, L. F. de A. 2012. Occurrence of the non-native sleeper *Butis koilomatodon* (Bleeker, 1849) (Perciformes: Eleotridae) in the Amazon coastal zone, Brazil. *BioInv. Rec.*, 1(2).
- SUDENE 1976. Pesquisas dos Recursos pesqueiros da Plataforma Continental Maranhense. Prospecção Realizada Mediante Convênio Firmado entre a Superintendência do Desenvolvimento do Nordeste, SUDENE e o Governo do Estado do Maranhão. Ministério do Interior, Superintendência do Desenvolvimento do Nordeste, Departamento de Recursos Naturais, Divisão de Recursos Pesqueiros.
- TEIXEIRA, C. & GAETA, S. A. 1991. Contribution of picoplankton to primary production in estuarine, coastal and equatorial Waters of Brazil. *Hydrobiology*, 209: 1-17.
- UENO, F., EVANGELISTA, J. E. & BAILON, M. A. 1978. Sumário das explorações com arrasto de fundo ao largo da costa do Estado do Pará e Território do Amapá. Programa de Pesquisa e Desenvolvimento Pesqueiro do Brasil.
- UYENO, T., MATSUURA, K. & FUJII, E. 1983. Fishes trawled off Suriname and French Guiana. Tokyo. Japan Marine Fishery Resource Research Center.
- WOODS, L. P. 1961. A new berycoid fish from Brazil (family Trachichthyidae. *Field. Zool.*, 39 (45): 525-531.
- ZACARDI, D. M. & BITTENCOURT, S. C. S. 2017. Caracterização morfológica de larvas de peixes capturadas no complexo estuarino dos rios Pará e Paracaurí (estado do Pará - Brasil). *Acta Fish* 5(2): 78-102.